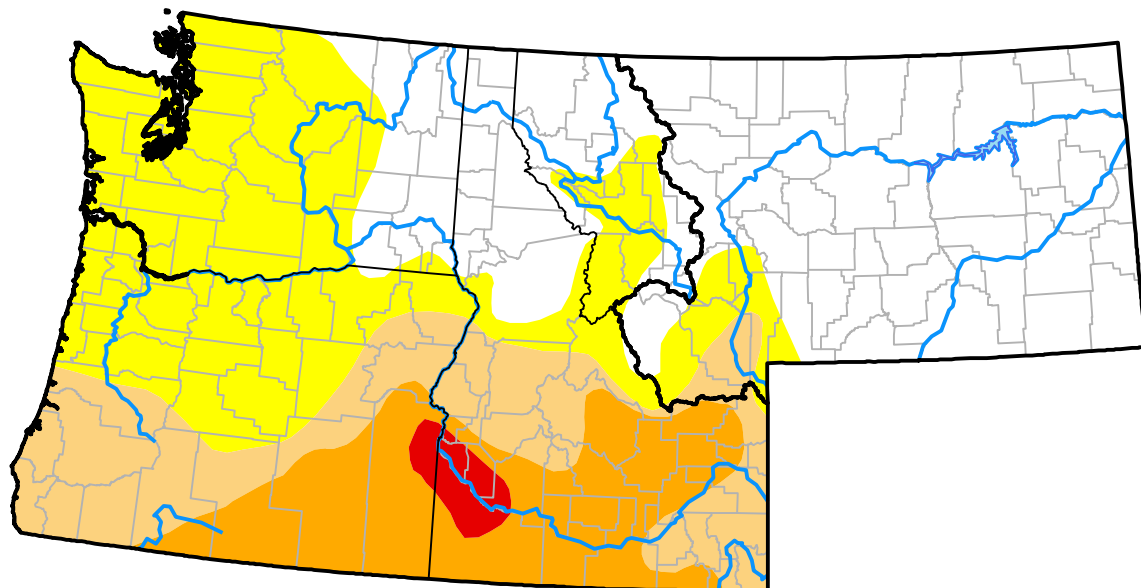


Northwest RDEWS and Surrounding Areas

Drought Conditions (Percent Area)

	None	D0-D4	D1-D4	D2-D4	D3-D4	D4
Current	40.98	59.02	30.21	14.91	1.40	0.00
Last Week <i>12-12-2013</i>	48.79	51.21	25.14	14.91	1.40	0.00
3 Months Ago <i>09-19-2013</i>	41.60	58.40	41.89	23.46	4.42	0.00
Start of Calendar Year <i>01-03-2013</i>	60.51	39.49	29.29	8.33	2.57	0.00
Start of Water Year <i>10-03-2013</i>	59.41	40.59	27.84	15.74	1.40	0.00
One Year Ago <i>12-20-2012</i>	60.51	39.49	29.29	8.33	2.57	0.00



Intensity:



The Drought Monitor focuses on broad-scale conditions. Local conditions may vary. For more information on the Drought Monitor, go to <https://droughtmonitor.unl.edu/About.aspx>

Author:

Mark Svoboda
National Drought Mitigation Center

