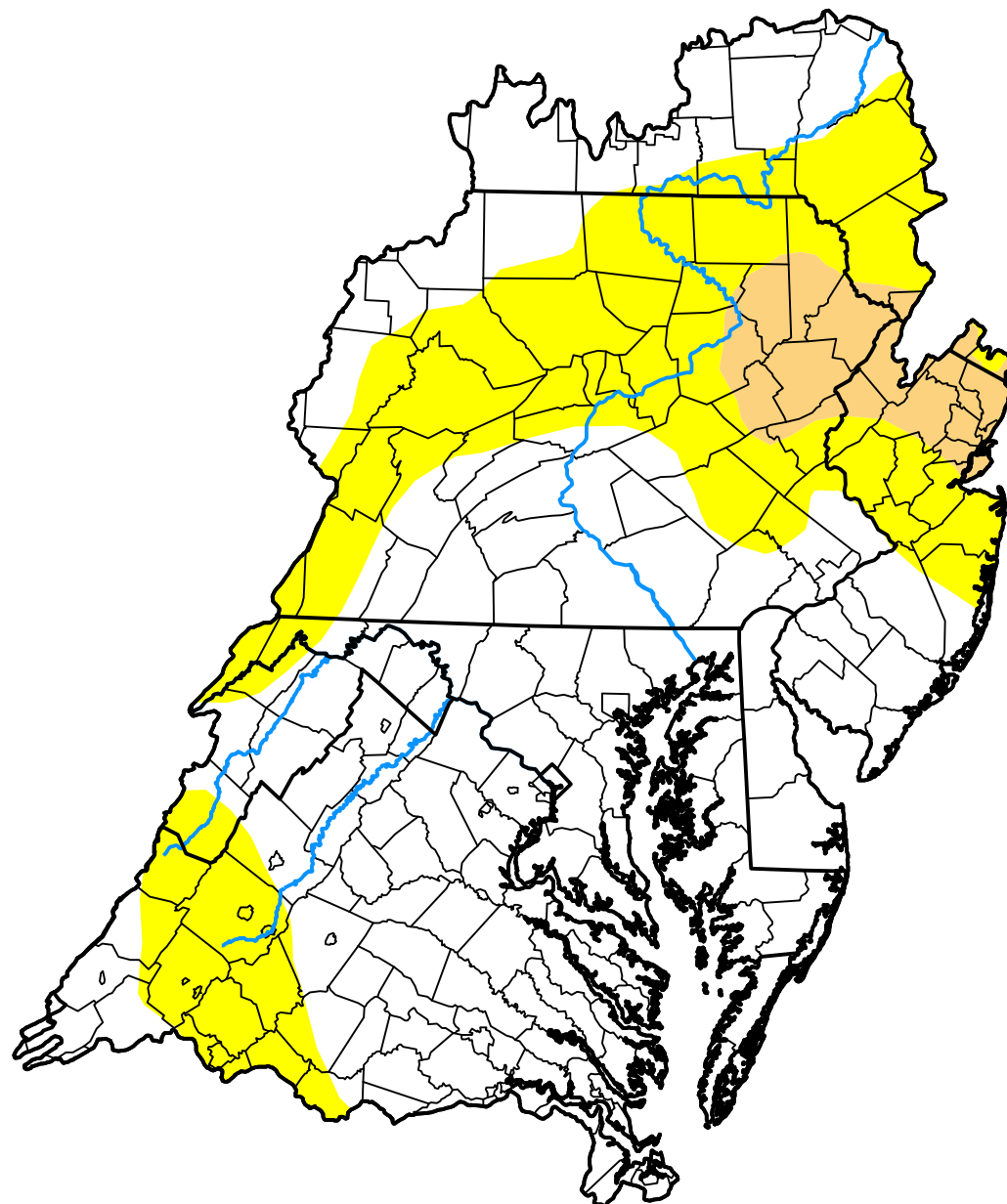


# U.S. Drought Monitor

## Middle Atlantic RFC

**December 17, 2013**  
 (Released Thursday, Dec. 19, 2013)  
 Valid 7 a.m. EST



*Drought Conditions (Percent Area)*

	None	D0	D1	D2	D3	D4
<b>Current</b>	63.76	30.36	5.89	0.00	0.00	0.00
<b>Last Week</b> <i>12-12-2013</i>	56.25	37.86	5.89	0.00	0.00	0.00
<b>3 Months Ago</b> <i>09-19-2013</i>	80.35	19.65	0.00	0.00	0.00	0.00
<b>Start of Calendar Year</b> <i>01-03-2013</i>	85.51	3.77	10.72	0.00	0.00	0.00
<b>Start of Water Year</b> <i>10-03-2013</i>	64.68	35.32	0.00	0.00	0.00	0.00
<b>One Year Ago</b> <i>12-20-2012</i>	83.72	9.97	6.31	0.00	0.00	0.00

*Intensity:*

- None
- D0 Abnormally Dry
- D1 Moderate Drought
- D2 Severe Drought
- D3 Extreme Drought
- D4 Exceptional Drought

*The Drought Monitor focuses on broad-scale conditions. Local conditions may vary. For more information on the Drought Monitor, go to <https://droughtmonitor.unl.edu/About.aspx>*

*Author:*

Mark Svoboda  
 National Drought Mitigation Center

