

U.S. Drought Monitor

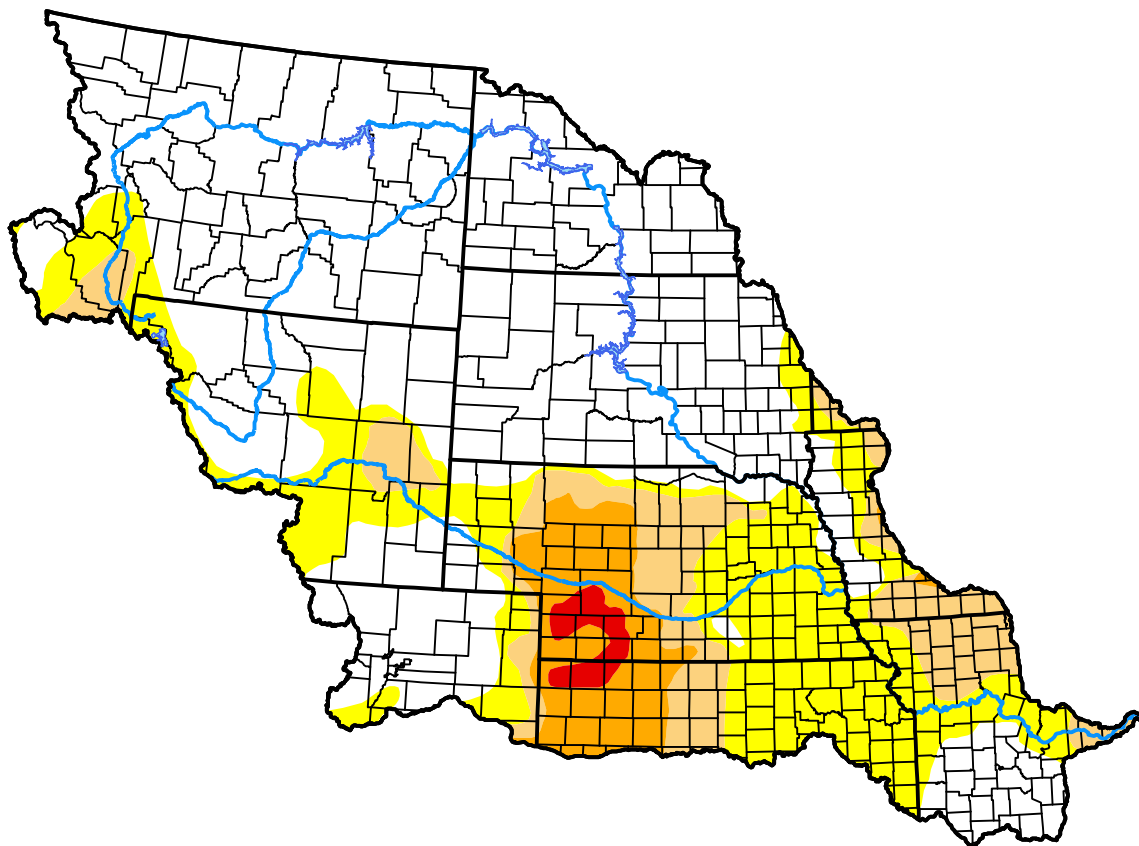
Missouri Basin RFC

December 17, 2013
 (Released Thursday, Dec. 19, 2013)

Valid 7 a.m. EST

Drought Conditions (Percent Area)

	None	D0-D4	D1-D4	D2-D4	D3-D4	D4
Current	62.16	37.84	16.62	6.82	1.06	0.00
Last Week <i>12-12-2013</i>	62.16	37.84	15.91	6.82	1.06	0.00
3 Months Ago <i>09-19-2013</i>	38.87	61.13	39.75	19.06	4.84	0.00
Start of Calendar Year <i>01-03-2013</i>	11.52	88.48	81.86	68.75	45.29	22.09
Start of Water Year <i>10-03-2013</i>	45.68	54.32	33.38	13.74	1.68	0.00
One Year Ago <i>12-20-2012</i>	11.52	88.48	81.86	68.36	45.29	22.09



Intensity:

- None
- D0 Abnormally Dry
- D1 Moderate Drought
- D2 Severe Drought
- D3 Extreme Drought
- D4 Exceptional Drought

The Drought Monitor focuses on broad-scale conditions. Local conditions may vary. For more information on the Drought Monitor, go to <https://droughtmonitor.unl.edu/About.aspx>

Author:

Mark Svoboda
 National Drought Mitigation Center

