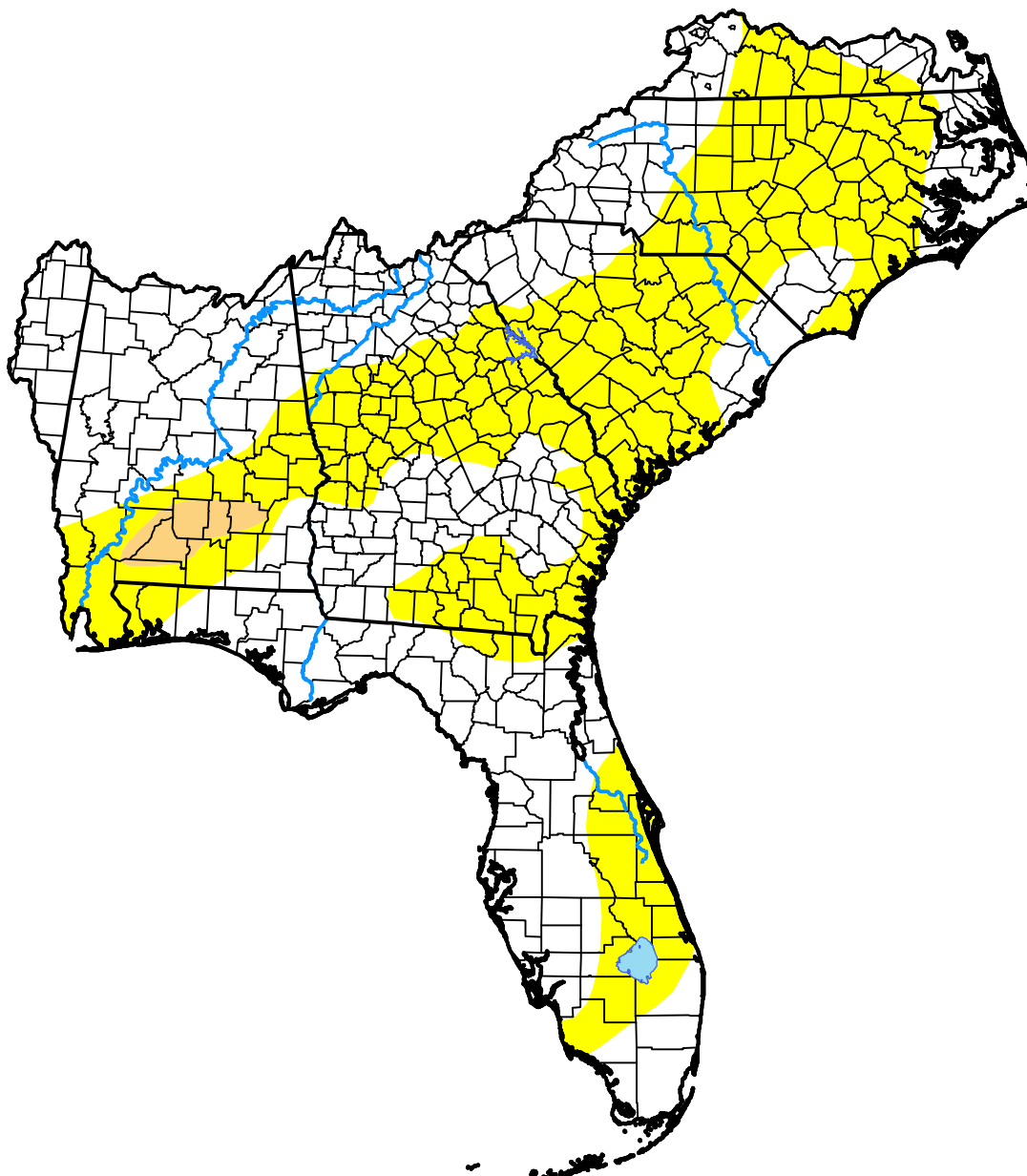


U.S. Drought Monitor Southeast RFC

December 17, 2013
(Released Thursday, Dec. 19, 2013)

Valid 7 a.m. EST



Drought Conditions (Percent Area)

	None	D0-D4	D1-D4	D2-D4	D3-D4	D4
Current	54.76	45.24	1.35	0.00	0.00	0.00
Last Week <i>12-12-2013</i>	55.94	44.06	0.27	0.00	0.00	0.00
3 Months Ago <i>09-19-2013</i>	95.55	4.45	0.99	0.05	0.00	0.00
Start of Calendar Year <i>01-03-2013</i>	27.41	72.59	48.65	23.84	11.06	2.43
Start of Water Year <i>10-03-2013</i>	91.17	8.83	0.06	0.00	0.00	0.00
One Year Ago <i>12-20-2012</i>	25.45	74.55	53.04	26.10	11.41	3.96

Intensity:



The Drought Monitor focuses on broad-scale conditions. Local conditions may vary. For more information on the Drought Monitor, go to <https://droughtmonitor.unl.edu/About.aspx>

Author:

Mark Svoboda
National Drought Mitigation Center



droughtmonitor.unl.edu