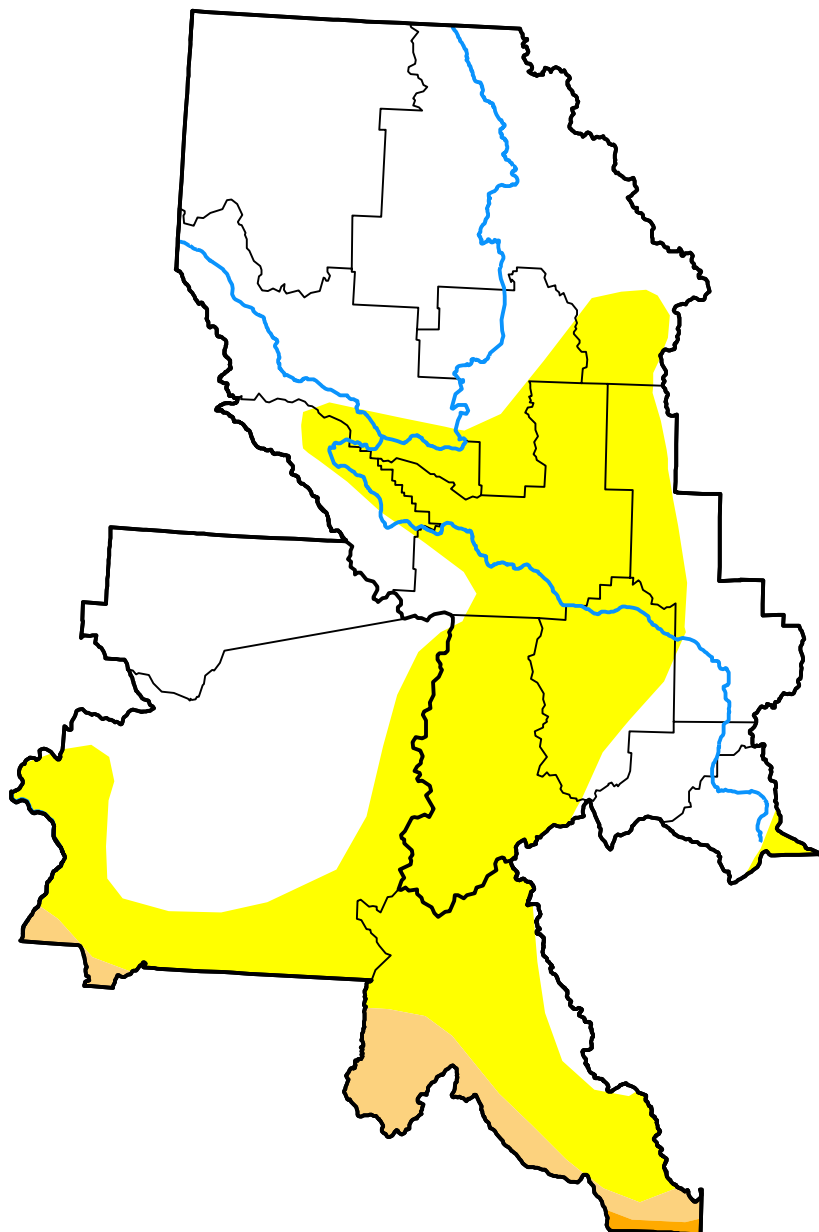


U.S. Drought Monitor

Missoula, MT WFO

December 17, 2013
 (Released Thursday, Dec. 19, 2013)
 Valid 7 a.m. EST



Drought Conditions (Percent Area)

	None	D0-D4	D1-D4	D2-D4	D3-D4	D4
Current	58.41	41.59	3.66	0.23	0.00	0.00
Last Week <i>12-12-2013</i>	58.41	41.59	3.66	0.23	0.00	0.00
3 Months Ago <i>09-19-2013</i>	3.24	96.76	67.22	25.95	0.00	0.00
Start of Calendar Year <i>01-03-2013</i>	90.94	9.06	3.14	0.00	0.00	0.00
Start of Water Year <i>10-03-2013</i>	44.74	55.26	21.43	2.26	0.00	0.00
One Year Ago <i>12-20-2012</i>	90.94	9.06	3.14	0.00	0.00	0.00

Intensity:



The Drought Monitor focuses on broad-scale conditions. Local conditions may vary. For more information on the Drought Monitor, go to <https://droughtmonitor.unl.edu/About.aspx>

Author:

Mark Svoboda
 National Drought Mitigation Center

