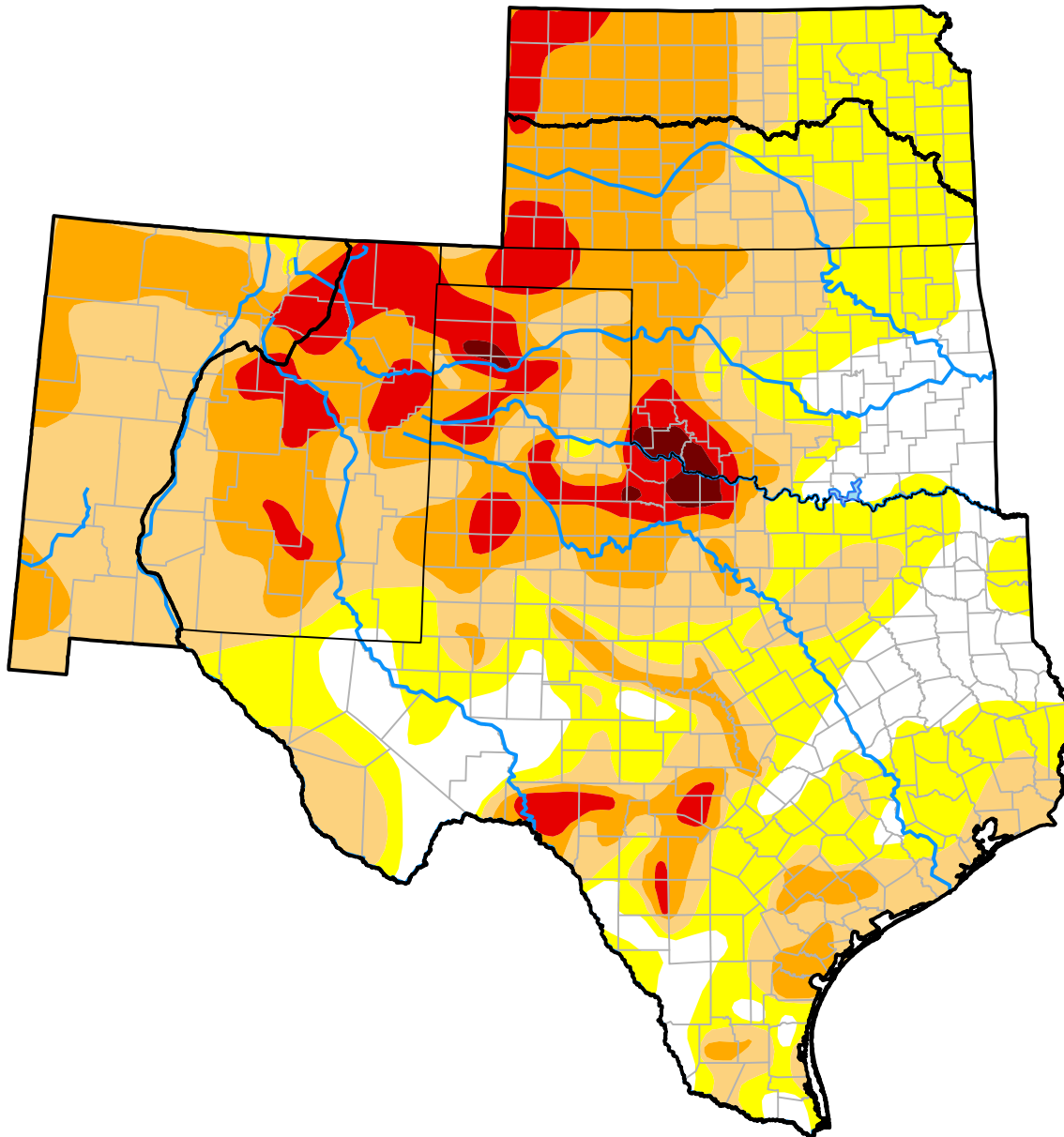


# U.S. Drought Monitor

## Southern Plains RDEWS

**January 28, 2014**  
*(Released Thursday, Jan. 30, 2014)*  
 Valid 7 a.m. EST



*Drought Conditions (Percent Area)*

	None	D0-D4	D1-D4	D2-D4	D3-D4	D4
<b>Current</b>	15.88	84.12	61.41	30.42	9.13	0.82
<b>Last Week</b> <i>01-23-2014</i>	18.99	81.01	53.67	24.27	5.67	0.82
<b>3 Months Ago</b> <i>10-31-2013</i>	16.01	83.99	58.33	25.28	4.05	0.36
<b>Start of Calendar Year</b> <i>01-02-2014</i>	24.42	75.58	51.33	23.89	5.17	0.82
<b>Start of Water Year</b> <i>10-03-2013</i>	7.61	92.39	67.73	27.33	3.90	0.29
<b>One Year Ago</b> <i>01-31-2013</i>	6.08	93.92	85.74	69.70	33.70	10.13

Intensity:



*The Drought Monitor focuses on broad-scale conditions. Local conditions may vary. For more information on the Drought Monitor, go to <https://droughtmonitor.unl.edu/About.aspx>*

Author:

Anthony Artusa  
 NOAA/NWS/NCEP/CPC



**droughtmonitor.unl.edu**