

# U.S. Drought Monitor

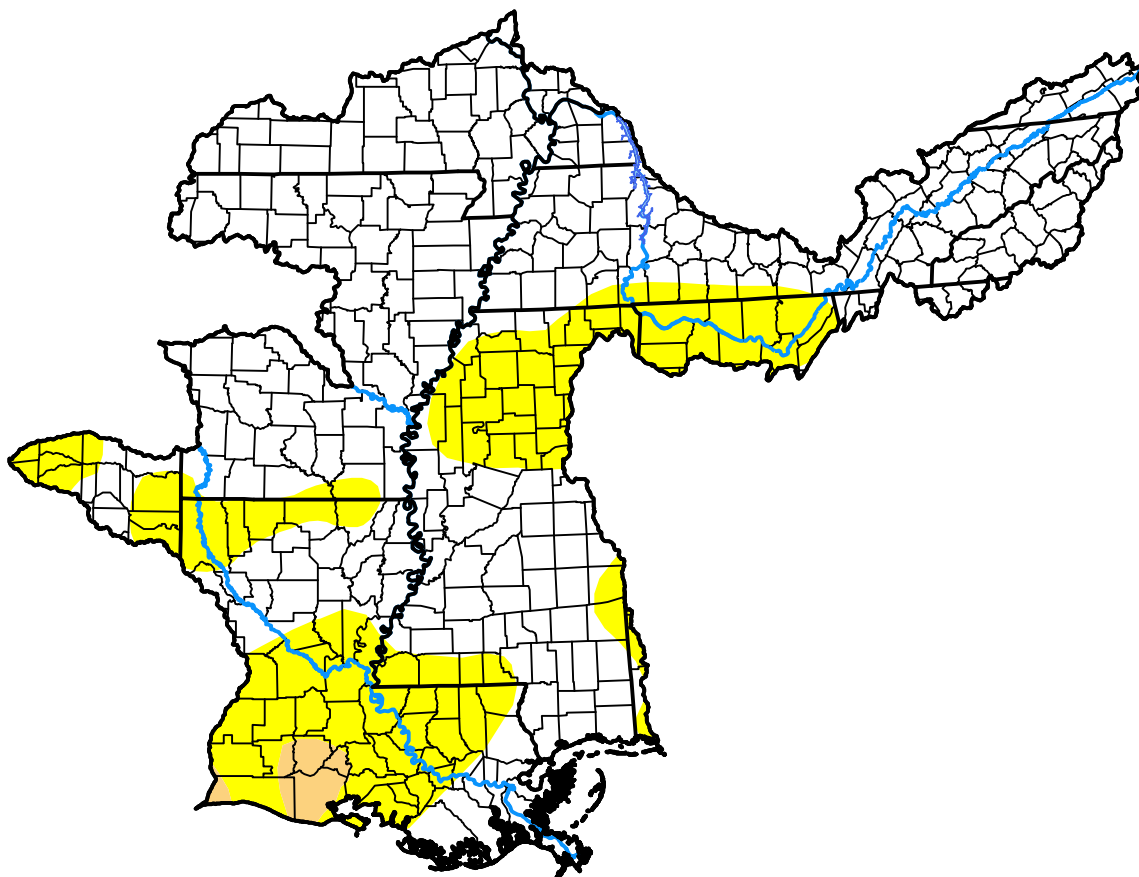
## Lower Mississippi RFC

January 28, 2014  
 (Released Thursday, Jan. 30, 2014)

Valid 7 a.m. EST

Drought Conditions (Percent Area)

	None	D0	D1	D2	D3	D4
<b>Current</b>	72.79	25.83	1.39	0.00	0.00	0.00
<b>Last Week</b> <i>01-23-2014</i>	86.01	12.74	1.25	0.00	0.00	0.00
<b>3 Months Ago</b> <i>10-31-2013</i>	63.20	20.02	15.84	0.94	0.00	0.00
<b>Start of Calendar Year</b> <i>01-02-2014</i>	95.70	4.29	0.01	0.00	0.00	0.00
<b>Start of Water Year</b> <i>10-03-2013</i>	59.55	17.26	15.26	6.44	1.49	0.00
<b>One Year Ago</b> <i>01-31-2013</i>	65.69	21.74	7.87	4.03	0.67	0.00



**Intensity:**



The Drought Monitor focuses on broad-scale conditions. Local conditions may vary. For more information on the Drought Monitor, go to <https://droughtmonitor.unl.edu/About.aspx>

**Author:**

Anthony Artusa  
 NOAA/NWS/NCEP/CPC

