

# U.S. Drought Monitor

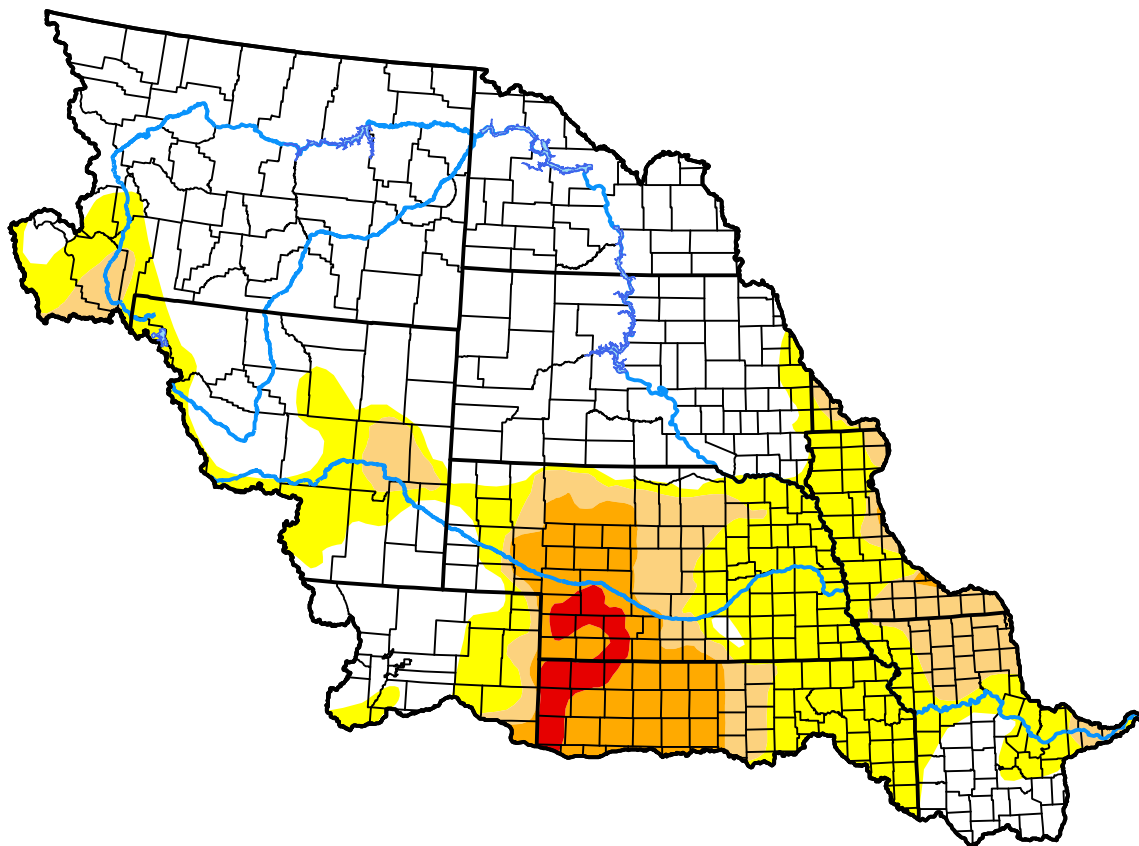
## Missouri Basin RFC

January 28, 2014  
 (Released Thursday, Jan. 30, 2014)

Valid 7 a.m. EST

Drought Conditions (Percent Area)

	None	D0	D1	D2	D3	D4
<b>Current</b>	59.96	22.38	9.55	6.57	1.55	0.00
<b>Last Week</b> <i>01-23-2014</i>	60.83	22.41	9.79	5.57	1.41	0.00
<b>3 Months Ago</b> <i>10-31-2013</i>	62.44	19.75	9.12	7.64	1.06	0.00
<b>Start of Calendar Year</b> <i>01-02-2014</i>	63.00	20.27	9.75	5.57	1.41	0.00
<b>Start of Water Year</b> <i>10-03-2013</i>	45.68	20.93	19.64	12.06	1.68	0.00
<b>One Year Ago</b> <i>01-31-2013</i>	13.33	5.37	11.49	24.54	23.18	22.09



**Intensity:**

- None
- D0 Abnormally Dry
- D1 Moderate Drought
- D2 Severe Drought
- D3 Extreme Drought
- D4 Exceptional Drought

The Drought Monitor focuses on broad-scale conditions. Local conditions may vary. For more information on the Drought Monitor, go to <https://droughtmonitor.unl.edu/About.aspx>

**Author:**

Anthony Artusa  
 NOAA/NWS/NCEP/CPC

