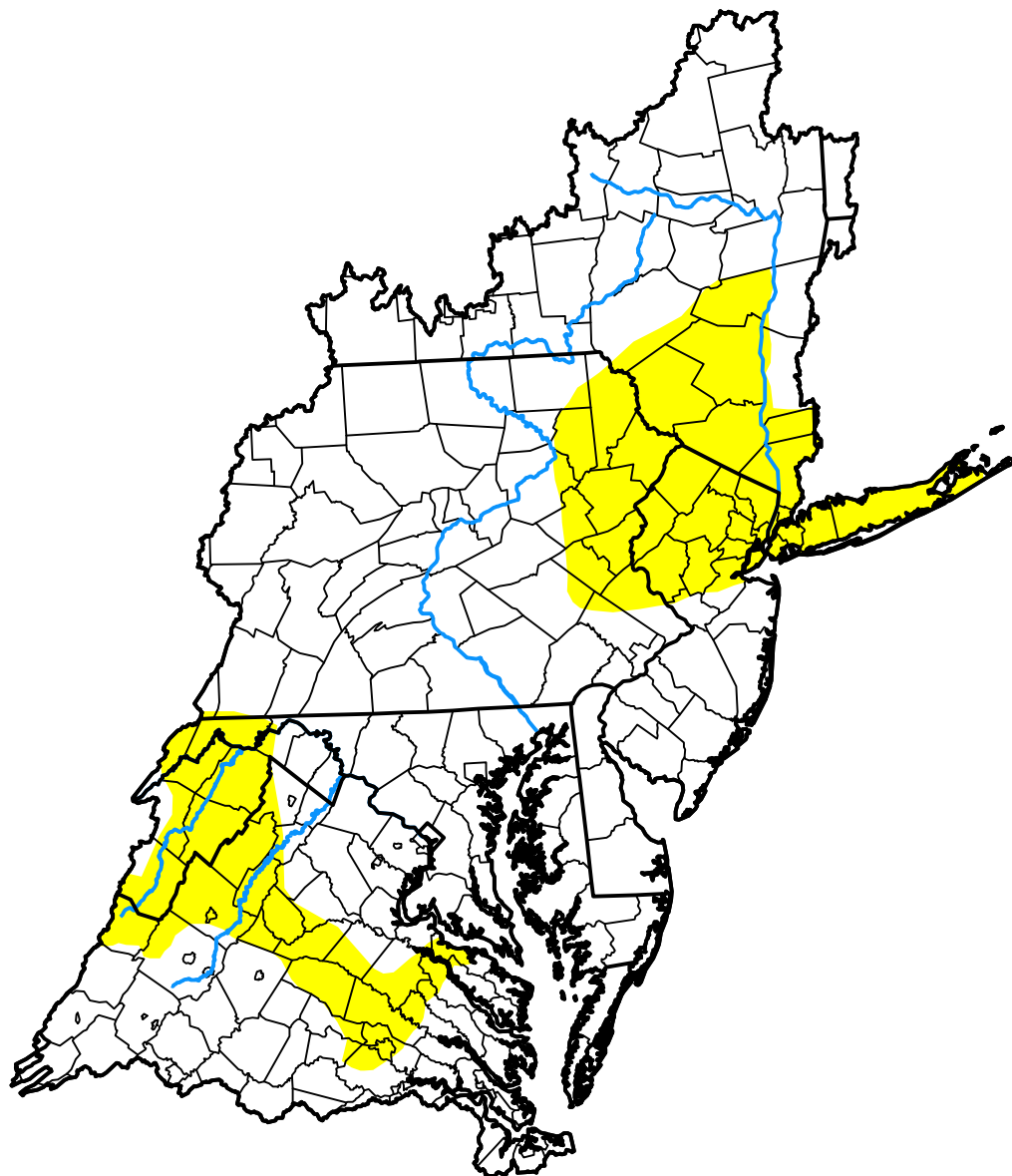


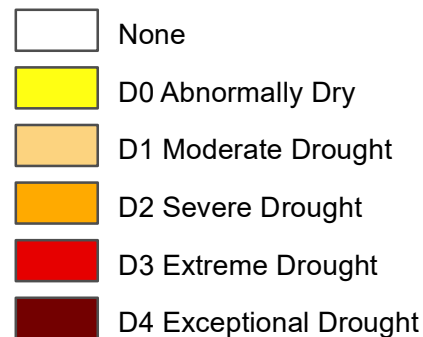
U.S. Drought Monitor

Mid Atlantic Watershed

September 16, 2014
(Released Thursday, Sep. 18, 2014)
Valid 8 a.m. EDT



Intensity:



The Drought Monitor focuses on broad-scale conditions. Local conditions may vary. For more information on the Drought Monitor, go to <https://droughtmonitor.unl.edu/About.aspx>

Author:

Michael Brewer
NCEI/NOAA



droughtmonitor.unl.edu