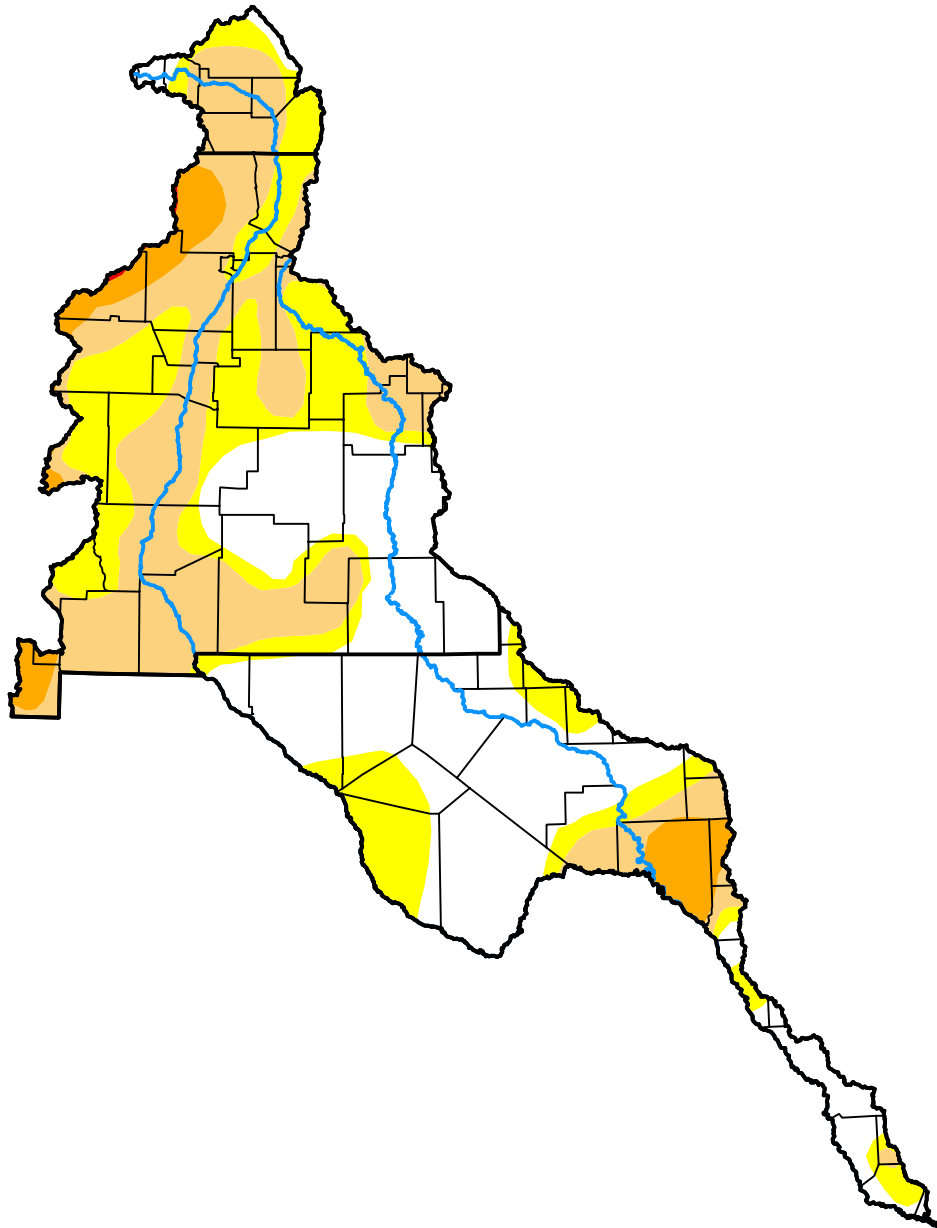


# U.S. Drought Monitor

## Rio Grande Watershed

**October 7, 2014**  
 (Released Thursday, Oct. 9, 2014)  
 Valid 8 a.m. EDT



*Drought Conditions (Percent Area)*

	None	D0	D1	D2	D3	D4
<b>Current</b>	38.97	26.42	28.84	5.68	0.09	0.00
<b>Last Week</b> <i>10-02-2014</i>	38.89	26.32	29.02	5.68	0.09	0.00
<b>3 Months Ago</b> <i>07-10-2014</i>	2.70	22.84	23.52	33.08	17.86	0.00
<b>Start of Calendar Year</b> <i>01-02-2014</i>	14.11	38.35	29.16	15.19	3.18	0.00
<b>Start of Water Year</b> <i>10-02-2014</i>	38.89	26.32	29.02	5.68	0.09	0.00
<b>One Year Ago</b> <i>10-10-2013</i>	12.03	33.20	33.95	17.92	2.86	0.04

***Intensity:***

- None
- D0 Abnormally Dry
- D1 Moderate Drought
- D2 Severe Drought
- D3 Extreme Drought
- D4 Exceptional Drought

*The Drought Monitor focuses on broad-scale conditions. Local conditions may vary. For more information on the Drought Monitor, go to <https://droughtmonitor.unl.edu/About.aspx>*

***Author:***

Mark Svoboda  
 National Drought Mitigation Center



**droughtmonitor.unl.edu**