

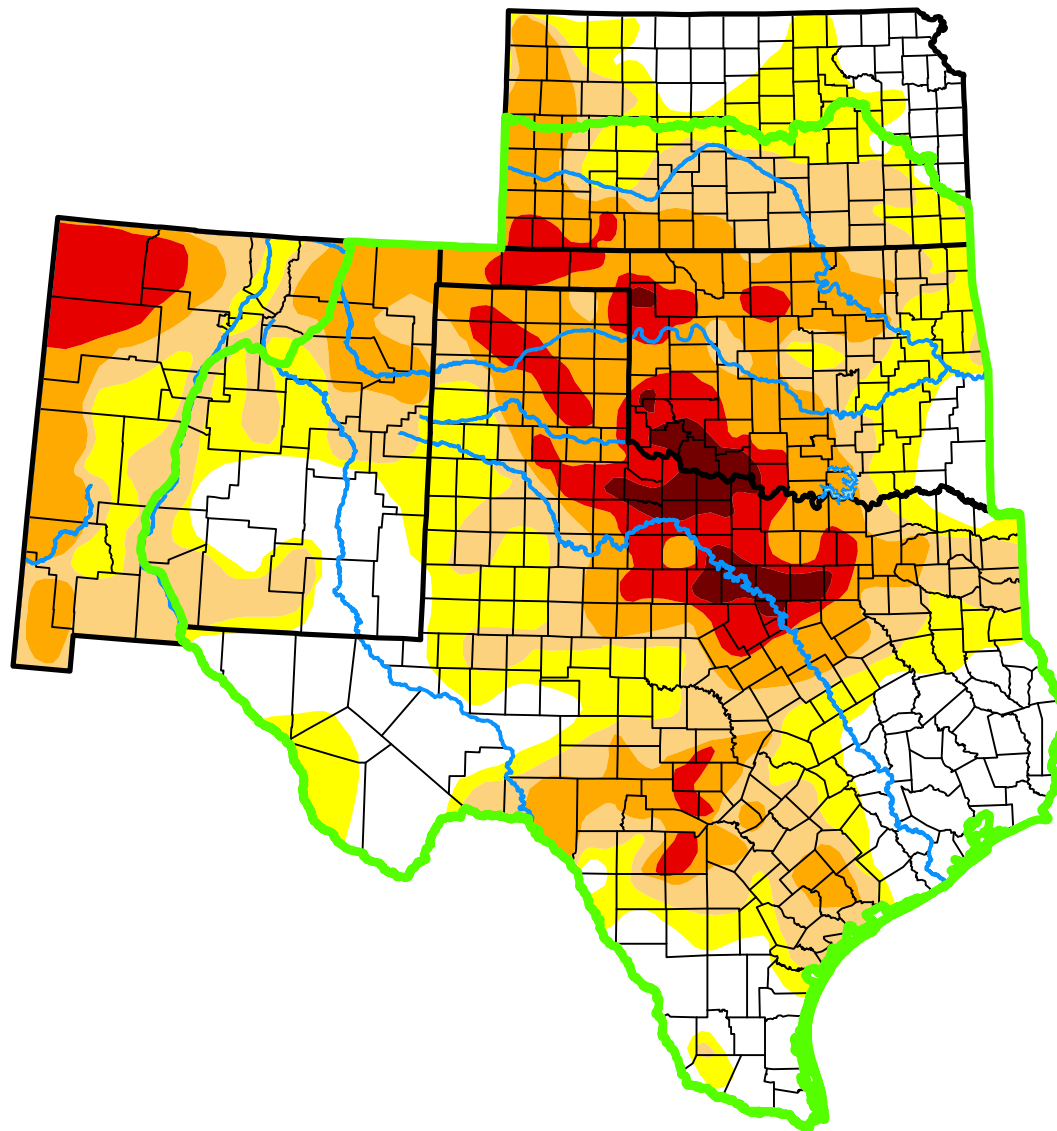
*U.S. Drought Monitor*

# Southern Plains DEWS and Surrounding Areas







**October 7, 2014**

*(Released Thursday, Oct. 9, 2014)*

Valid 8 a.m. EDT



*Intensity:*

-  None
-  D0 Abnormally Dry
-  D1 Moderate Drought
-  D2 Severe Drought
-  D3 Extreme Drought
-  D4 Exceptional Drought

*The Drought Monitor focuses on broad-scale conditions. Local conditions may vary. For more information on the Drought Monitor, go to <https://droughtmonitor.unl.edu/About.aspx>*

*Author:*

Mark Svoboda  
National Drought Mitigation Center



[droughtmonitor.unl.edu](https://droughtmonitor.unl.edu)