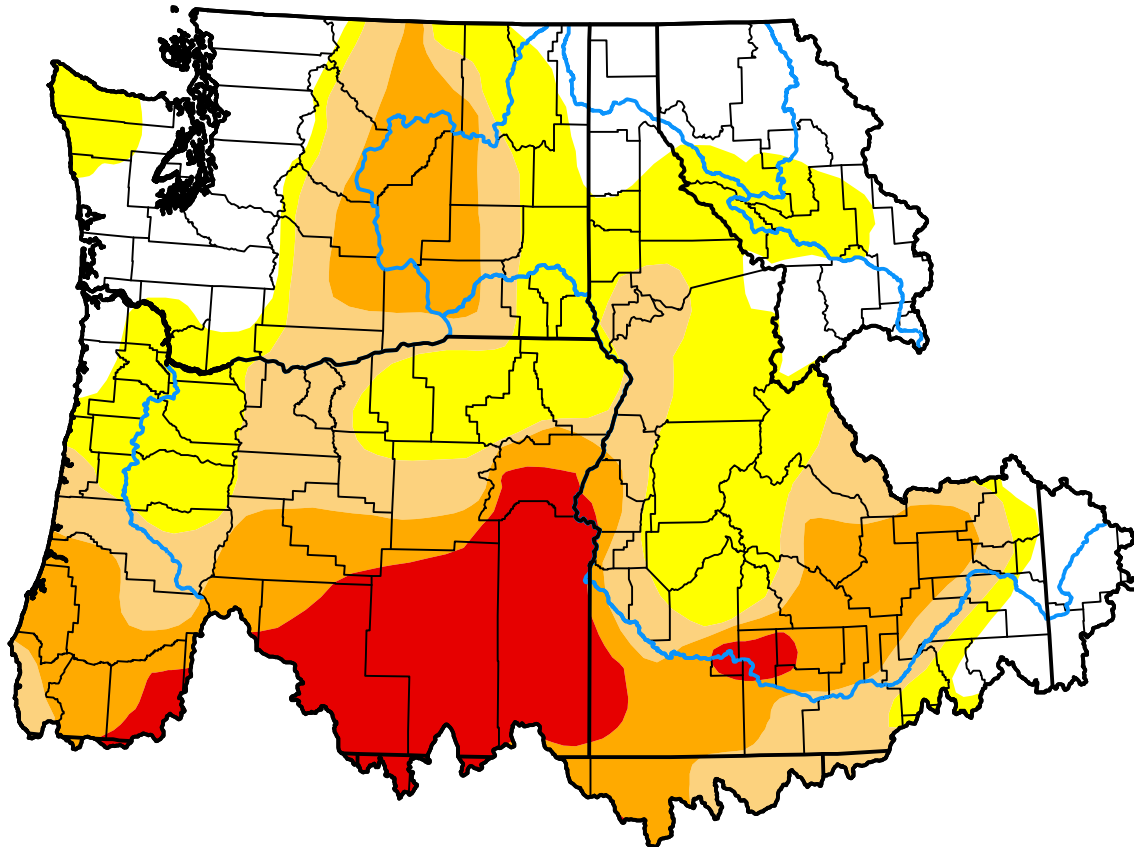


# U.S. Drought Monitor Northwest RFC

**October 7, 2014**  
(Released Thursday, Oct. 9, 2014)  
Valid 8 a.m. EDT

Drought Conditions (Percent Area)

	None	D0	D1	D2	D3	D4
<b>Current</b>	20.90	26.64	20.80	20.06	11.60	0.00
<b>Last Week</b> <i>10-02-2014</i>	20.90	26.67	20.77	20.06	11.60	0.00
<b>3 Months Ago</b> <i>07-10-2014</i>	36.75	17.25	14.73	27.40	3.88	0.00
<b>Start of Calendar Year</b> <i>01-02-2014</i>	16.97	40.64	19.19	20.35	2.85	0.00
<b>Start of Water Year</b> <i>10-02-2014</i>	20.90	26.67	20.77	20.06	11.60	0.00
<b>One Year Ago</b> <i>10-10-2013</i>	50.20	14.17	13.40	20.18	2.05	0.00



**Intensity:**



The Drought Monitor focuses on broad-scale conditions. Local conditions may vary. For more information on the Drought Monitor, go to <https://droughtmonitor.unl.edu/About.aspx>

**Author:**

Mark Svoboda  
National Drought Mitigation Center

