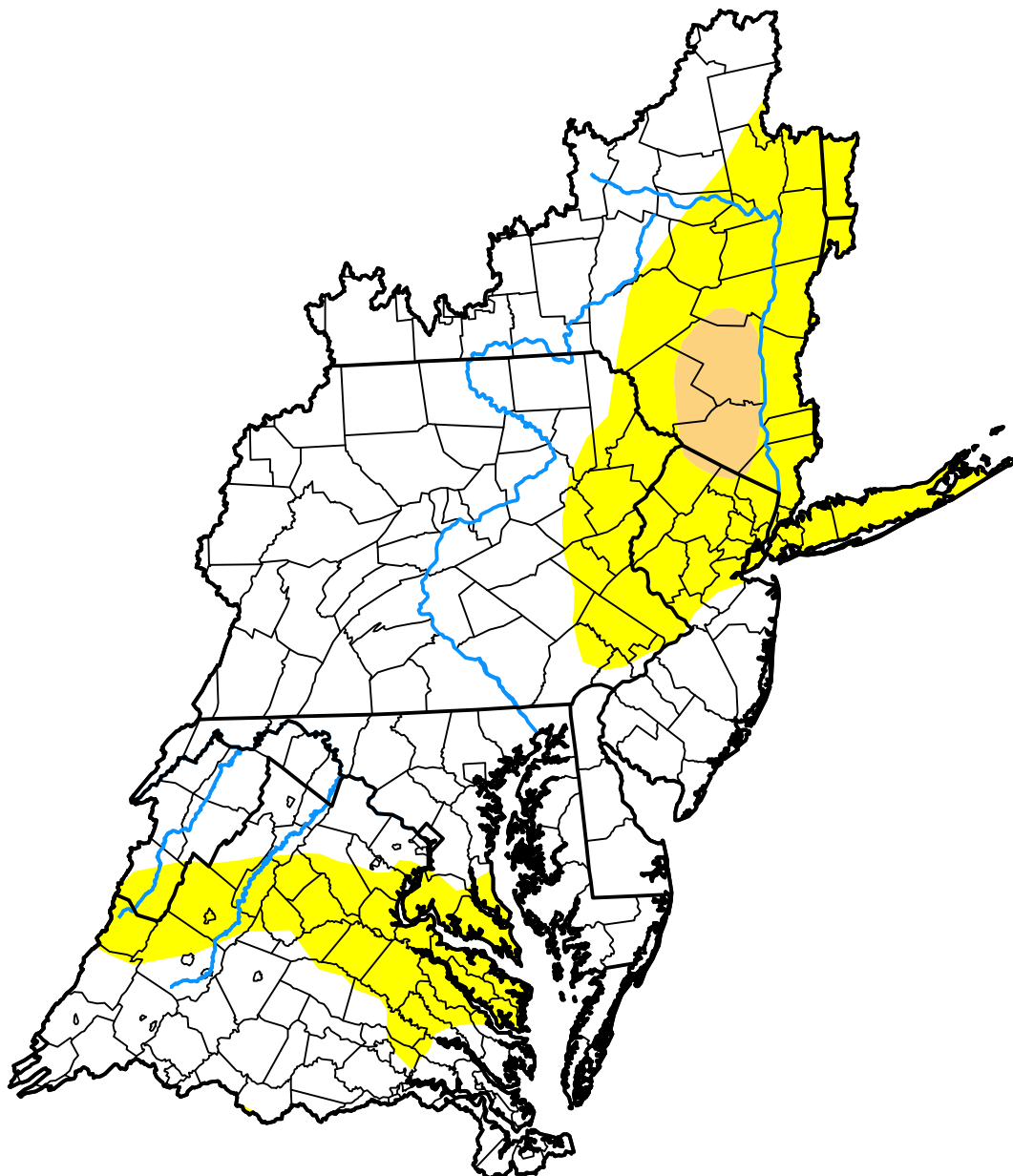


U.S. Drought Monitor

Mid Atlantic Watershed

October 21, 2014
 (Released Thursday, Oct. 23, 2014)
 Valid 8 a.m. EDT



Drought Conditions (Percent Area)

	None	D0	D1	D2	D3	D4
Current	70.18	27.29	2.53	0.00	0.00	0.00
Last Week <i>10-16-2014</i>	50.23	47.23	2.53	0.00	0.00	0.00
3 Months Ago <i>07-24-2014</i>	94.67	5.33	0.00	0.00	0.00	0.00
Start of Calendar Year <i>01-02-2014</i>	66.01	26.82	7.17	0.00	0.00	0.00
Start of Water Year <i>10-02-2014</i>	57.11	40.75	2.14	0.00	0.00	0.00
One Year Ago <i>10-24-2013</i>	80.80	18.16	1.04	0.00	0.00	0.00

Intensity:

- None
- D0 Abnormally Dry
- D1 Moderate Drought
- D2 Severe Drought
- D3 Extreme Drought
- D4 Exceptional Drought

The Drought Monitor focuses on broad-scale conditions. Local conditions may vary. For more information on the Drought Monitor, go to <https://droughtmonitor.unl.edu/About.aspx>

Author:

Michael Brewer
 NCEI/NOAA

