

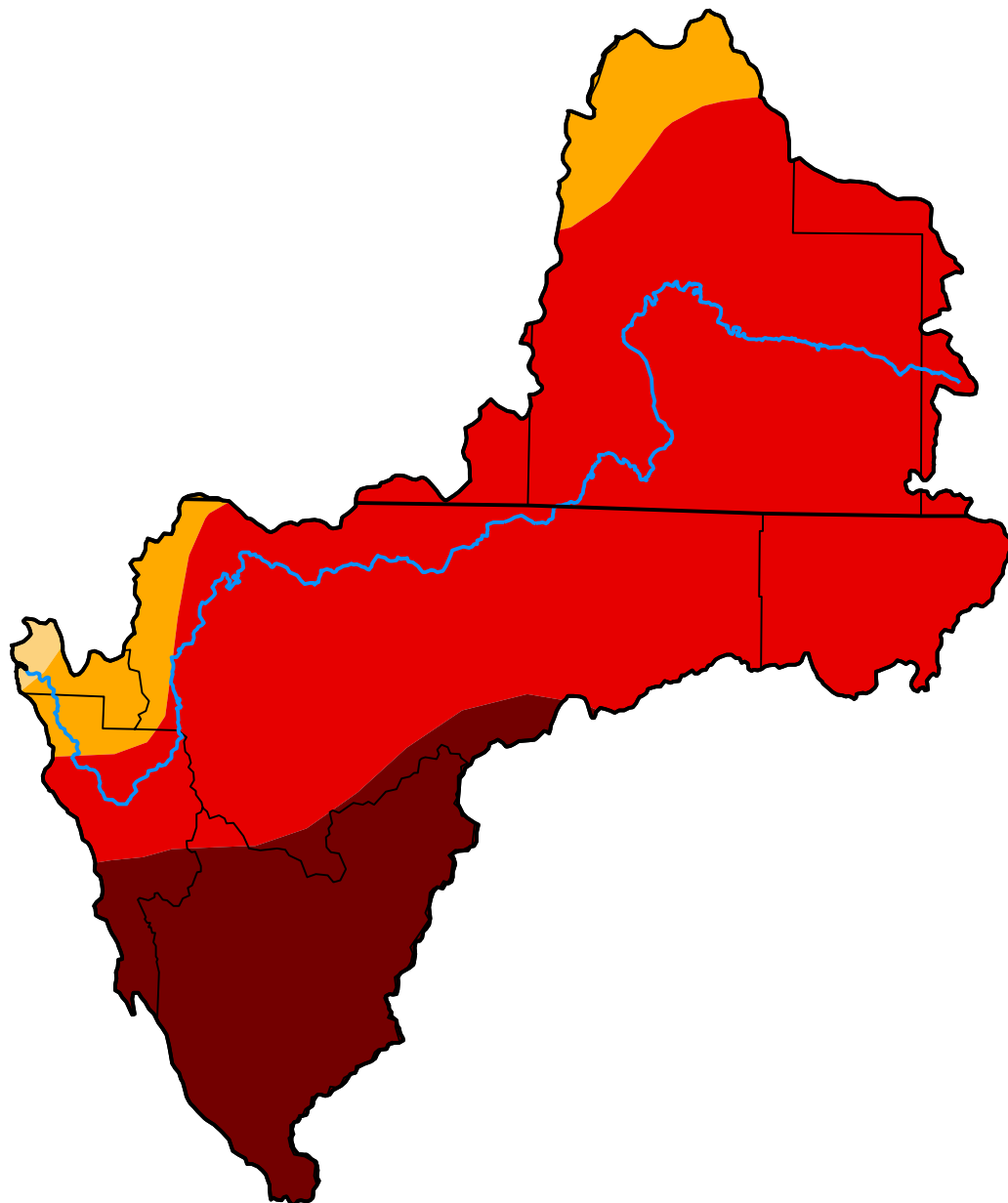
U.S. Drought Monitor Klamath River Basin

October 21, 2014
(Released Thursday, Oct. 23, 2014)

Valid 8 a.m. EDT

Drought Conditions (Percent Area)

	None	D0	D1	D2	D3	D4
Current	0.00	0.00	0.45	8.15	71.48	19.92
Last Week <i>10-14-2014</i>	0.00	0.00	0.45	8.15	71.48	19.92
3 Months Ago <i>07-22-2014</i>	0.00	0.00	0.00	8.68	74.69	16.63
Start of Calendar Year <i>12-31-2013</i>	0.00	0.00	26.85	73.15	0.00	0.00
Start of Water Year <i>09-30-2014</i>	0.00	0.00	0.45	8.15	71.48	19.92
One Year Ago <i>10-22-2013</i>	0.00	11.16	43.96	44.88	0.00	0.00



Intensity:

- None
- D0 Abnormally Dry
- D1 Moderate Drought
- D2 Severe Drought
- D3 Extreme Drought
- D4 Exceptional Drought

The Drought Monitor focuses on broad-scale conditions. Local conditions may vary. For more information on the Drought Monitor, go to <https://droughtmonitor.unl.edu/About.aspx>

Author:

Michael Brewer
NCEI/NOAA



droughtmonitor.unl.edu