

U.S. Drought Monitor

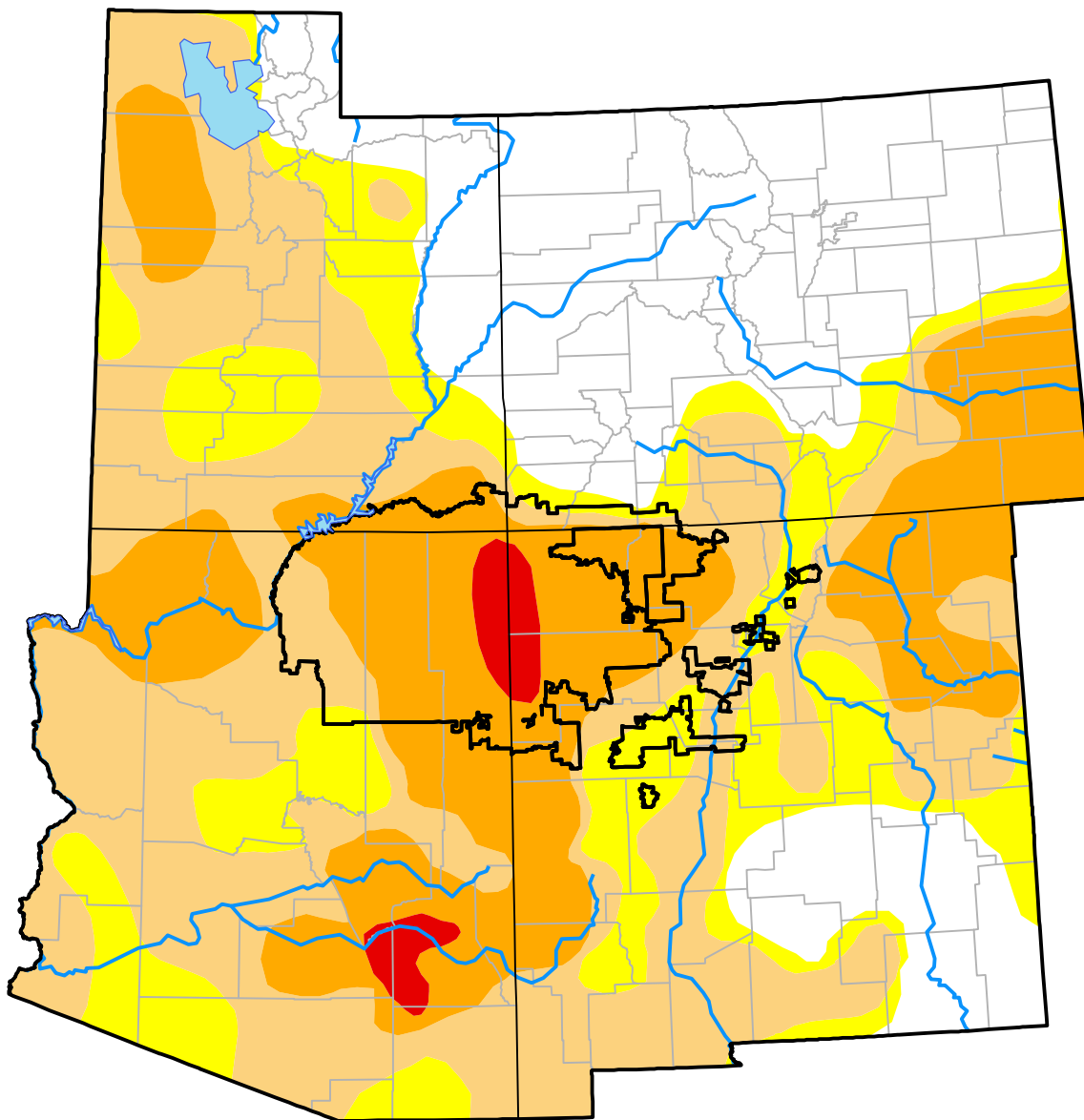
Four Corners RDEWS

October 21, 2014
 (Released Thursday, Oct. 23, 2014)

Valid 8 a.m. EDT

Drought Conditions (Percent Area)

	None	D0-D4	D1-D4	D2-D4	D3-D4	D4
Current	0.00	100.00	93.02	76.26	10.65	0.00
Last Week <i>10-16-2014</i>	0.00	100.00	93.02	76.26	27.43	0.00
3 Months Ago <i>07-24-2014</i>	0.00	100.00	99.60	64.32	31.41	0.00
Start of Calendar Year <i>01-02-2014</i>	7.22	92.78	67.95	21.38	0.00	0.00
Start of Water Year <i>10-02-2014</i>	0.00	100.00	93.35	76.26	27.43	0.00
One Year Ago <i>10-24-2013</i>	4.52	95.48	76.29	42.32	0.00	0.00



Intensity:

- None
- D0 Abnormally Dry
- D1 Moderate Drought
- D2 Severe Drought
- D3 Extreme Drought
- D4 Exceptional Drought

The Drought Monitor focuses on broad-scale conditions. Local conditions may vary. For more information on the Drought Monitor, go to <https://droughtmonitor.unl.edu/About.aspx>

Author:

Michael Brewer
 NCEI/NOAA

