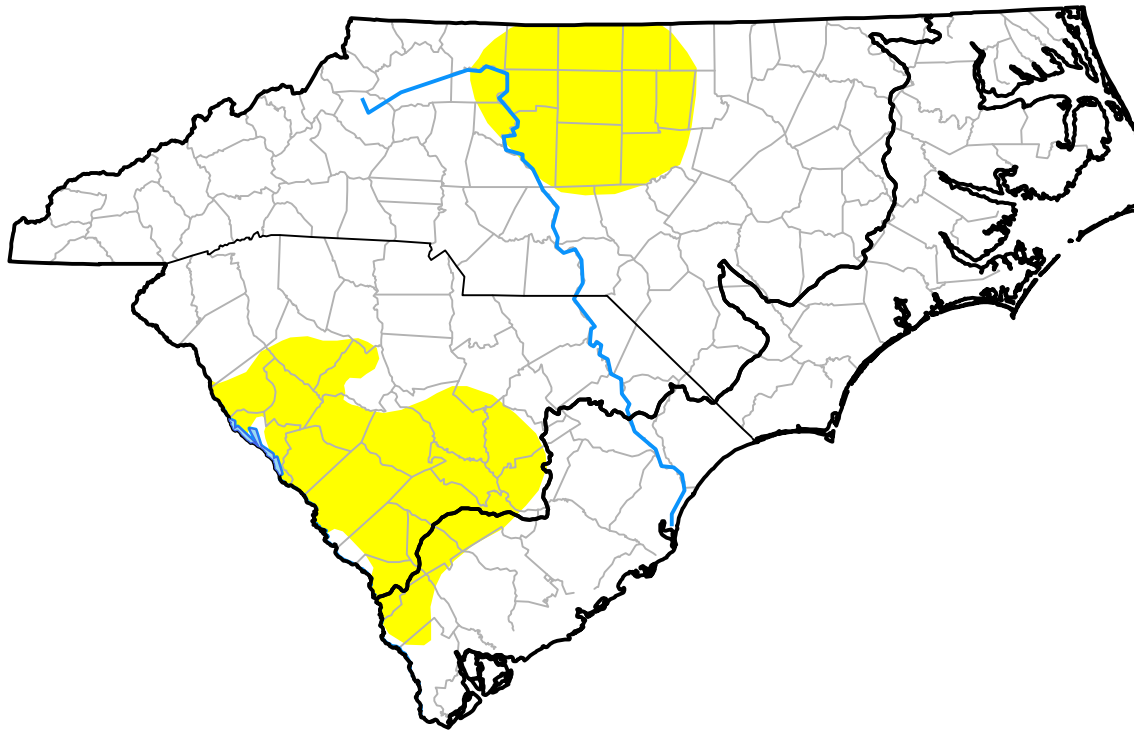


# Carolinas RDEWS and Surrounding Areas

(Released Thursday, Oct. 23, 2014)  
 10:00 a.m. EDT



Drought Conditions (Percent Area)

	None	D0-D4	D1-D4	D2-D4	D3-D4	D4
<b>Current</b>	80.57	19.43	0.00	0.00	0.00	0.00
<b>Last Week</b> <i>10-16-2014</i>	80.65	19.35	0.00	0.00	0.00	0.00
<b>3 Months Ago</b> <i>07-24-2014</i>	75.51	24.49	0.00	0.00	0.00	0.00
<b>Start of Calendar Year</b> <i>01-02-2014</i>	95.16	4.84	0.00	0.00	0.00	0.00
<b>Start of Water Year</b> <i>10-02-2014</i>	73.31	26.69	0.00	0.00	0.00	0.00
<b>One Year Ago</b> <i>10-24-2013</i>	84.29	15.71	0.00	0.00	0.00	0.00

Intensity:

- None
- D0 Abnormally Dry
- D1 Moderate Drought
- D2 Severe Drought
- D3 Extreme Drought
- D4 Exceptional Drought

The Drought Monitor focuses on broad-scale conditions. Local conditions may vary. For more information on the Drought Monitor, go to <https://droughtmonitor.unl.edu/About.aspx>

Author:

Michael Brewer  
 NCEI/NOAA

