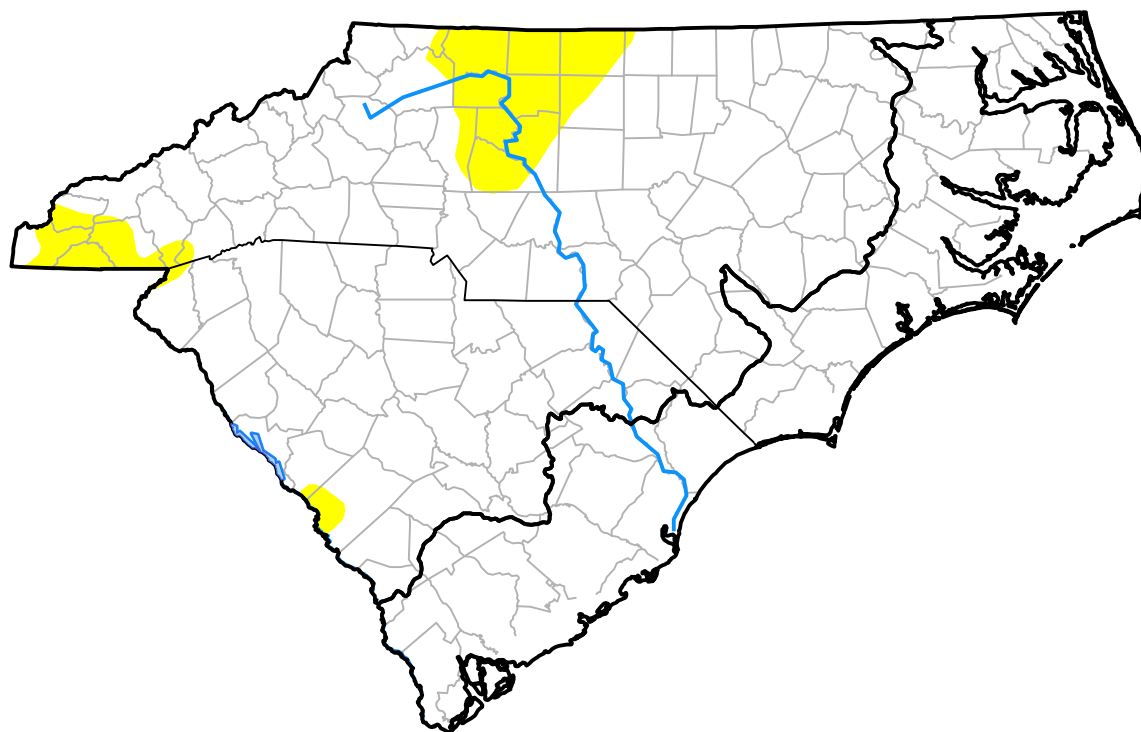


U.S. Drought Monitor

Coastal Carolinas RDEWS

February 3, 2015
 (Released Thursday, Feb. 5, 2015)
 Valid 7 a.m. EST



Drought Conditions (Percent Area)

	None	D0	D1	D2	D3	D4
Current	100.00	0.00	0.00	0.00	0.00	0.00
Last Week <i>01-29-2015</i>	100.00	0.00	0.00	0.00	0.00	0.00
3 Months Ago <i>11-06-2014</i>	74.18	25.82	0.00	0.00	0.00	0.00
Start of Calendar Year <i>12-31-2014</i>	87.83	12.17	0.00	0.00	0.00	0.00
Start of Water Year <i>10-02-2014</i>	94.28	5.72	0.00	0.00	0.00	0.00
One Year Ago <i>02-06-2014</i>	80.87	19.13	0.00	0.00	0.00	0.00

Intensity:



The Drought Monitor focuses on broad-scale conditions. Local conditions may vary. For more information on the Drought Monitor, go to <https://droughtmonitor.unl.edu/About.aspx>

Author:

Brian Fuchs
 National Drought Mitigation Center

