

U.S. Drought Monitor

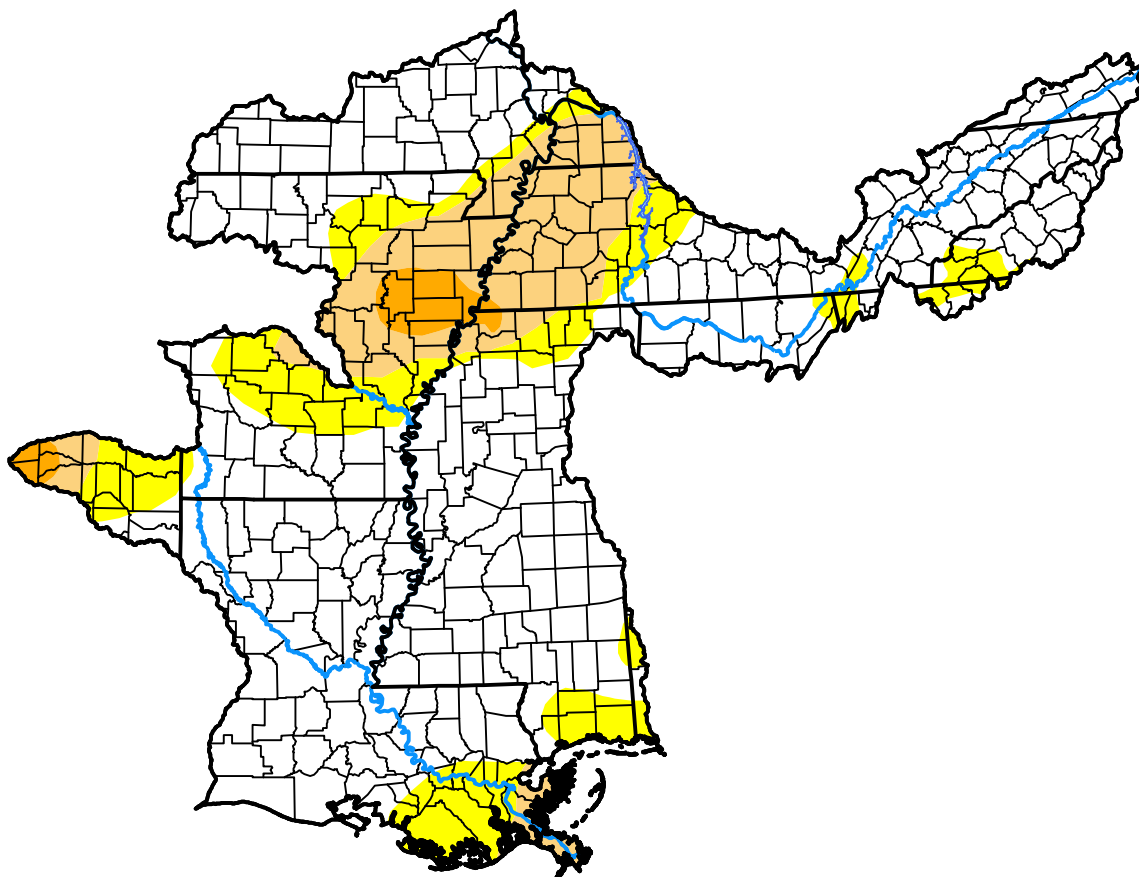
Lower Mississippi RFC

February 3, 2015
 (Released Thursday, Feb. 5, 2015)

Valid 7 a.m. EST

Drought Conditions (Percent Area)

	None	D0-D4	D1-D4	D2-D4	D3-D4	D4
Current	70.58	29.42	14.53	2.09	0.00	0.00
Last Week <i>01-29-2015</i>	74.42	25.58	11.57	0.41	0.00	0.00
3 Months Ago <i>11-06-2014</i>	74.49	25.51	7.74	0.21	0.00	0.00
Start of Calendar Year <i>12-31-2014</i>	57.20	42.80	10.03	1.05	0.00	0.00
Start of Water Year <i>10-02-2014</i>	67.49	32.51	4.70	0.22	0.00	0.00
One Year Ago <i>02-06-2014</i>	71.93	28.07	11.54	1.43	0.00	0.00



Intensity:



The Drought Monitor focuses on broad-scale conditions. Local conditions may vary. For more information on the Drought Monitor, go to <https://droughtmonitor.unl.edu/About.aspx>

Author:

Brian Fuchs
 National Drought Mitigation Center

