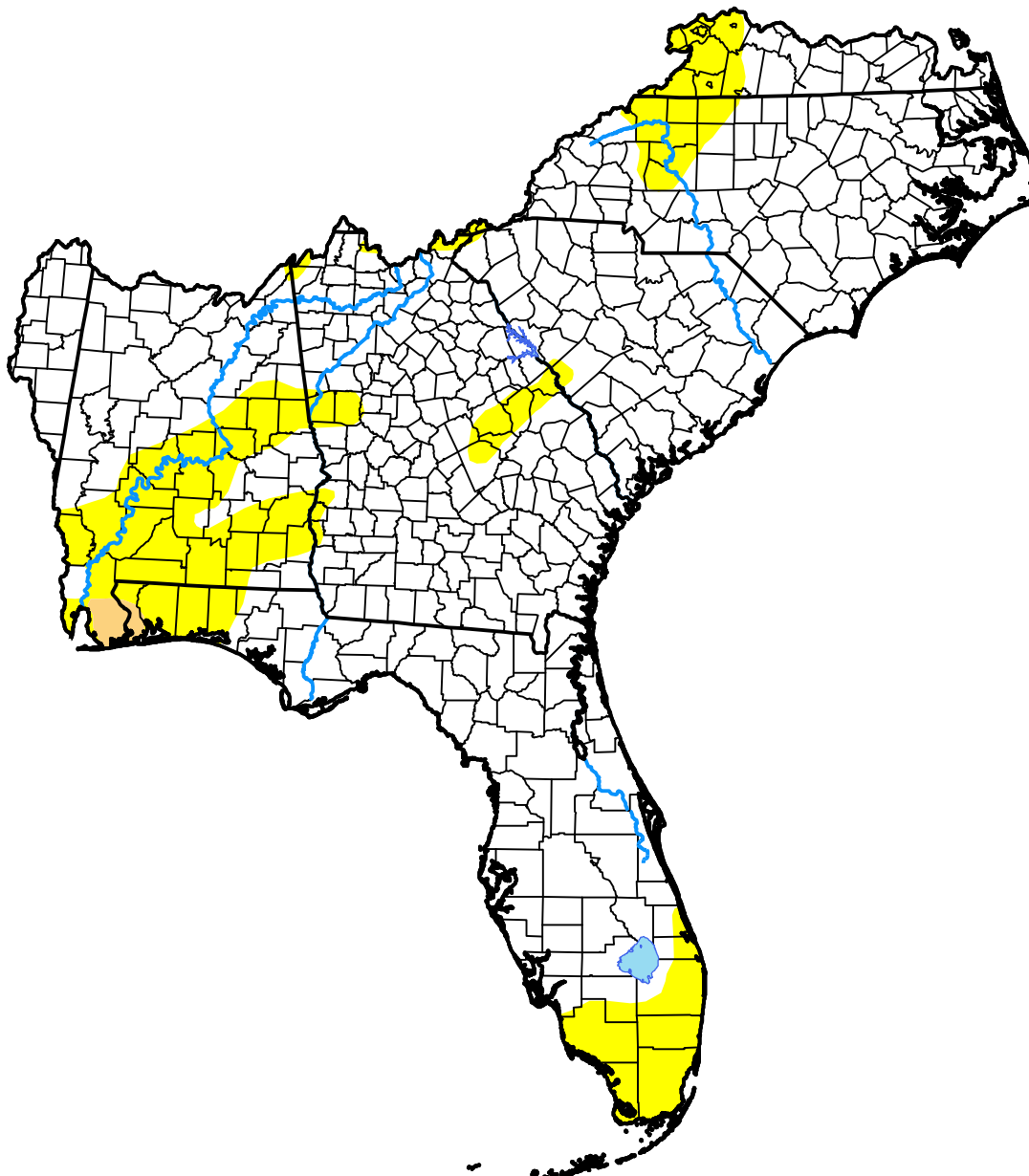


# U.S. Drought Monitor

## Southeast RFC

**February 3, 2015**  
 (Released Thursday, Feb. 5, 2015)

Valid 7 a.m. EST



*Drought Conditions (Percent Area)*

	None	D0-D4	D1-D4	D2-D4	D3-D4	D4
<b>Current</b>	82.60	17.40	0.48	0.00	0.00	0.00
<b>Last Week</b> <i>01-29-2015</i>	84.29	15.71	0.48	0.00	0.00	0.00
<b>3 Months Ago</b> <i>11-06-2014</i>	50.98	49.02	10.58	0.72	0.00	0.00
<b>Start of Calendar Year</b> <i>12-31-2014</i>	84.78	15.22	0.84	0.00	0.00	0.00
<b>Start of Water Year</b> <i>10-02-2014</i>	54.13	45.87	10.81	1.38	0.00	0.00
<b>One Year Ago</b> <i>02-06-2014</i>	89.50	10.50	0.00	0.00	0.00	0.00

***Intensity:***

- None
- D0 Abnormally Dry
- D1 Moderate Drought
- D2 Severe Drought
- D3 Extreme Drought
- D4 Exceptional Drought

*The Drought Monitor focuses on broad-scale conditions. Local conditions may vary. For more information on the Drought Monitor, go to <https://droughtmonitor.unl.edu/About.aspx>*

***Author:***

Brian Fuchs  
 National Drought Mitigation Center

