

U.S. Drought Monitor

Tennessee Watershed

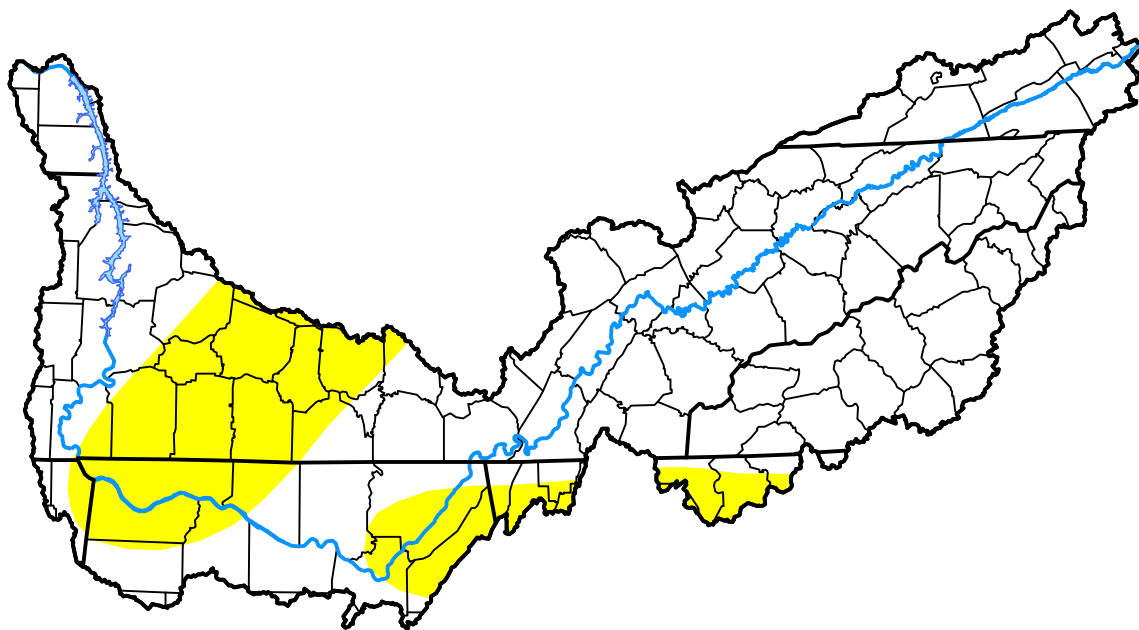
May 12, 2015

(Released Thursday, May. 14, 2015)

Valid 8 a.m. EDT

Drought Conditions (Percent Area)

	None	D0	D1	D2	D3	D4
Current	78.53	21.47	0.00	0.00	0.00	0.00
Last Week <i>05-07-2015</i>	97.01	2.99	0.00	0.00	0.00	0.00
3 Months Ago <i>02-12-2015</i>	58.23	33.32	7.07	1.37	0.00	0.00
Start of Calendar Year <i>12-31-2014</i>	96.33	3.67	0.00	0.00	0.00	0.00
Start of Water Year <i>10-02-2014</i>	73.11	26.89	0.00	0.00	0.00	0.00
One Year Ago <i>05-15-2014</i>	29.55	63.59	6.86	0.00	0.00	0.00



Intensity:

None	D2 Severe Drought
D0 Abnormally Dry	D3 Extreme Drought
D1 Moderate Drought	D4 Exceptional Drought

The Drought Monitor focuses on broad-scale conditions. Local conditions may vary. For more information on the Drought Monitor, go to <https://droughtmonitor.unl.edu/About.aspx>

Author:

Mark Svoboda
National Drought Mitigation Center



droughtmonitor.unl.edu