

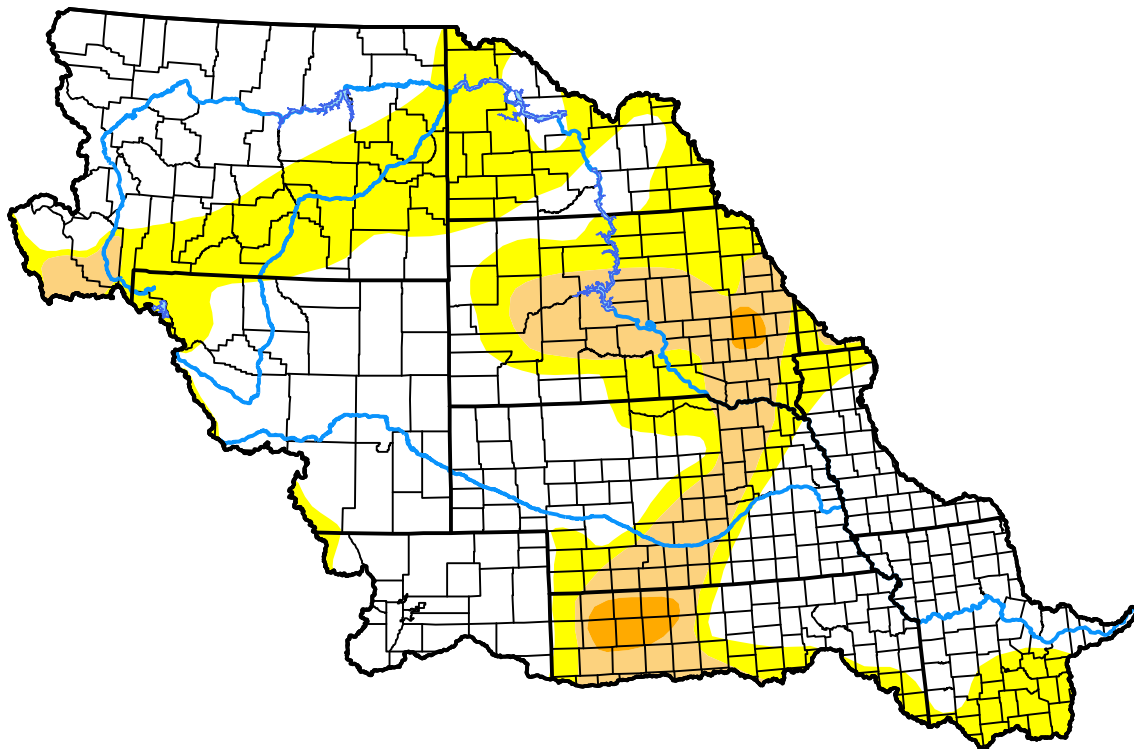
U.S. Drought Monitor

Missouri Watershed

May 12, 2015
 (Released Thursday, May. 14, 2015)
 Valid 8 a.m. EDT

Drought Conditions (Percent Area)

	None	D0-D4	D1-D4	D2-D4	D3-D4	D4
Current	59.49	40.51	12.50	1.22	0.00	0.00
Last Week <i>05-07-2015</i>	52.50	47.50	21.49	4.43	0.00	0.00
3 Months Ago <i>02-12-2015</i>	73.58	26.42	1.99	0.72	0.00	0.00
Start of Calendar Year <i>12-31-2014</i>	77.54	22.46	1.98	0.72	0.00	0.00
Start of Water Year <i>10-02-2014</i>	90.64	9.36	2.25	0.88	0.00	0.00
One Year Ago <i>05-15-2014</i>	65.38	34.62	23.73	9.33	3.07	0.00



Intensity:

- None
- D0 Abnormally Dry
- D1 Moderate Drought
- D2 Severe Drought
- D3 Extreme Drought
- D4 Exceptional Drought

The Drought Monitor focuses on broad-scale conditions. Local conditions may vary. For more information on the Drought Monitor, go to <https://droughtmonitor.unl.edu/About.aspx>

Author:

Mark Svoboda
 National Drought Mitigation Center



droughtmonitor.unl.edu