

# U.S. Drought Monitor

# Arkansas-White-Red Watershed

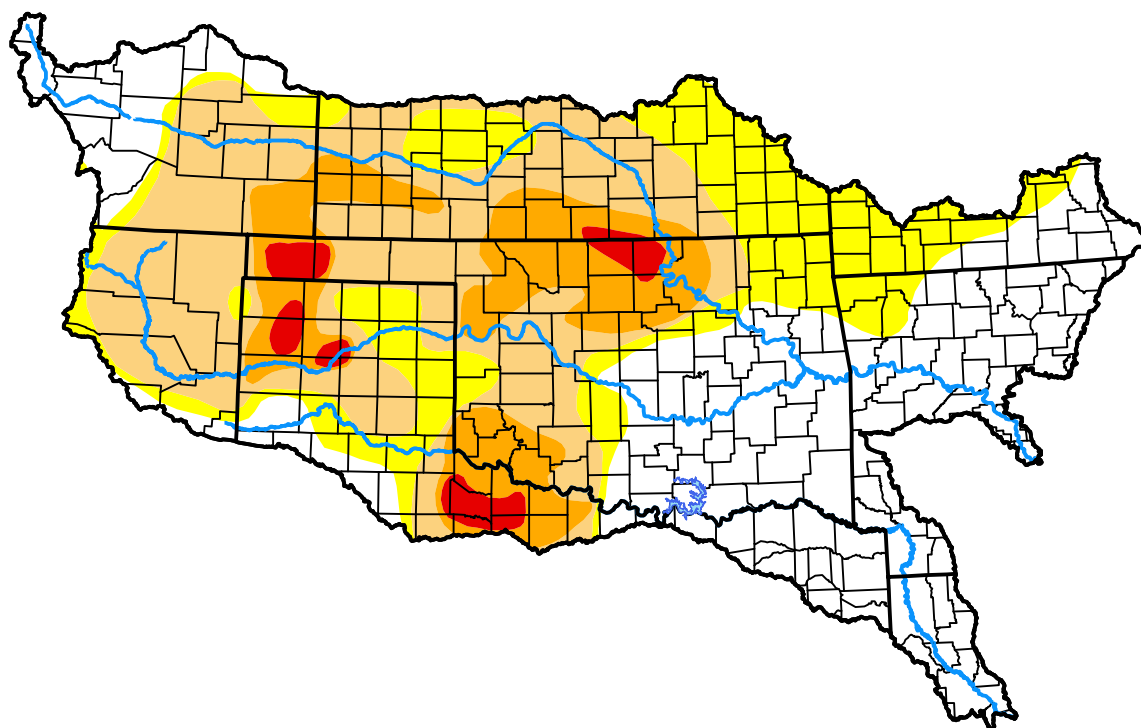
May 12, 2015

(Released Thursday, May. 14, 2015)

Valid 8 a.m. EDT

### Drought Conditions (Percent Area)

|  | None  | D0    | D1    | D2    | D3    | D4    |
|--|-------|-------|-------|-------|-------|-------|
| <b>Current</b>                                     | 37.04 | 19.54 | 28.53 | 12.34 | 2.55  | 0.00  |
| <b>Last Week</b><br><i>05-07-2015</i>              | 32.12 | 12.28 | 24.63 | 21.98 | 6.54  | 2.44  |
| <b>3 Months Ago</b><br><i>02-12-2015</i>           | 12.73 | 29.52 | 17.71 | 26.57 | 10.03 | 3.44  |
| <b>Start of Calendar Year</b><br><i>12-31-2014</i> | 23.11 | 18.07 | 19.71 | 26.21 | 9.75  | 3.15  |
| <b>Start of Water Year</b><br><i>10-02-2014</i>    | 12.85 | 23.37 | 20.50 | 30.24 | 10.50 | 2.54  |
| <b>One Year Ago</b><br><i>05-15-2014</i>           | 15.94 | 14.46 | 6.84  | 11.76 | 25.33 | 25.66 |



### Intensity:



The Drought Monitor focuses on broad-scale conditions. Local conditions may vary. For more information on the Drought Monitor, go to <https://droughtmonitor.unl.edu/About.aspx>

### Author:

Mark Svoboda  
National Drought Mitigation Center



[droughtmonitor.unl.edu](https://droughtmonitor.unl.edu)