

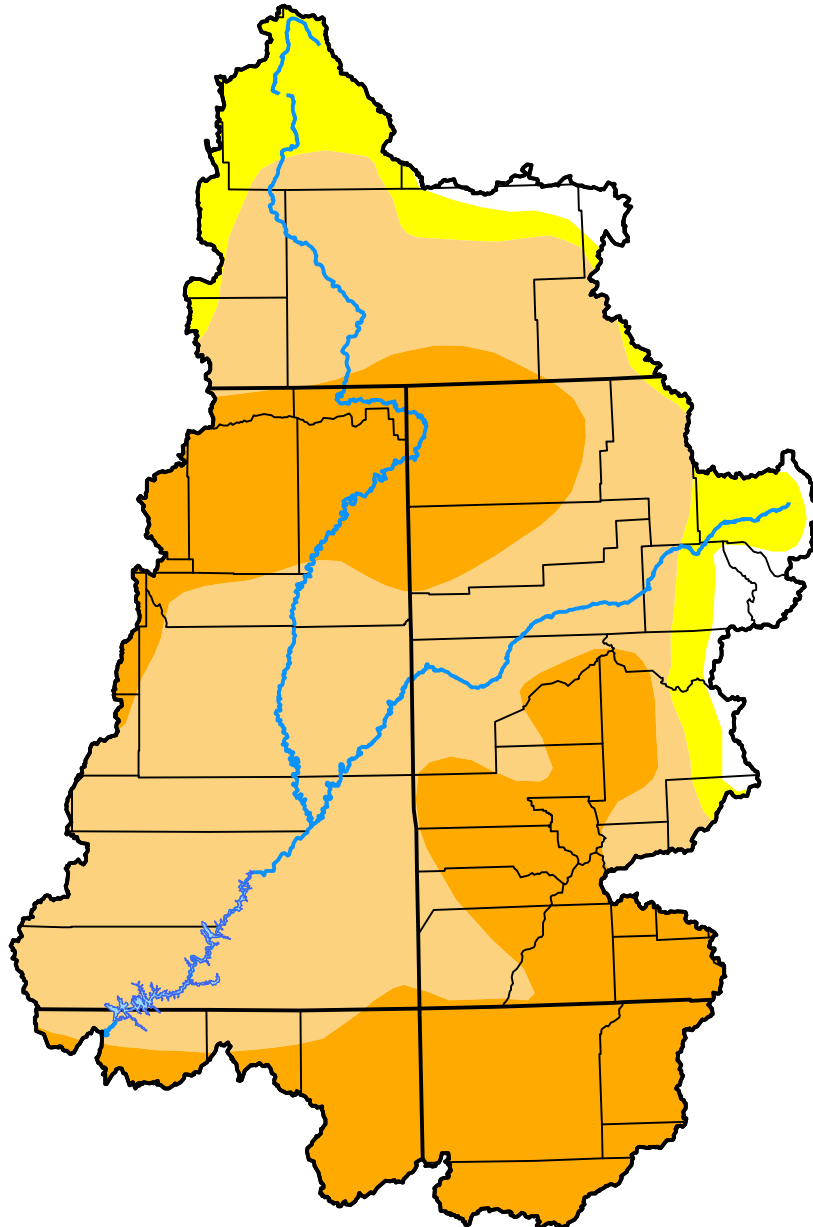
U.S. Drought Monitor

Upper Colorado Watershed

May 12, 2015

(Released Thursday, May. 14, 2015)

Valid 8 a.m. EDT



Drought Conditions (Percent Area)

	None	D0	D1	D2	D3	D4
Current	2.88	8.62	50.74	37.76	0.00	0.00
Last Week <i>05-07-2015</i>	3.99	7.47	45.42	43.11	0.00	0.00
3 Months Ago <i>02-12-2015</i>	10.11	59.42	12.40	13.92	4.15	0.00
Start of Calendar Year <i>12-31-2014</i>	56.39	13.23	12.27	13.95	4.15	0.00
Start of Water Year <i>10-02-2014</i>	56.32	12.70	12.88	9.15	8.96	0.00
One Year Ago <i>05-15-2014</i>	36.09	24.91	21.06	17.83	0.12	0.00

Intensity:

- None
- D0 Abnormally Dry
- D1 Moderate Drought
- D2 Severe Drought
- D3 Extreme Drought
- D4 Exceptional Drought

The Drought Monitor focuses on broad-scale conditions. Local conditions may vary. For more information on the Drought Monitor, go to <https://droughtmonitor.unl.edu/About.aspx>

Author:

Mark Svoboda
National Drought Mitigation Center



droughtmonitor.unl.edu