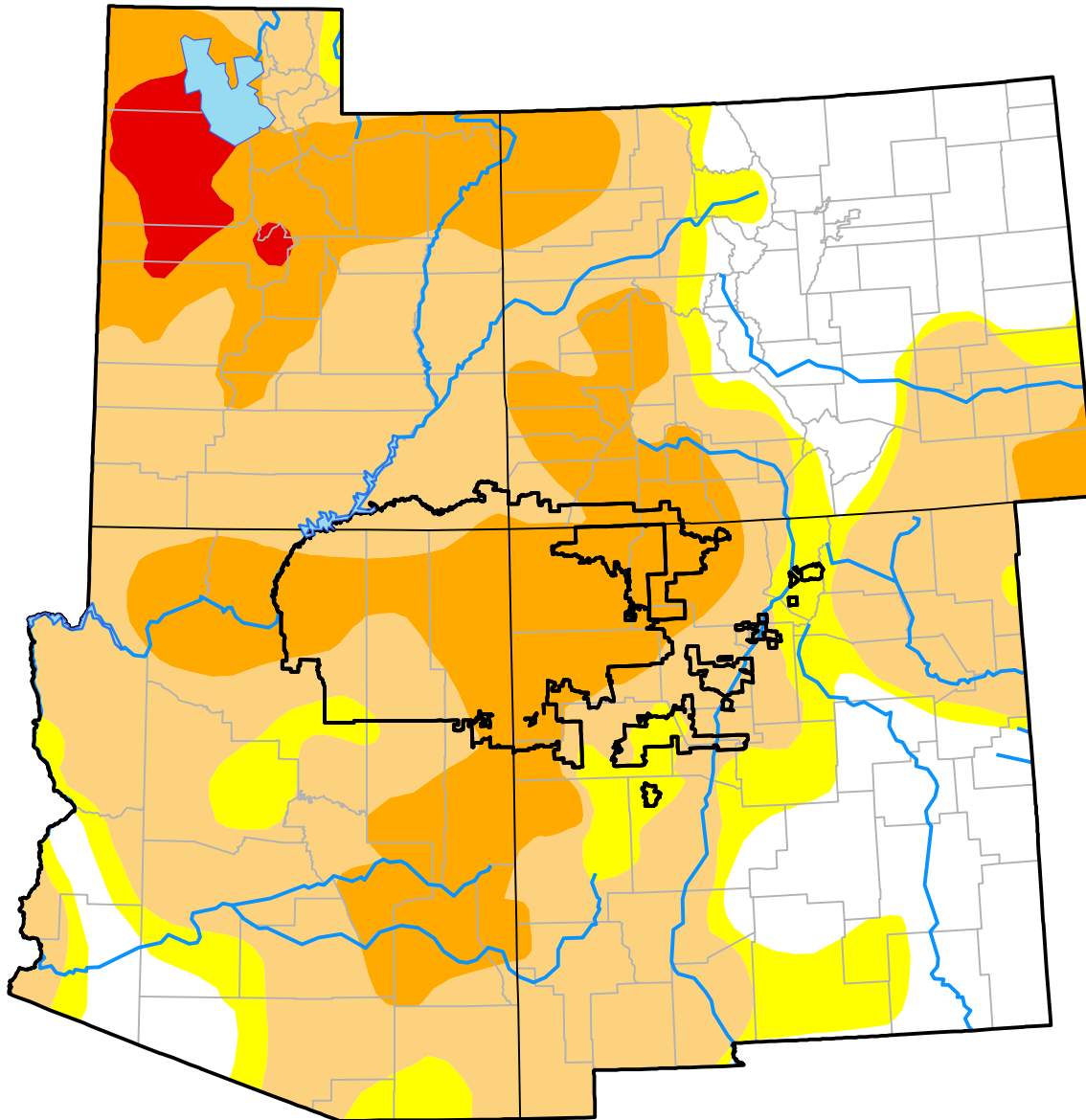


# Four Corners RDEWS and Surrounding Areas

(Released Thursday, May. 14, 2015)

Valid 8 a.m. EDT



Drought Conditions (Percent Area)

	None	D0-D4	D1-D4	D2-D4	D3-D4	D4
<b>Current</b>	19.81	80.19	69.24	26.20	2.00	0.00
<b>Last Week</b> <i>05-07-2015</i>	19.64	80.36	69.58	29.04	2.00	0.00
<b>3 Months Ago</b> <i>02-12-2015</i>	15.90	84.10	56.00	20.40	1.81	0.00
<b>Start of Calendar Year</b> <i>12-31-2014</i>	24.36	75.64	58.03	23.42	2.09	0.00
<b>Start of Water Year</b> <i>10-02-2014</i>	25.47	74.53	58.11	24.77	3.89	0.00
<b>One Year Ago</b> <i>05-15-2014</i>	12.80	87.20	76.80	54.17	14.66	1.75

Intensity:

- None
- D0 Abnormally Dry
- D1 Moderate Drought
- D2 Severe Drought
- D3 Extreme Drought
- D4 Exceptional Drought

The Drought Monitor focuses on broad-scale conditions. Local conditions may vary. For more information on the Drought Monitor, go to <https://droughtmonitor.unl.edu/About.aspx>

Author:

Mark Svoboda  
National Drought Mitigation Center

