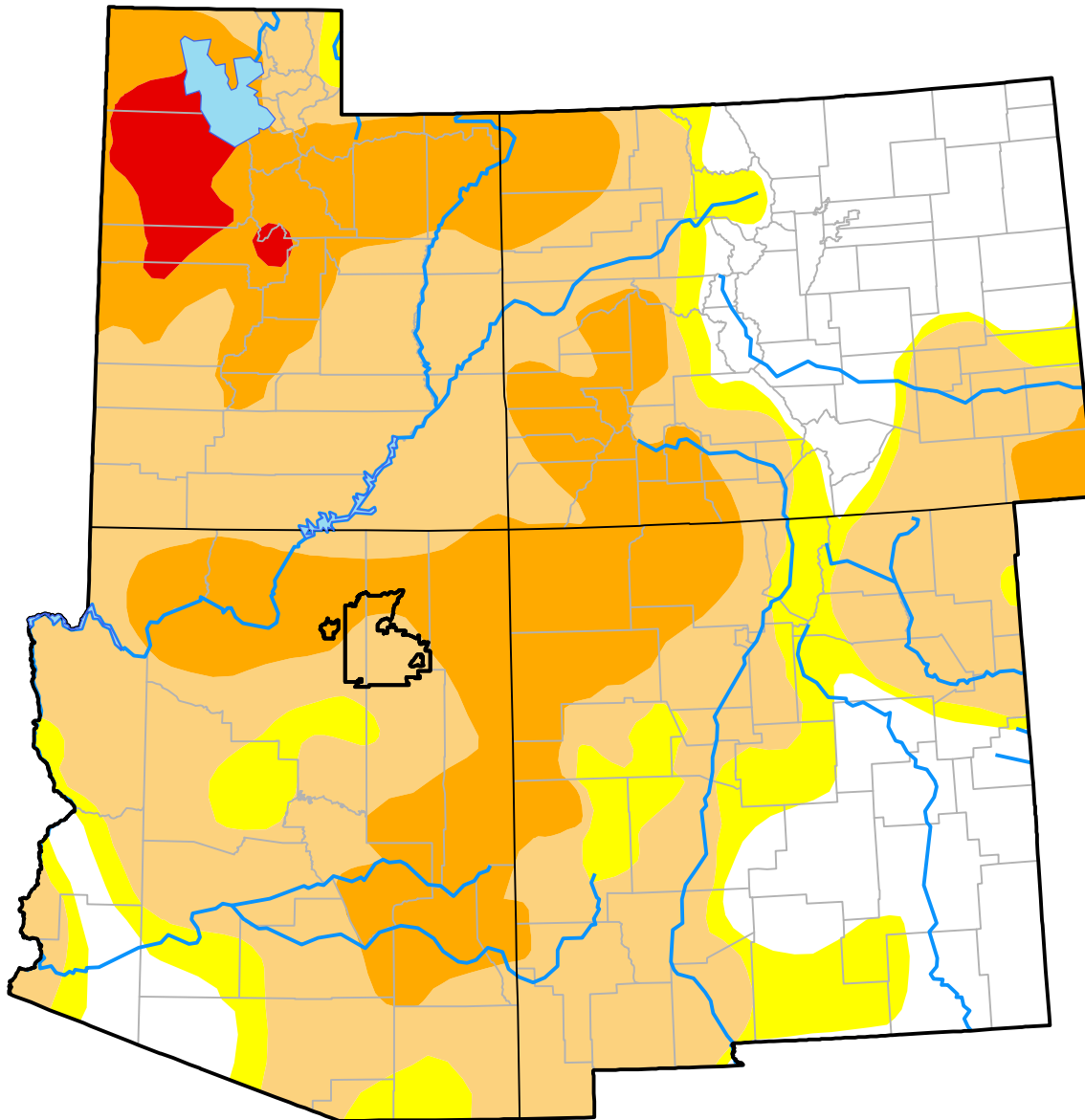


U.S. Drought Monitor Hopi RDEWS

May 12, 2015
(Released Thursday, May. 14, 2015)
Valid 8 a.m. EDT



Drought Conditions (Percent Area)

	None	D0	D1	D2	D3	D4
Current	0.00	0.00	75.95	24.05	0.00	0.00
Last Week <i>05-07-2015</i>	0.00	0.00	75.95	24.05	0.00	0.00
3 Months Ago <i>02-12-2015</i>	0.00	0.11	75.83	24.07	0.00	0.00
Start of Calendar Year <i>12-31-2014</i>	0.00	0.00	59.13	40.87	0.00	0.00
Start of Water Year <i>10-02-2014</i>	0.00	0.00	18.85	81.15	0.00	0.00
One Year Ago <i>05-15-2014</i>	0.00	0.00	76.00	24.00	0.00	0.00

Intensity:



The Drought Monitor focuses on broad-scale conditions. Local conditions may vary. For more information on the Drought Monitor, go to <https://droughtmonitor.unl.edu/About.aspx>

Author:

Mark Svoboda
National Drought Mitigation Center

