

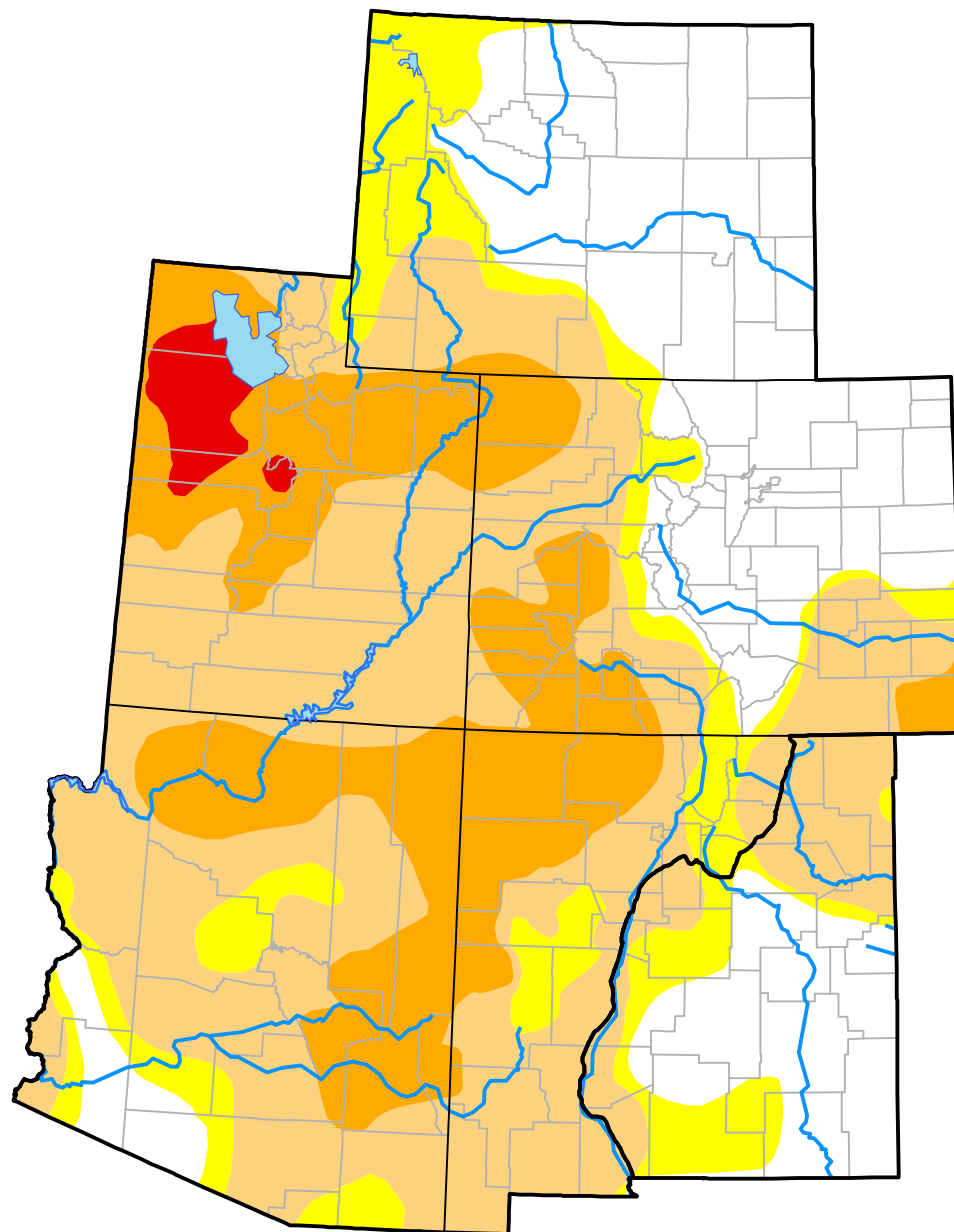
# U.S. Drought Monitor

## Intermountain West RDEWS

May 12, 2015

(Released Thursday, May. 14, 2015)

Valid 8 a.m. EDT



Drought Conditions (Percent Area)

	None	D0	D1	D2	D3	D4
<b>Current</b>	28.37	12.67	37.44	19.89	1.62	0.00
<b>Last Week</b> <i>05-07-2015</i>	28.31	12.45	35.41	22.20	1.62	0.00
<b>3 Months Ago</b> <i>02-12-2015</i>	29.27	25.21	28.94	15.11	1.47	0.00
<b>Start of Calendar Year</b> <i>12-31-2014</i>	38.06	14.78	28.13	17.34	1.70	0.00
<b>Start of Water Year</b> <i>10-02-2014</i>	38.96	13.81	27.10	16.97	3.16	0.00
<b>One Year Ago</b> <i>05-15-2014</i>	28.59	8.98	18.40	32.11	10.49	1.42

**Intensity:**

- None
- D0 Abnormally Dry
- D1 Moderate Drought
- D2 Severe Drought
- D3 Extreme Drought
- D4 Exceptional Drought

The Drought Monitor focuses on broad-scale conditions. Local conditions may vary. For more information on the Drought Monitor, go to <https://droughtmonitor.unl.edu/About.aspx>

**Author:**

Mark Svoboda  
National Drought Mitigation Center

