

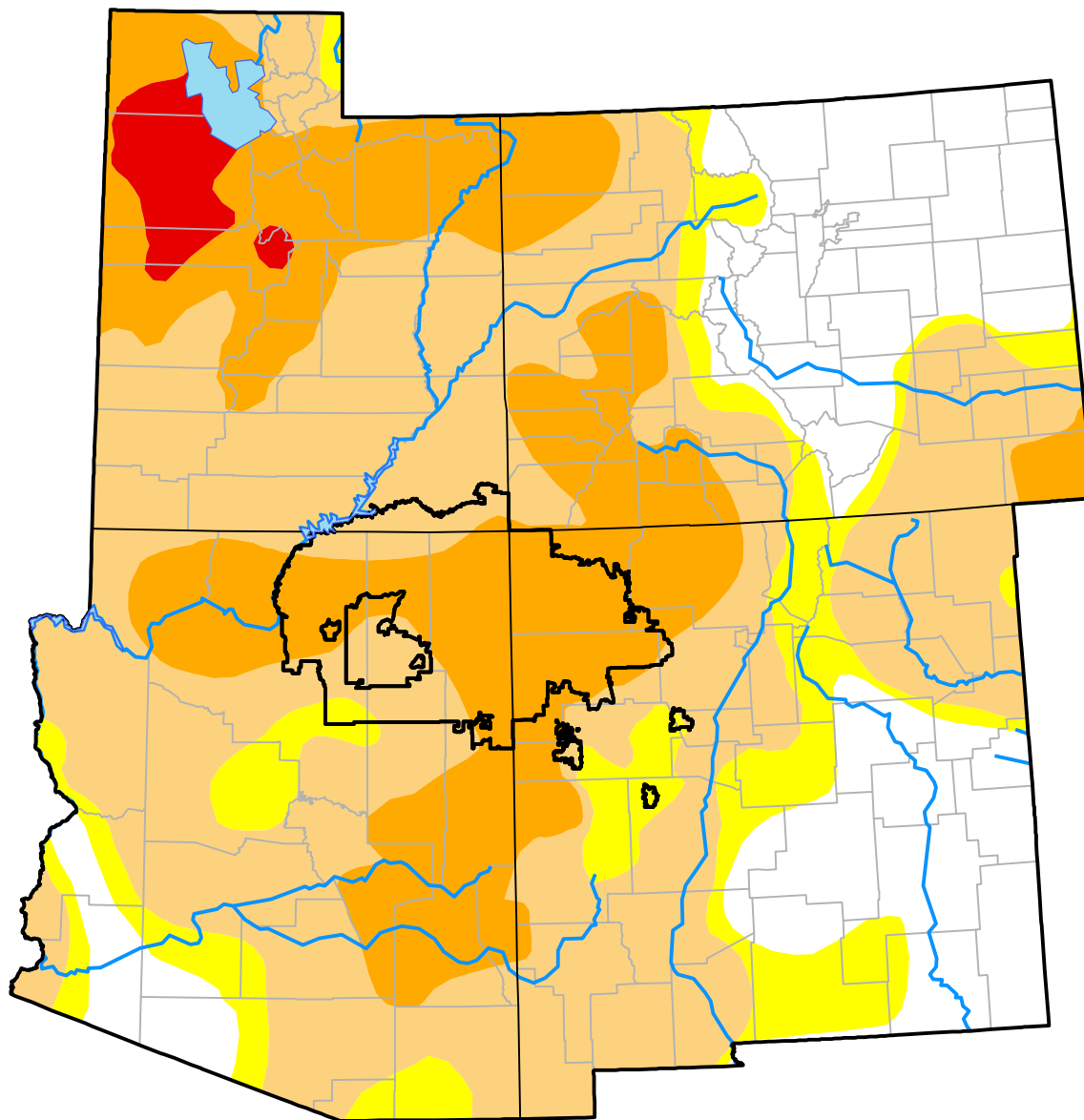
Nebraska RDEWS and Surrounding Areas

(Released Thursday, May. 14, 2015)

Valid 8 a.m. EDT

Drought Conditions (Percent Area)

	None	D0	D1	D2	D3	D4
Current	19.81	10.95	43.04	24.21	2.00	0.00
Last Week <i>05-07-2015</i>	19.64	10.78	40.54	27.04	2.00	0.00
3 Months Ago <i>02-12-2015</i>	15.90	28.10	35.60	18.59	1.81	0.00
Start of Calendar Year <i>12-31-2014</i>	24.36	17.62	34.60	21.33	2.09	0.00
Start of Water Year <i>10-02-2014</i>	25.47	16.42	33.34	20.88	3.89	0.00
One Year Ago <i>05-15-2014</i>	12.80	10.40	22.63	39.51	12.91	1.75



Intensity:

- None
- D0 Abnormally Dry
- D1 Moderate Drought
- D2 Severe Drought
- D3 Extreme Drought
- D4 Exceptional Drought

The Drought Monitor focuses on broad-scale conditions. Local conditions may vary. For more information on the Drought Monitor, go to <https://droughtmonitor.unl.edu/About.aspx>

Author:

Mark Svoboda
National Drought Mitigation Center

