

U.S. Drought Monitor

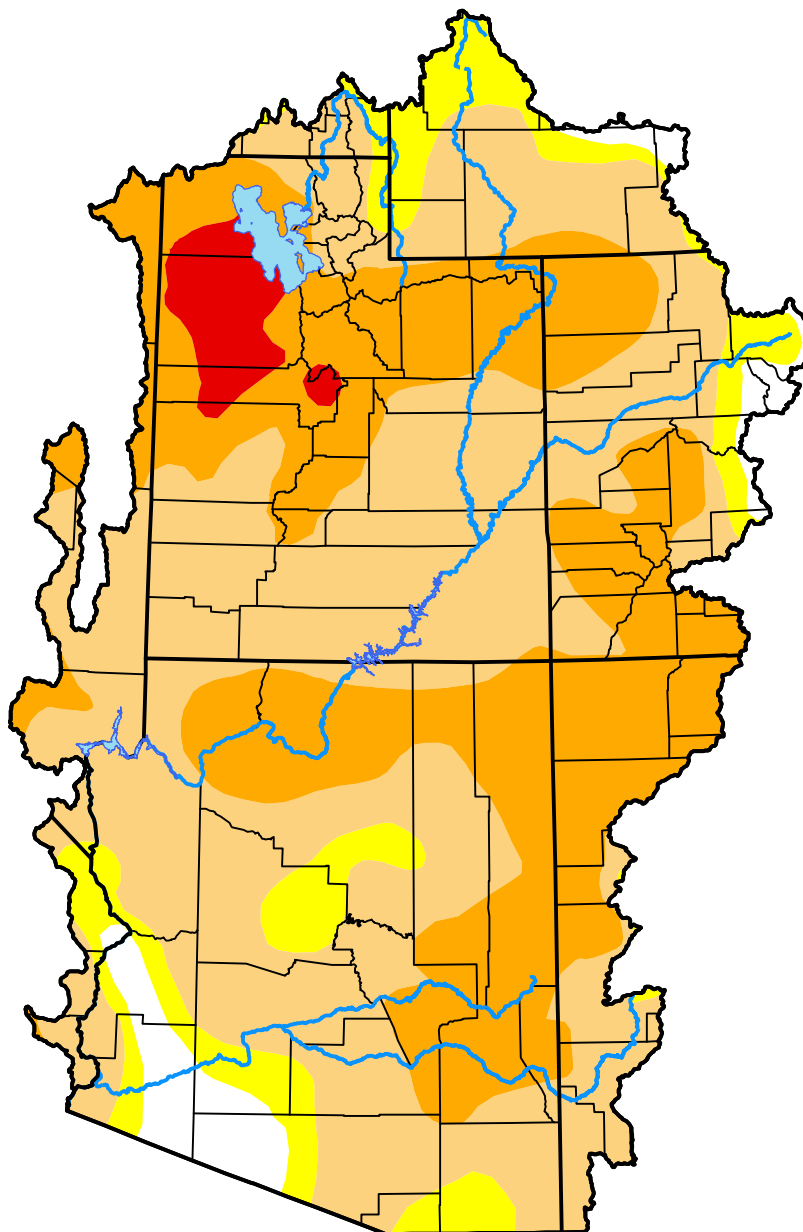
Colorado Basin RFC

May 12, 2015
 (Released Thursday, May. 14, 2015)

Valid 8 a.m. EDT

Drought Conditions (Percent Area)

	None	D0	D1	D2	D3	D4
Current	3.78	9.39	50.61	33.44	2.77	0.00
Last Week <i>05-07-2015</i>	4.19	8.97	48.65	35.43	2.77	0.00
3 Months Ago <i>02-12-2015</i>	8.97	31.73	40.14	16.66	2.50	0.00
Start of Calendar Year <i>12-31-2014</i>	23.89	15.23	36.04	21.68	3.17	0.00
Start of Water Year <i>10-02-2014</i>	23.48	13.92	36.23	21.53	4.84	0.00
One Year Ago <i>05-15-2014</i>	15.86	11.73	24.33	42.93	5.15	0.00



Intensity:

- None
- D0 Abnormally Dry
- D1 Moderate Drought
- D2 Severe Drought
- D3 Extreme Drought
- D4 Exceptional Drought

The Drought Monitor focuses on broad-scale conditions. Local conditions may vary. For more information on the Drought Monitor, go to <https://droughtmonitor.unl.edu/About.aspx>

Author:

Mark Svoboda
 National Drought Mitigation Center

