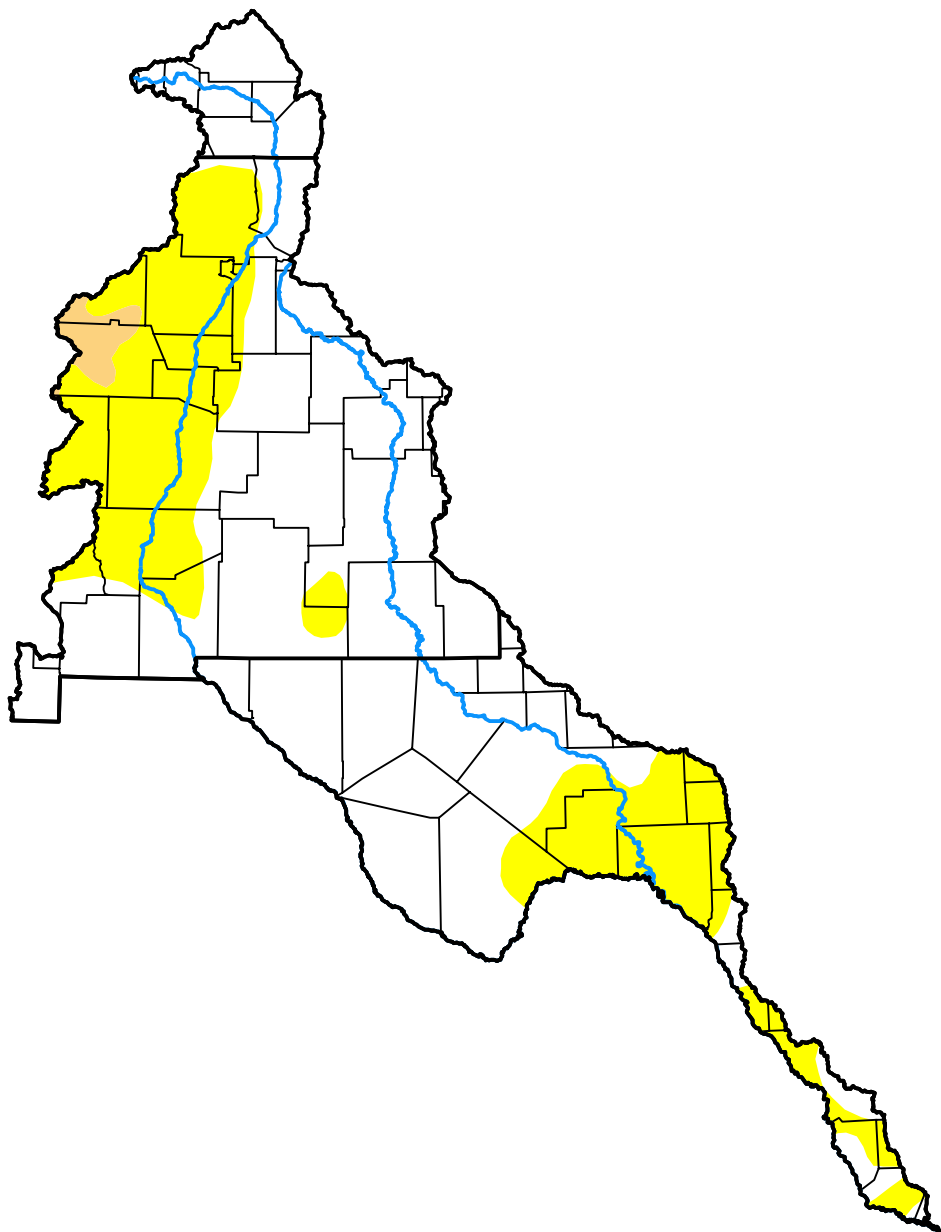


U.S. Drought Monitor

Rio Grande Watershed

October 20, 2015
 (Released Thursday, Oct. 22, 2015)

Valid 8 a.m. EDT



Drought Conditions (Percent Area)

	None	D0	D1	D2	D3	D4
Current	67.47	31.01	1.52	0.00	0.00	0.00
Last Week <i>10-15-2015</i>	68.14	30.26	1.60	0.00	0.00	0.00
3 Months Ago <i>07-23-2015</i>	70.82	22.67	6.51	0.00	0.00	0.00
Start of Calendar Year <i>12-31-2014</i>	37.70	26.55	31.24	4.03	0.48	0.00
Start of Water Year <i>10-01-2015</i>	59.44	35.64	4.92	0.00	0.00	0.00
One Year Ago <i>10-23-2014</i>	39.28	26.11	29.57	5.04	0.00	0.00

Intensity:

- None
- D0 Abnormally Dry
- D1 Moderate Drought
- D2 Severe Drought
- D3 Extreme Drought
- D4 Exceptional Drought

The Drought Monitor focuses on broad-scale conditions. Local conditions may vary. For more information on the Drought Monitor, go to <https://droughtmonitor.unl.edu/About.aspx>

Author:

Brad Rippey
 U.S. Department of Agriculture



droughtmonitor.unl.edu