

# U.S. Drought Monitor

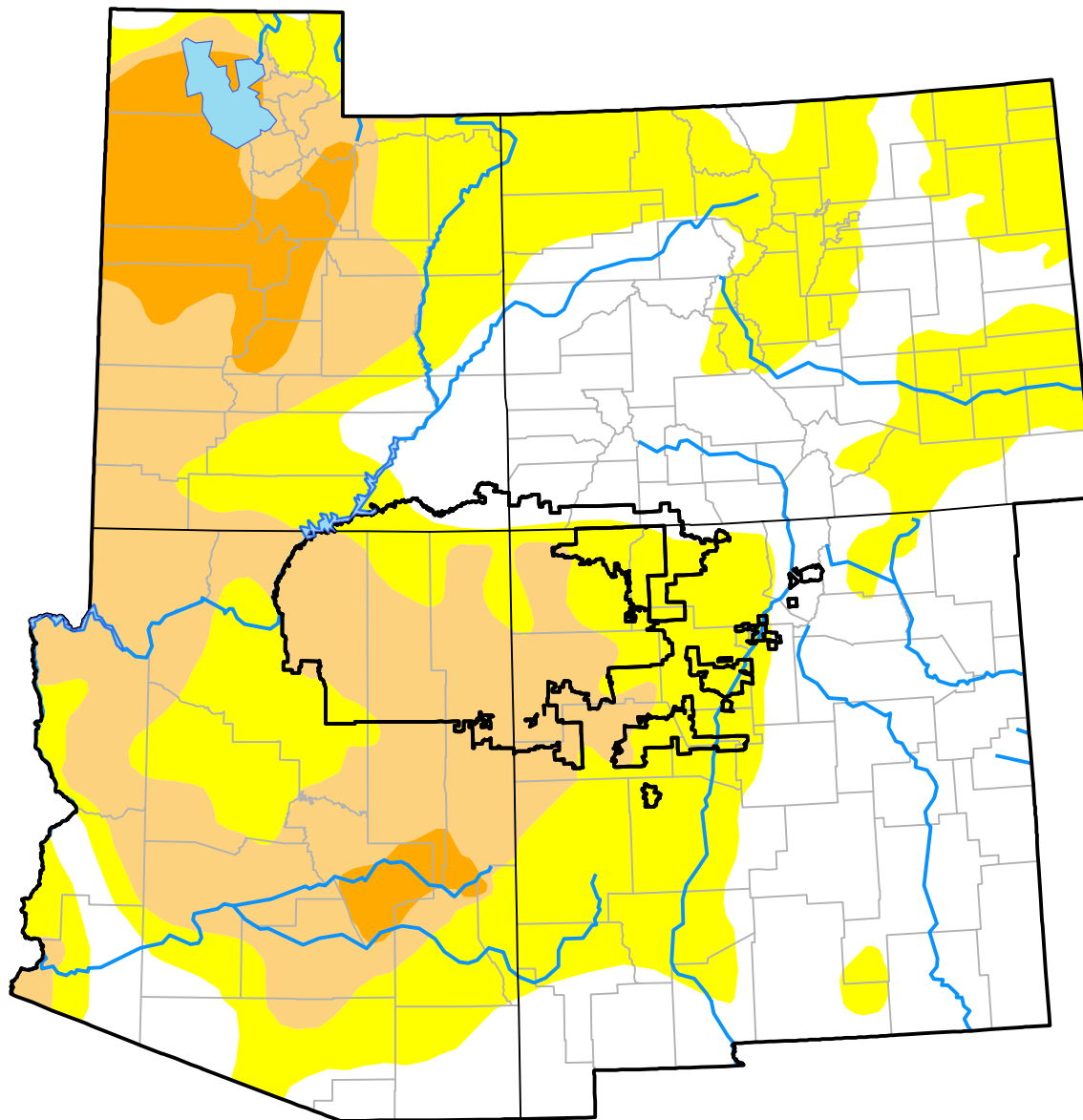
## Four Corners RDEWS

**October 20, 2015**  
*(Released Thursday, Oct. 22, 2015)*

Valid 8 a.m. EDT

*Drought Conditions (Percent Area)*

	None	D0	D1	D2	D3	D4
<b>Current</b>	7.53	35.18	57.28	0.00	0.00	0.00
<b>Last Week</b> <i>10-15-2015</i>	7.53	35.05	57.41	0.00	0.00	0.00
<b>3 Months Ago</b> <i>07-23-2015</i>	7.53	33.32	59.15	0.00	0.00	0.00
<b>Start of Calendar Year</b> <i>12-31-2014</i>	0.00	3.59	25.52	53.09	17.81	0.00
<b>Start of Water Year</b> <i>10-01-2015</i>	7.53	35.05	57.41	0.00	0.00	0.00
<b>One Year Ago</b> <i>10-23-2014</i>	0.00	6.98	16.76	65.61	10.65	0.00



***Intensity:***

- None
- D0 Abnormally Dry
- D1 Moderate Drought
- D2 Severe Drought
- D3 Extreme Drought
- D4 Exceptional Drought

*The Drought Monitor focuses on broad-scale conditions. Local conditions may vary. For more information on the Drought Monitor, go to <https://droughtmonitor.unl.edu/About.aspx>*

***Author:***

Brad Rippey  
 U.S. Department of Agriculture



**droughtmonitor.unl.edu**