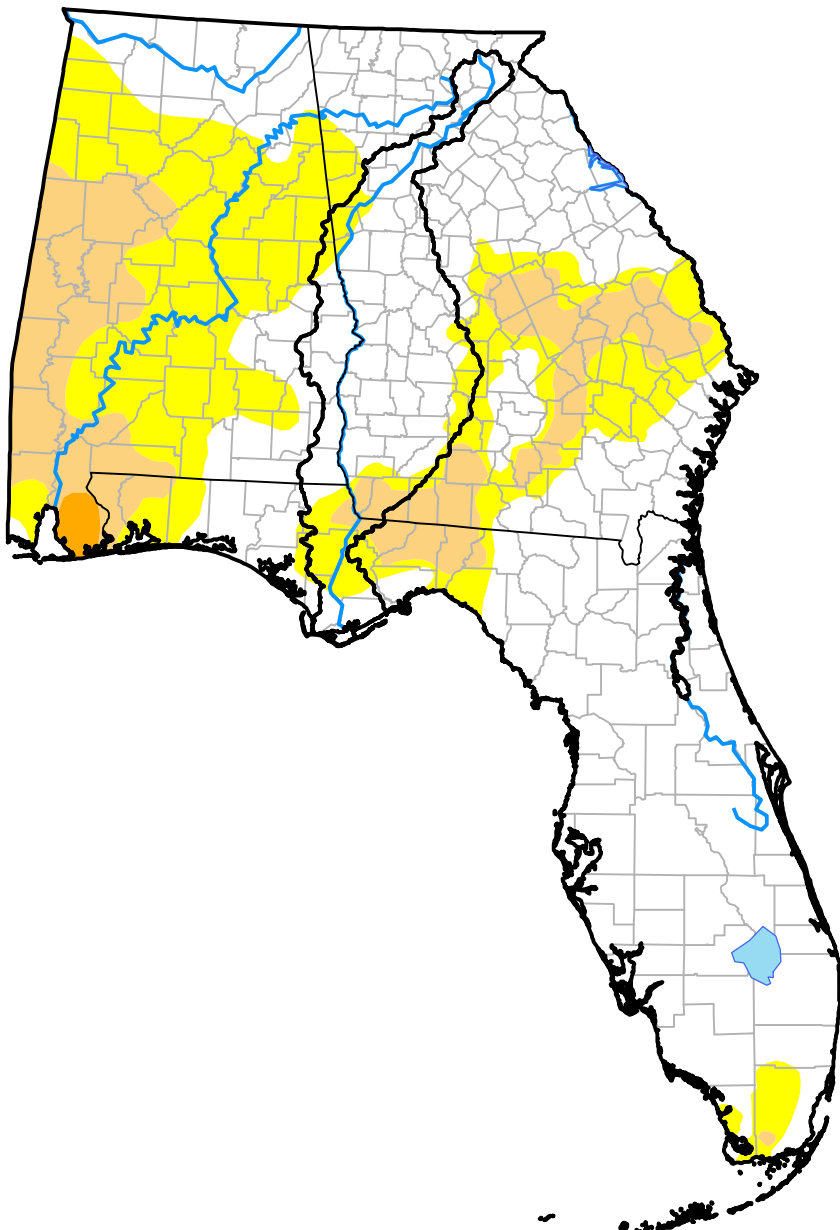


Upper Basin RDEWS and Surrounding Areas

(Released Thursday, Oct. 22, 2015)

10:08 a.m. EDT



Drought Conditions (Percent Area)

	None	D0	D1	D2	D3	D4
Current	60.71	25.03	13.76	0.50	0.00	0.00
Last Week <i>10-15-2015</i>	63.71	23.66	12.63	0.00	0.00	0.00
3 Months Ago <i>07-23-2015</i>	54.39	27.94	13.95	3.11	0.62	0.00
Start of Calendar Year <i>12-31-2014</i>	84.45	14.06	1.49	0.00	0.00	0.00
Start of Water Year <i>10-01-2015</i>	61.81	29.09	8.68	0.42	0.00	0.00
One Year Ago <i>10-23-2014</i>	62.17	26.54	10.21	1.08	0.00	0.00

Intensity:

- None
- D0 Abnormally Dry
- D1 Moderate Drought
- D2 Severe Drought
- D3 Extreme Drought
- D4 Exceptional Drought

The Drought Monitor focuses on broad-scale conditions. Local conditions may vary. For more information on the Drought Monitor, go to <https://droughtmonitor.unl.edu/About.aspx>

Author:

Brad Rippey
U.S. Department of Agriculture

