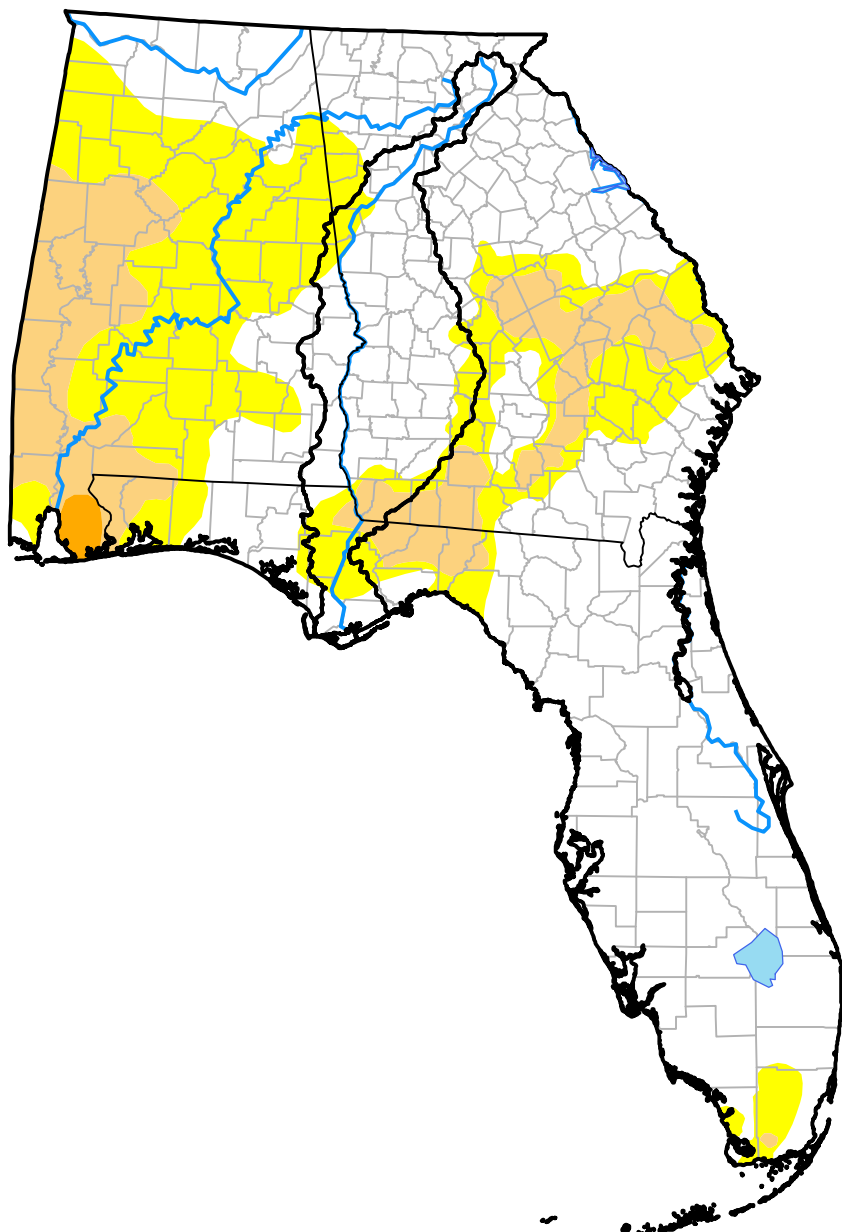


Upper Basin RDEWS and Surrounding Areas

(Released Thursday, Oct. 22, 2015)

10:08 a.m. EDT



Drought Conditions (Percent Area)

	None	D0-D4	D1-D4	D2-D4	D3-D4	D4
Current	60.71	39.29	14.26	0.50	0.00	0.00
Last Week <i>10-15-2015</i>	63.71	36.29	12.63	0.00	0.00	0.00
3 Months Ago <i>07-23-2015</i>	54.39	45.61	17.68	3.73	0.62	0.00
Start of Calendar Year <i>12-31-2014</i>	84.45	15.55	1.49	0.00	0.00	0.00
Start of Water Year <i>10-01-2015</i>	61.81	38.19	9.10	0.42	0.00	0.00
One Year Ago <i>10-23-2014</i>	62.17	37.83	11.29	1.08	0.00	0.00

Intensity:

- None
- D0 Abnormally Dry
- D1 Moderate Drought
- D2 Severe Drought
- D3 Extreme Drought
- D4 Exceptional Drought

The Drought Monitor focuses on broad-scale conditions. Local conditions may vary. For more information on the Drought Monitor, go to <https://droughtmonitor.unl.edu/About.aspx>

Author:

Brad Rippey
U.S. Department of Agriculture

