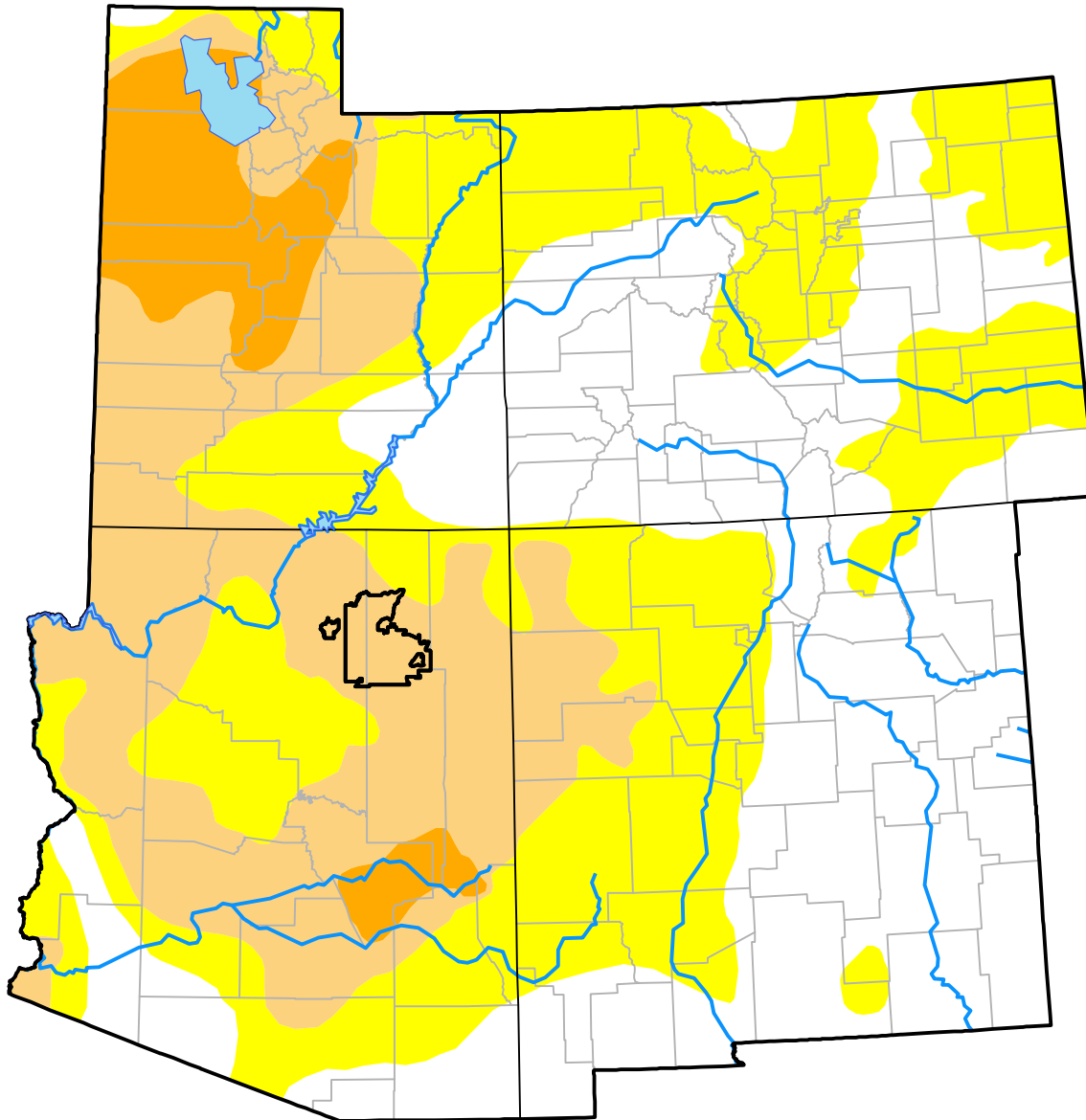


U.S. Drought Monitor Hopi RDEWS

October 20, 2015
(Released Thursday, Oct. 22, 2015)
Valid 8 a.m. EDT



Drought Conditions (Percent Area)

	None	D0-D4	D1-D4	D2-D4	D3-D4	D4
Current	0.00	100.00	99.77	0.00	0.00	0.00
Last Week <i>10-15-2015</i>	0.00	100.00	99.77	0.00	0.00	0.00
3 Months Ago <i>07-23-2015</i>	0.00	100.00	99.84	0.00	0.00	0.00
Start of Calendar Year <i>12-31-2014</i>	0.00	100.00	100.00	40.87	0.00	0.00
Start of Water Year <i>10-01-2015</i>	0.00	100.00	99.77	0.00	0.00	0.00
One Year Ago <i>10-23-2014</i>	0.00	100.00	100.00	81.15	0.00	0.00

Intensity:



The Drought Monitor focuses on broad-scale conditions. Local conditions may vary. For more information on the Drought Monitor, go to <https://droughtmonitor.unl.edu/About.aspx>

Author:

Brad Rippey
U.S. Department of Agriculture

