

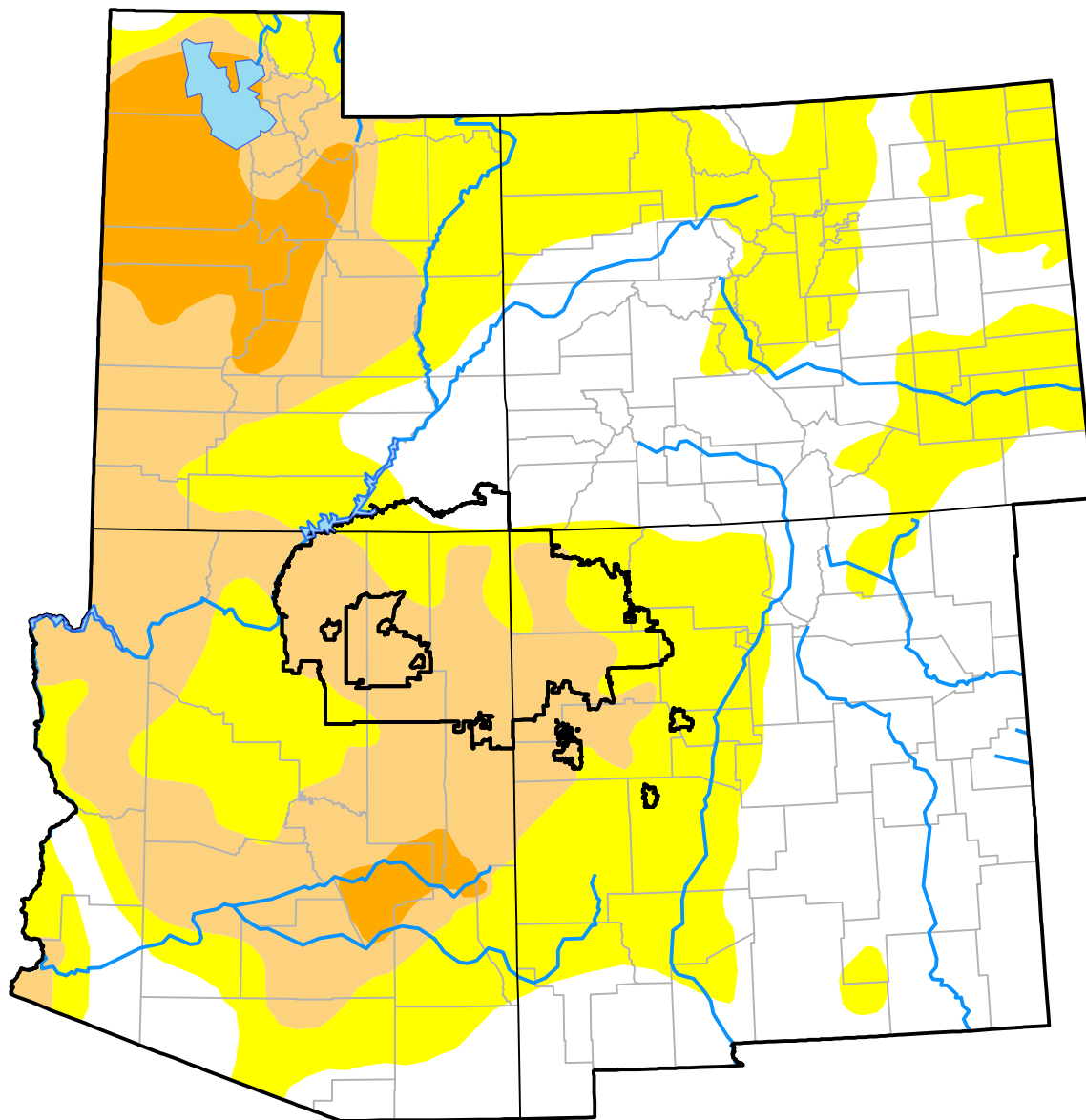
# Nebraska RDEWS and Surrounding Areas

(Released Thursday, Oct. 22, 2015)

Valid 8 a.m. EDT

Drought Conditions (Percent Area)

	None	D0-D4	D1-D4	D2-D4	D3-D4	D4
<b>Current</b>	35.86	64.14	28.67	6.11	0.00	0.00
<b>Last Week</b> <i>10-15-2015</i>	38.32	61.68	31.30	6.24	0.00	0.00
<b>3 Months Ago</b> <i>07-23-2015</i>	42.45	57.55	39.16	8.01	0.00	0.00
<b>Start of Calendar Year</b> <i>12-31-2014</i>	24.36	75.64	58.03	23.42	2.09	0.00
<b>Start of Water Year</b> <i>10-01-2015</i>	38.97	61.03	31.68	6.24	0.00	0.00
<b>One Year Ago</b> <i>10-23-2014</i>	25.78	74.22	57.69	23.70	1.45	0.00



**Intensity:**

- None
- D0 Abnormally Dry
- D1 Moderate Drought
- D2 Severe Drought
- D3 Extreme Drought
- D4 Exceptional Drought

The Drought Monitor focuses on broad-scale conditions. Local conditions may vary. For more information on the Drought Monitor, go to <https://droughtmonitor.unl.edu/About.aspx>

**Author:**

Brad Rippey  
U.S. Department of Agriculture

