

U.S. Drought Monitor

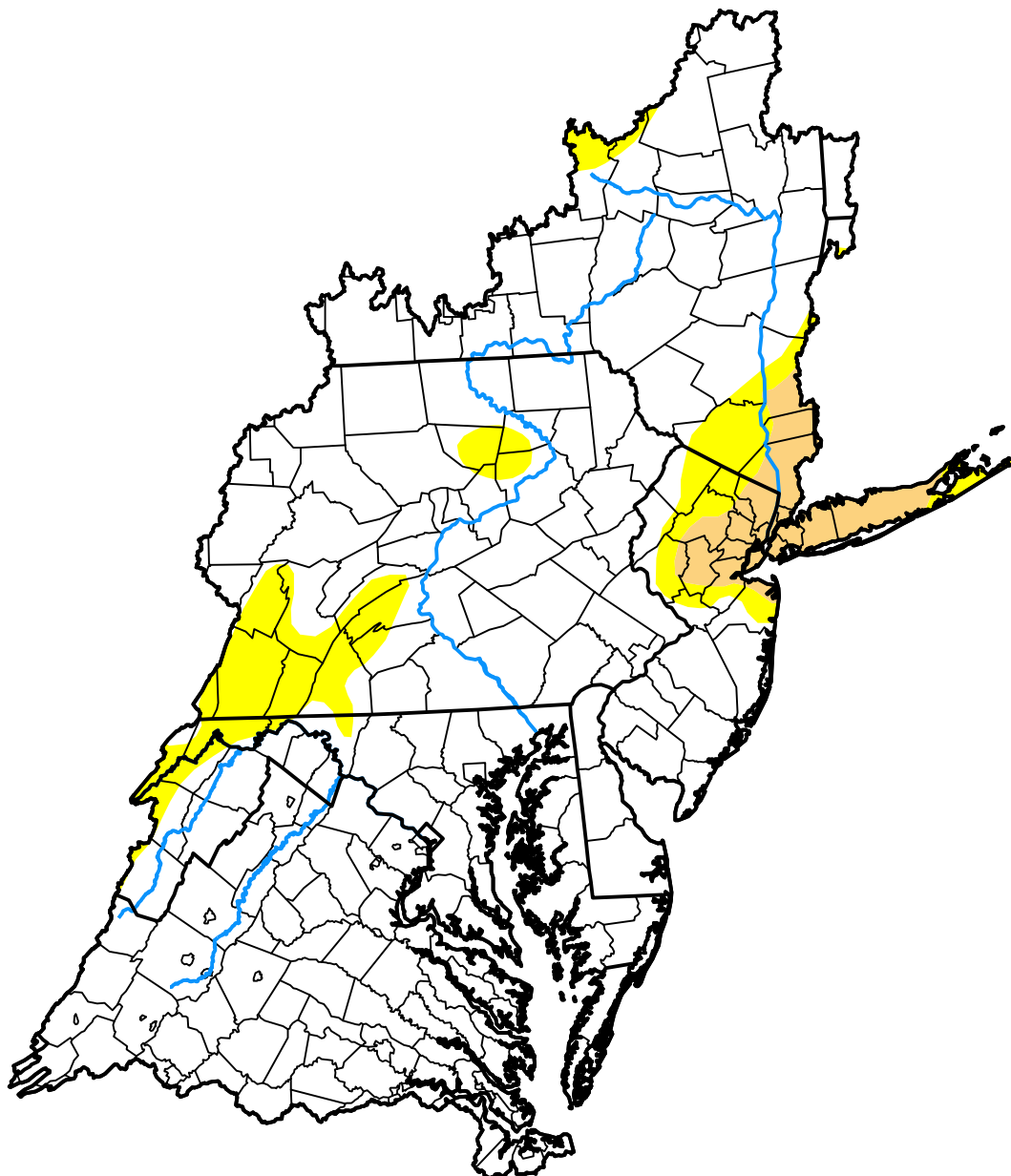
Mid Atlantic Watershed

November 17, 2015
 (Released Thursday, Nov. 19, 2015)

Valid 7 a.m. EST

Drought Conditions (Percent Area)

	None	D0	D1	D2	D3	D4
Current	87.31	8.95	3.74	0.00	0.00	0.00
Last Week <i>11-12-2015</i>	86.57	9.69	3.74	0.00	0.00	0.00
3 Months Ago <i>08-20-2015</i>	82.30	16.44	1.26	0.00	0.00	0.00
Start of Calendar Year <i>12-31-2014</i>	78.19	21.81	0.00	0.00	0.00	0.00
Start of Water Year <i>10-01-2015</i>	48.24	45.98	5.78	0.00	0.00	0.00
One Year Ago <i>11-20-2014</i>	61.73	36.19	2.07	0.00	0.00	0.00



Intensity:

- None
- D0 Abnormally Dry
- D1 Moderate Drought
- D2 Severe Drought
- D3 Extreme Drought
- D4 Exceptional Drought

The Drought Monitor focuses on broad-scale conditions. Local conditions may vary. For more information on the Drought Monitor, go to <https://droughtmonitor.unl.edu/About.aspx>

Author:

Richard Heim
 NCEI/NOAA

