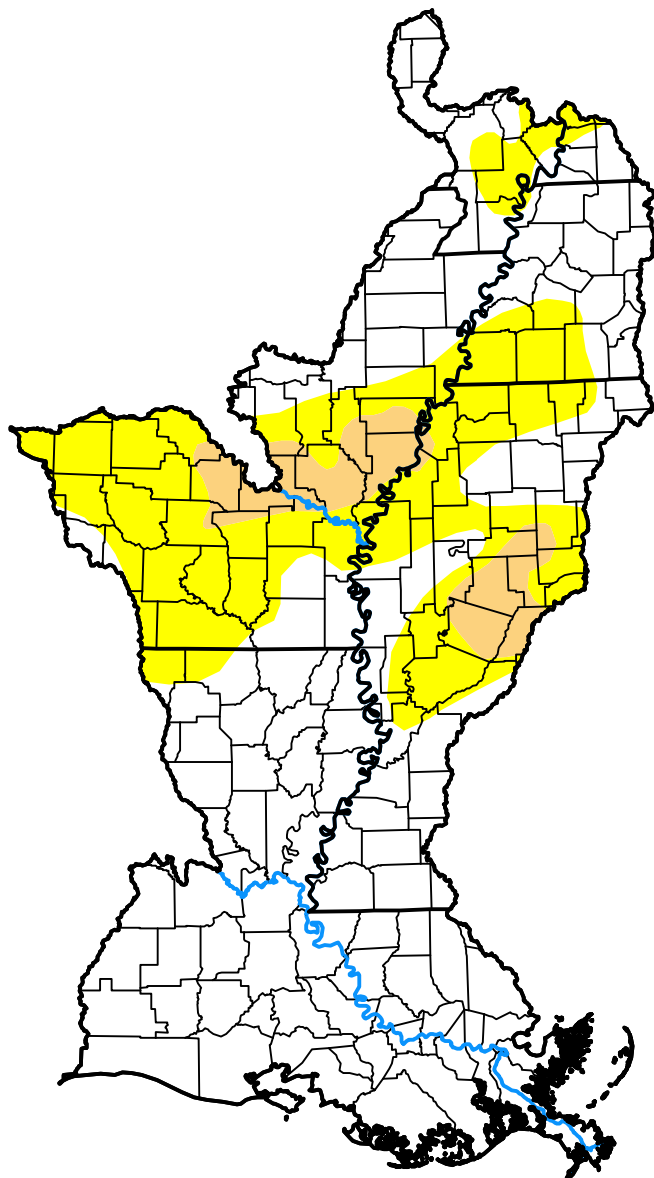


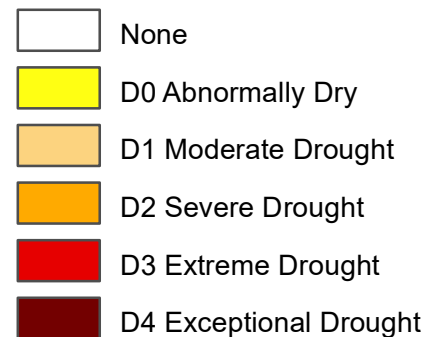
U.S. Drought Monitor

Lower Mississippi Watershed

November 17, 2015
(Released Thursday, Nov. 19, 2015)
Valid 7 a.m. EST



Intensity:



The Drought Monitor focuses on broad-scale conditions. Local conditions may vary. For more information on the Drought Monitor, go to <https://droughtmonitor.unl.edu/About.aspx>

Author:

Richard Heim
NCEI/NOAA



droughtmonitor.unl.edu