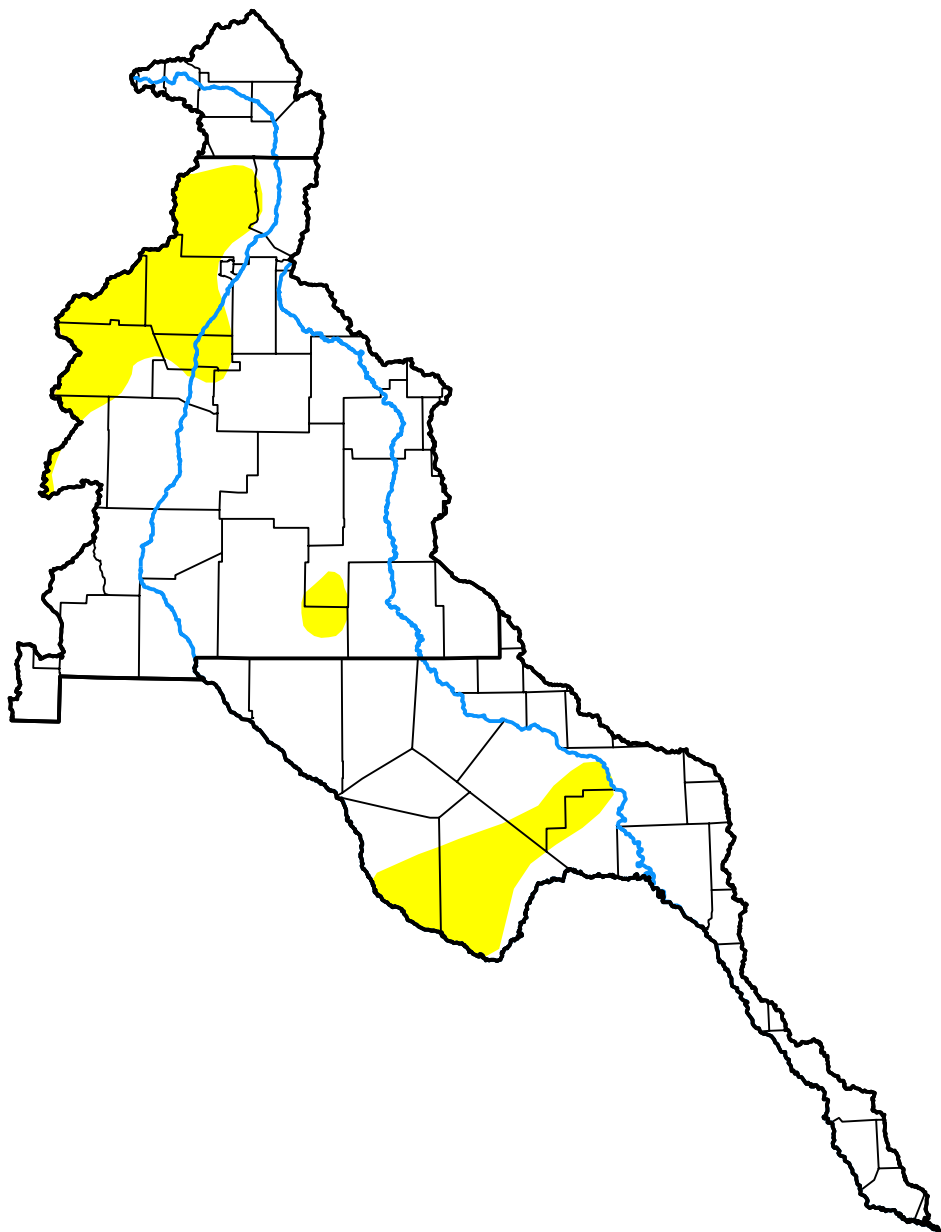


U.S. Drought Monitor

Rio Grande Watershed

November 17, 2015
 (Released Thursday, Nov. 19, 2015)

Valid 7 a.m. EST



Drought Conditions (Percent Area)

	None	D0	D1	D2	D3	D4
Current	83.73	16.24	0.03	0.00	0.00	0.00
Last Week <i>11-12-2015</i>	83.73	16.20	0.06	0.00	0.00	0.00
3 Months Ago <i>08-20-2015</i>	67.44	30.85	1.72	0.00	0.00	0.00
Start of Calendar Year <i>12-31-2014</i>	37.70	26.55	31.24	4.03	0.48	0.00
Start of Water Year <i>10-01-2015</i>	59.44	35.64	4.92	0.00	0.00	0.00
One Year Ago <i>11-20-2014</i>	40.70	25.89	29.78	3.63	0.00	0.00

Intensity:

- None
- D0 Abnormally Dry
- D1 Moderate Drought
- D2 Severe Drought
- D3 Extreme Drought
- D4 Exceptional Drought

The Drought Monitor focuses on broad-scale conditions. Local conditions may vary. For more information on the Drought Monitor, go to <https://droughtmonitor.unl.edu/About.aspx>

Author:

Richard Heim
 NCEI/NOAA



droughtmonitor.unl.edu