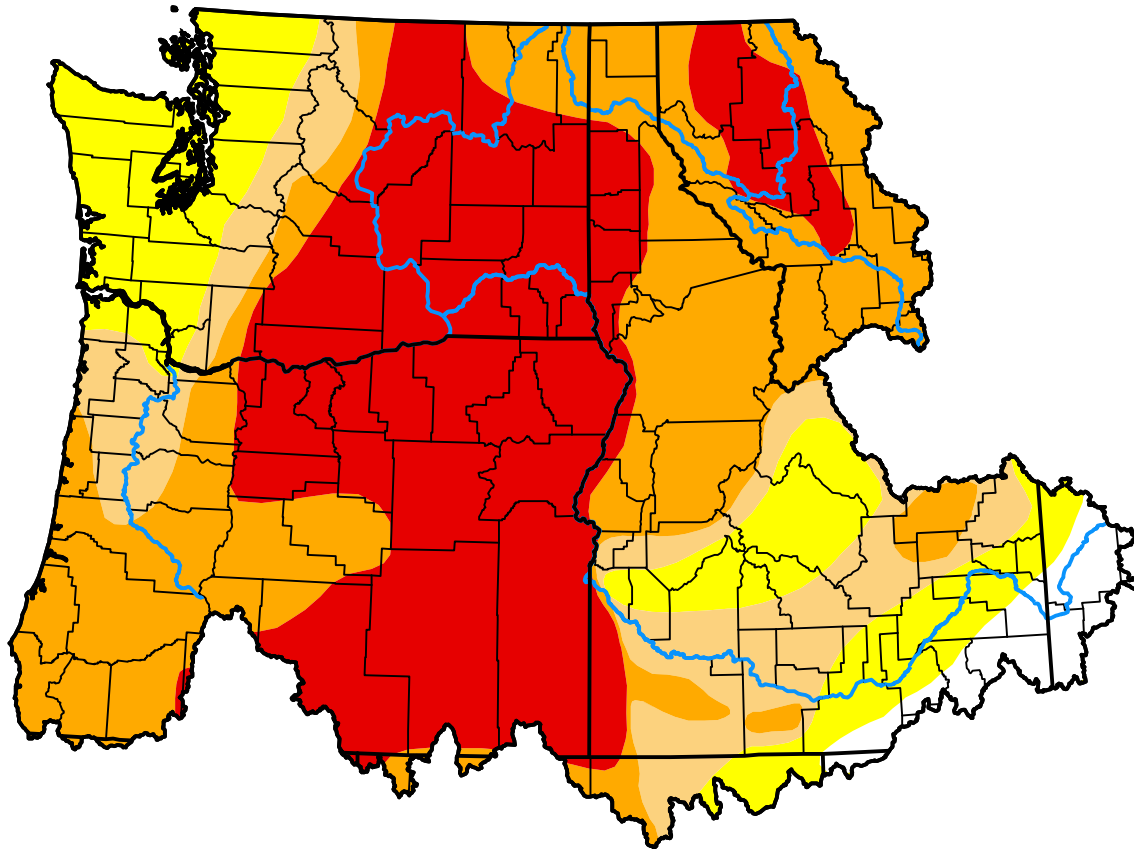


# U.S. Drought Monitor

## Pacific Northwest Watershed

**November 17, 2015**  
 (Released Thursday, Nov. 19, 2015)  
 Valid 7 a.m. EST



*Drought Conditions (Percent Area)*

	None	D0	D1	D2	D3	D4
<b>Current</b>	3.27	15.55	13.22	30.77	37.19	0.00
<b>Last Week</b> <i>11-12-2015</i>	3.27	8.10	19.34	32.10	37.19	0.00
<b>3 Months Ago</b> <i>08-20-2015</i>	0.03	5.60	12.36	37.92	44.09	0.00
<b>Start of Calendar Year</b> <i>12-31-2014</i>	34.96	15.14	24.90	13.87	11.14	0.00
<b>Start of Water Year</b> <i>10-01-2015</i>	0.03	5.88	12.17	26.69	55.22	0.00
<b>One Year Ago</b> <i>11-20-2014</i>	32.14	16.27	24.40	15.74	11.45	0.00

***Intensity:***

- None
- D0 Abnormally Dry
- D1 Moderate Drought
- D2 Severe Drought
- D3 Extreme Drought
- D4 Exceptional Drought

*The Drought Monitor focuses on broad-scale conditions. Local conditions may vary. For more information on the Drought Monitor, go to <https://droughtmonitor.unl.edu/About.aspx>*

***Author:***

Richard Heim  
 NCEI/NOAA



**droughtmonitor.unl.edu**