

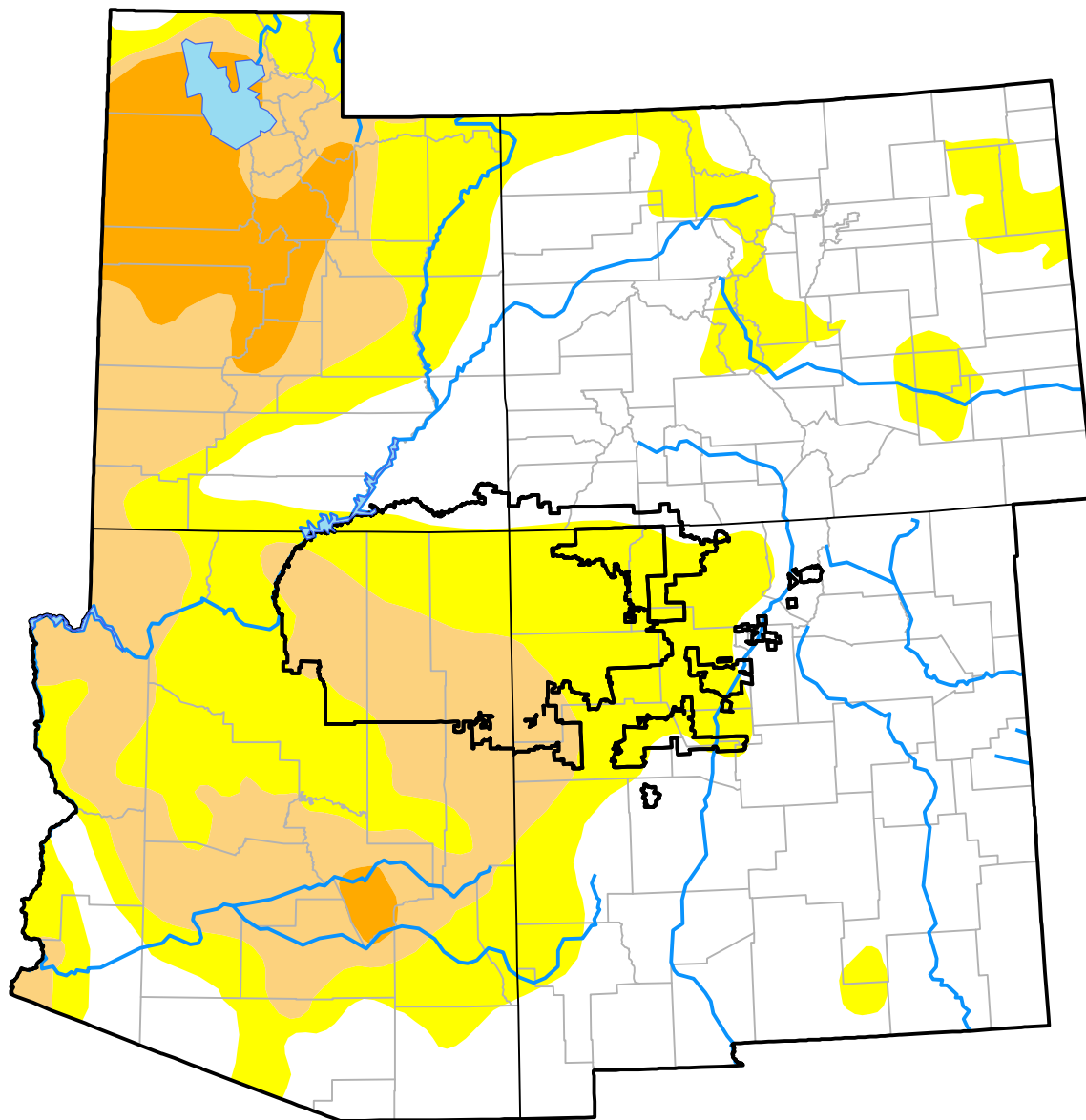
Corners RDEWS and Surrounding Areas

(Released Thursday, Nov. 19, 2015)

Valid 7 a.m. EST

Drought Conditions (Percent Area)

	None	D0-D4	D1-D4	D2-D4	D3-D4	D4
Current	49.47	50.53	23.32	5.57	0.00	0.00
Last Week <i>11-12-2015</i>	48.92	51.08	24.18	5.57	0.00	0.00
3 Months Ago <i>08-20-2015</i>	42.45	57.55	35.37	6.86	0.00	0.00
Start of Calendar Year <i>12-31-2014</i>	24.36	75.64	58.03	23.42	2.09	0.00
Start of Water Year <i>10-01-2015</i>	38.97	61.03	31.68	6.24	0.00	0.00
One Year Ago <i>11-20-2014</i>	25.90	74.10	57.72	23.05	1.45	0.00



Intensity:

- None
- D0 Abnormally Dry
- D1 Moderate Drought
- D2 Severe Drought
- D3 Extreme Drought
- D4 Exceptional Drought

The Drought Monitor focuses on broad-scale conditions. Local conditions may vary. For more information on the Drought Monitor, go to <https://droughtmonitor.unl.edu/About.aspx>

Author:

Richard Heim
NCEI/NOAA

