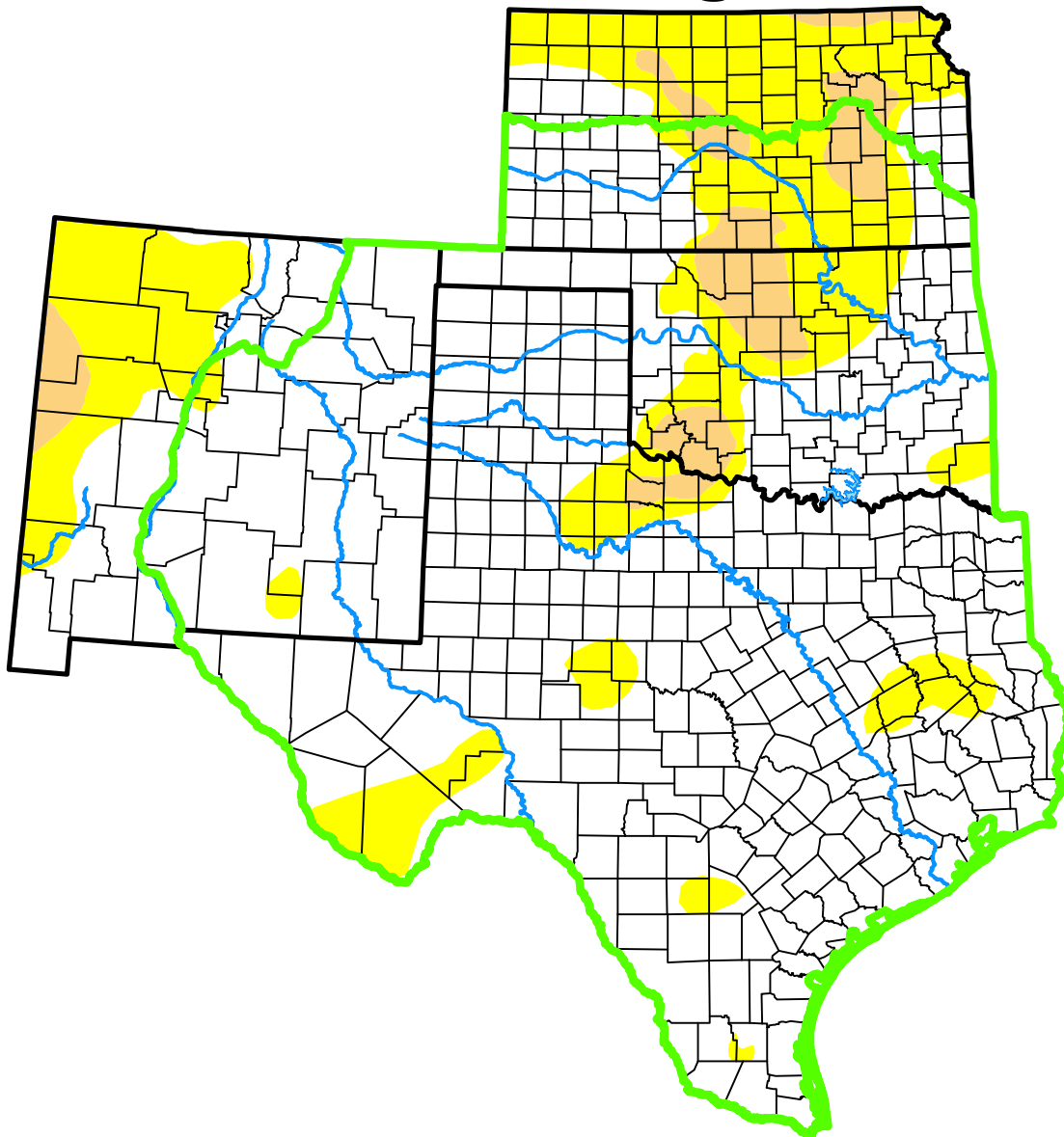


# U.S. Drought Monitor

## Southern Plains DEWS and Surrounding Areas

**November 17, 2015**  
 (Released Thursday, Nov. 19, 2015)  
 Valid 7 a.m. EST



*Drought Conditions (Percent Area)*

	None	D0-D4	D1-D4	D2-D4	D3-D4	D4
<b>Current</b>	82.95	17.05	4.15	0.00	0.00	0.00
<b>Last Week</b> <i>11-10-2015</i>	79.86	20.14	4.79	0.00	0.00	0.00
<b>3 Months Ago</b> <i>08-18-2015</i>	67.09	32.91	16.71	5.26	0.00	0.00
<b>Start of Calendar Year</b> <i>12-30-2014</i>	29.70	70.30	48.79	27.20	10.92	2.82
<b>Start of Water Year</b> <i>09-29-2015</i>	50.14	49.86	25.82	11.59	3.93	0.00
<b>One Year Ago</b> <i>11-18-2014</i>	27.99	72.01	48.58	26.73	9.76	3.12

(Statistics for area highlighted in green)

**Intensity:**

- None
- D0 Abnormally Dry
- D1 Moderate Drought
- D2 Severe Drought
- D3 Extreme Drought
- D4 Exceptional Drought

*The Drought Monitor focuses on broad-scale conditions. Local conditions may vary. For more information on the Drought Monitor, go to <https://droughtmonitor.unl.edu/About.aspx>*

**Author:**

Richard Heim  
 NCEI/NOAA

