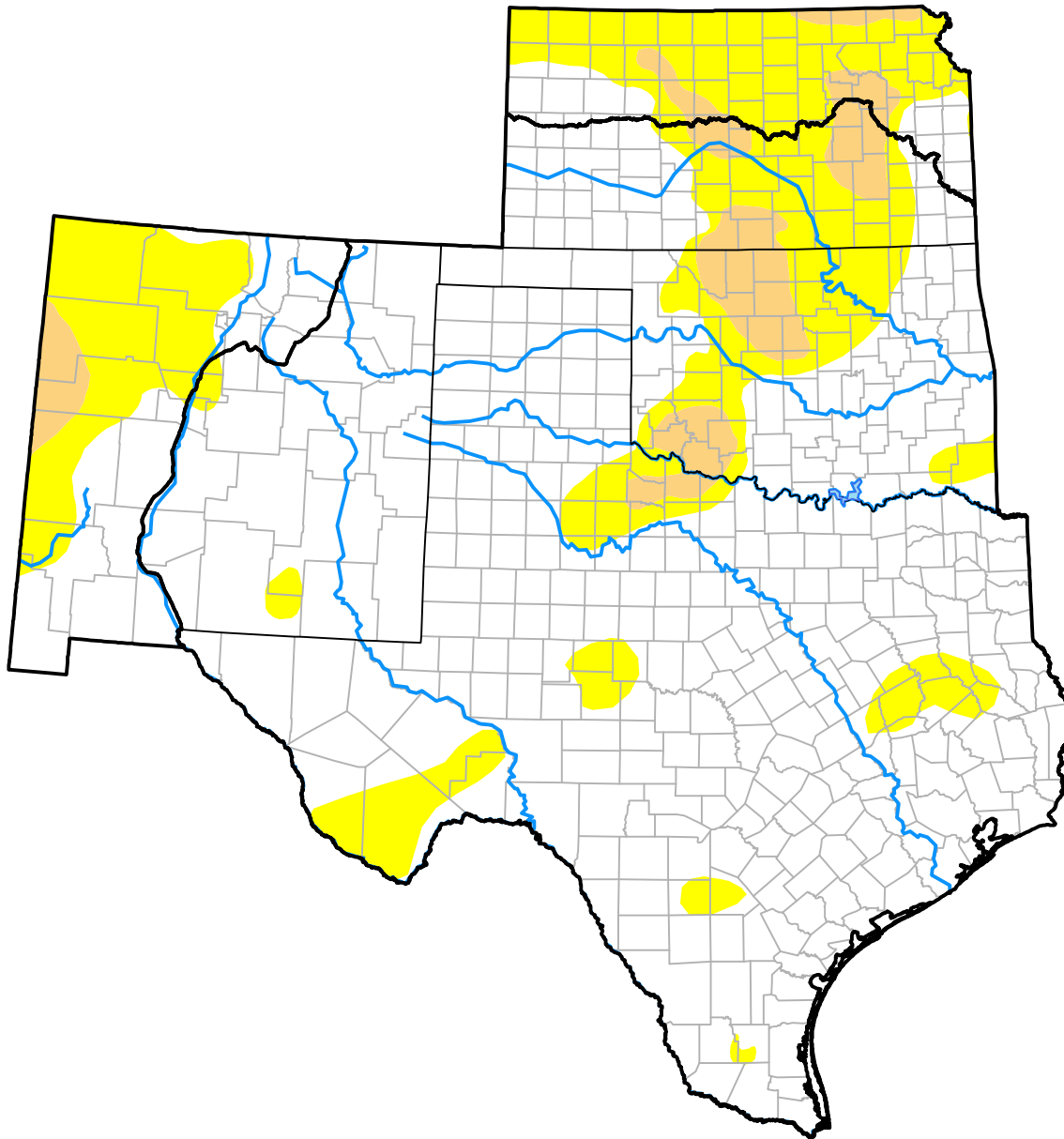


U.S. Drought Monitor

Southern Plains RDEWS

November 17, 2015
 (Released Thursday, Nov. 19, 2015)
 Valid 7 a.m. EST



Drought Conditions (Percent Area)

	None	D0-D4	D1-D4	D2-D4	D3-D4	D4
Current	81.62	18.38	3.27	0.00	0.00	0.00
Last Week <i>11-12-2015</i>	79.38	20.62	4.49	0.00	0.00	0.00
3 Months Ago <i>08-20-2015</i>	57.23	42.77	19.58	5.07	0.00	0.00
Start of Calendar Year <i>12-31-2014</i>	27.08	72.92	52.85	28.94	11.11	2.72
Start of Water Year <i>10-01-2015</i>	43.19	56.81	26.94	11.17	3.79	0.00
One Year Ago <i>11-20-2014</i>	25.44	74.56	52.01	28.49	9.41	3.01

Intensity:

- None
- D0 Abnormally Dry
- D1 Moderate Drought
- D2 Severe Drought
- D3 Extreme Drought
- D4 Exceptional Drought

The Drought Monitor focuses on broad-scale conditions. Local conditions may vary. For more information on the Drought Monitor, go to <https://droughtmonitor.unl.edu/About.aspx>

Author:

Richard Heim
 NCEI/NOAA

