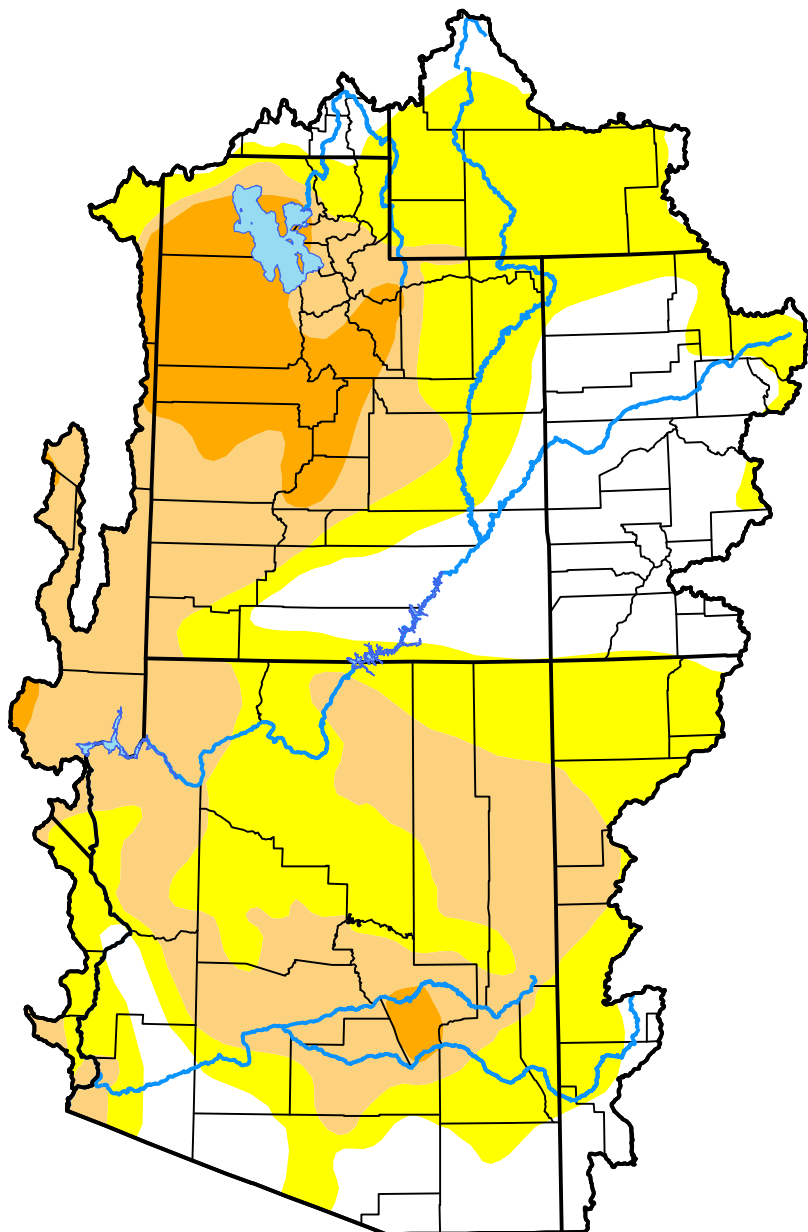


U.S. Drought Monitor

Colorado Basin RFC

November 17, 2015
 (Released Thursday, Nov. 19, 2015)

Valid 7 a.m. EST



Drought Conditions (Percent Area)

	None	D0	D1	D2	D3	D4
Current	24.74	37.81	29.14	8.31	0.00	0.00
Last Week <i>11-12-2015</i>	24.71	36.67	30.16	8.47	0.00	0.00
3 Months Ago <i>08-20-2015</i>	22.33	24.09	42.88	10.70	0.00	0.00
Start of Calendar Year <i>12-31-2014</i>	23.89	15.23	36.04	21.68	3.17	0.00
Start of Water Year <i>10-01-2015</i>	24.00	27.53	38.63	9.85	0.00	0.00
One Year Ago <i>11-20-2014</i>	23.91	13.91	37.34	22.57	2.27	0.00

Intensity:

- None
- D0 Abnormally Dry
- D1 Moderate Drought
- D2 Severe Drought
- D3 Extreme Drought
- D4 Exceptional Drought

The Drought Monitor focuses on broad-scale conditions. Local conditions may vary. For more information on the Drought Monitor, go to <https://droughtmonitor.unl.edu/About.aspx>

Author:

Richard Heim
 NCEI/NOAA

