

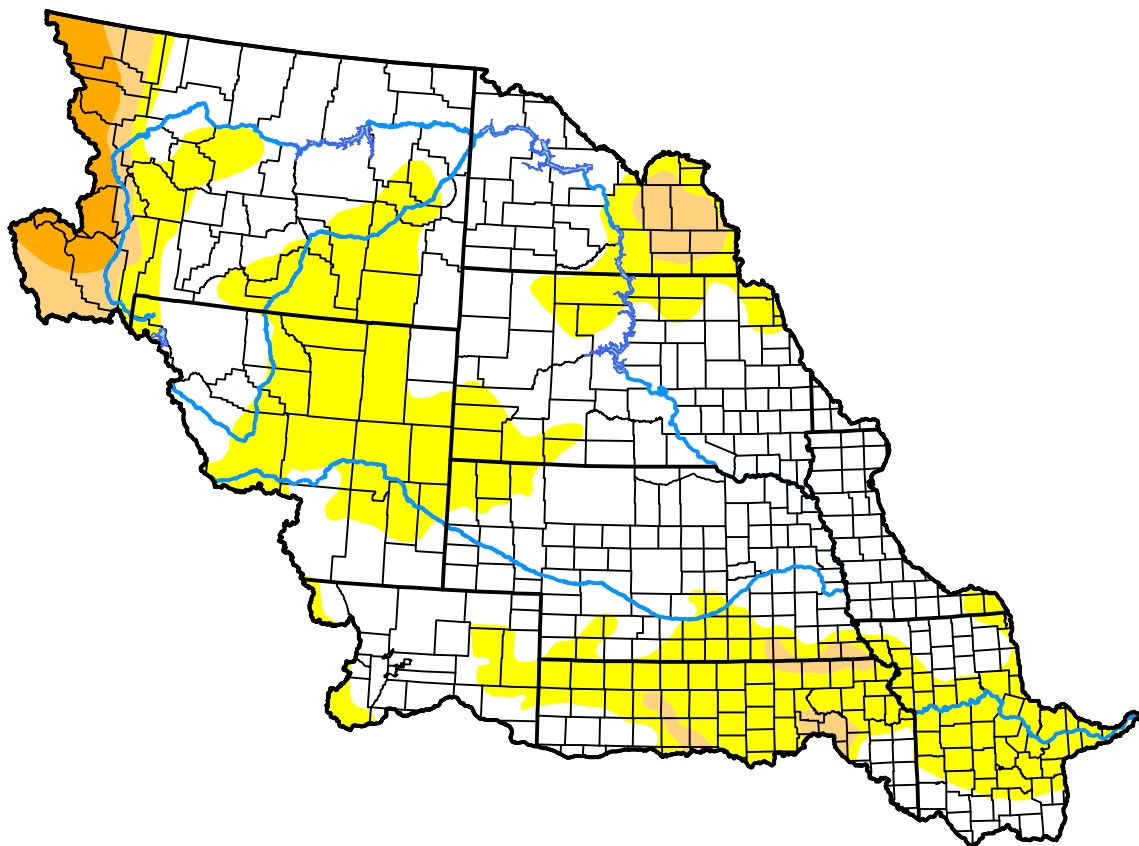
U.S. Drought Monitor

Missouri Basin RFC

November 17, 2015
 (Released Thursday, Nov. 19, 2015)
 Valid 7 a.m. EST

Drought Conditions (Percent Area)

	None	D0-D4	D1-D4	D2-D4	D3-D4	D4
Current	59.05	40.95	7.30	2.59	0.00	0.00
Last Week <i>11-12-2015</i>	58.71	41.29	11.03	2.60	0.00	0.00
3 Months Ago <i>08-20-2015</i>	84.15	15.85	5.37	1.91	0.11	0.00
Start of Calendar Year <i>12-31-2014</i>	77.56	22.44	2.00	0.72	0.00	0.00
Start of Water Year <i>10-01-2015</i>	65.65	34.35	6.75	3.42	0.66	0.00
One Year Ago <i>11-20-2014</i>	88.40	11.60	1.89	0.89	0.00	0.00



Intensity:

- None
- D0 Abnormally Dry
- D1 Moderate Drought
- D2 Severe Drought
- D3 Extreme Drought
- D4 Exceptional Drought

The Drought Monitor focuses on broad-scale conditions. Local conditions may vary. For more information on the Drought Monitor, go to <https://droughtmonitor.unl.edu/About.aspx>

Author:

Richard Heim
 NCEI/NOAA

