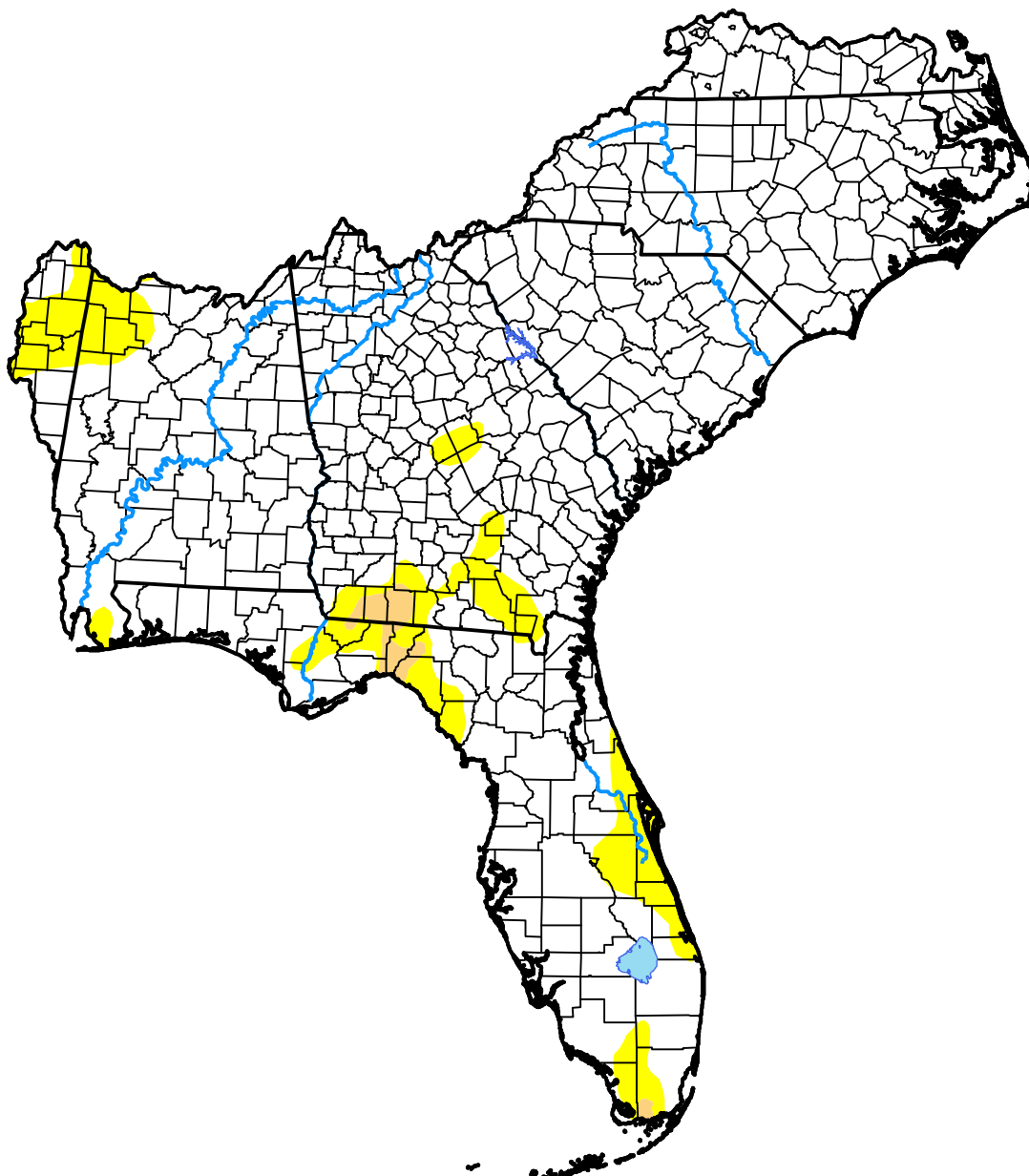


U.S. Drought Monitor Southeast RFC

November 17, 2015
(Released Thursday, Nov. 19, 2015)

Valid 7 a.m. EST



Drought Conditions (Percent Area)

	None	D0	D1	D2	D3	D4
Current	90.22	8.92	0.86	0.00	0.00	0.00
Last Week <i>11-12-2015</i>	90.48	8.71	0.81	0.00	0.00	0.00
3 Months Ago <i>08-20-2015</i>	41.40	31.60	20.10	6.12	0.78	0.00
Start of Calendar Year <i>12-31-2014</i>	84.78	14.38	0.84	0.00	0.00	0.00
Start of Water Year <i>10-01-2015</i>	53.12	33.79	11.08	2.01	0.00	0.00
One Year Ago <i>11-20-2014</i>	43.07	49.68	6.76	0.49	0.00	0.00

Intensity:



The Drought Monitor focuses on broad-scale conditions. Local conditions may vary. For more information on the Drought Monitor, go to <https://droughtmonitor.unl.edu/About.aspx>

Author:

Richard Heim
NCEI/NOAA

