

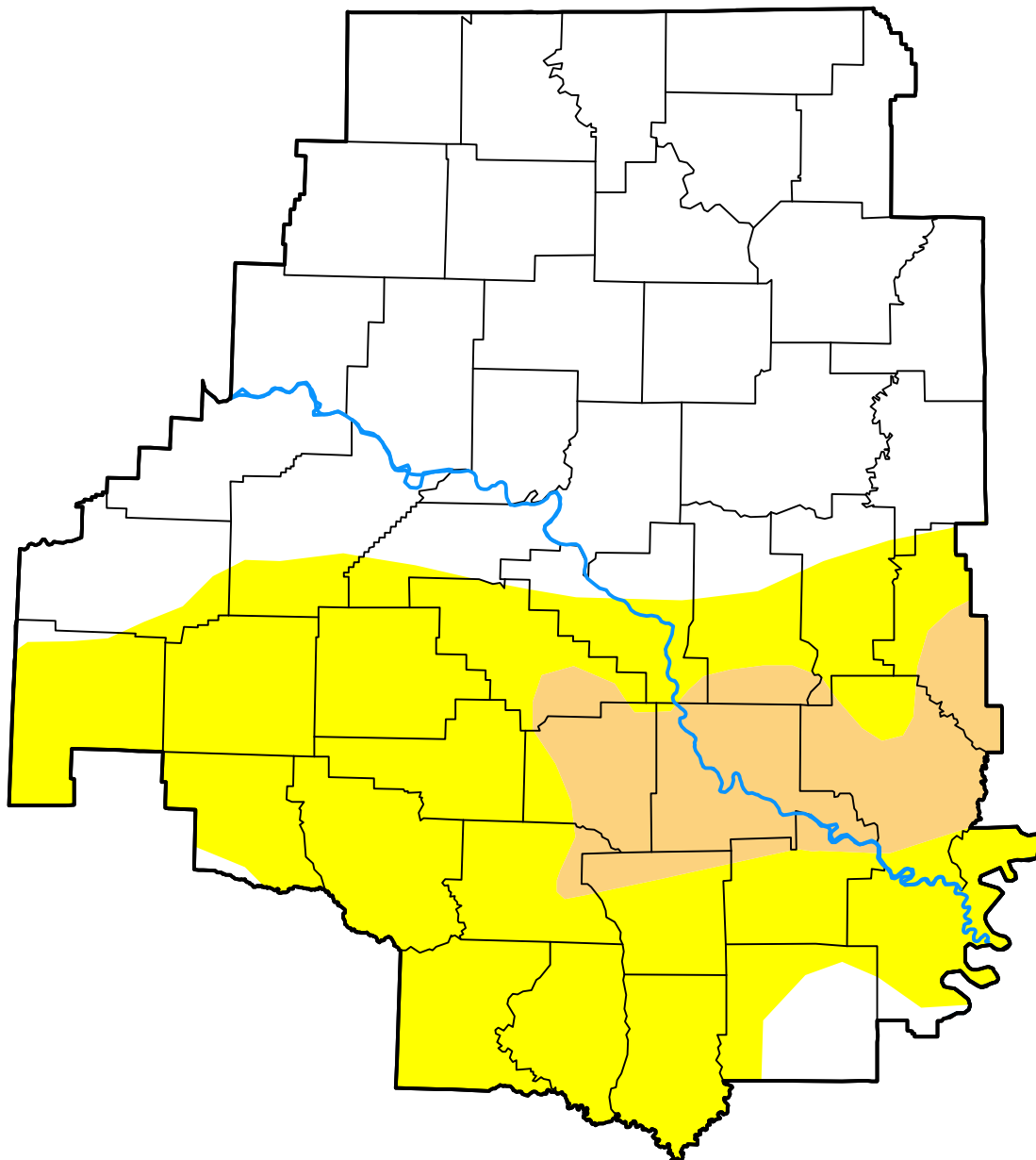
U.S. Drought Monitor

Little Rock, AR WFO

November 17, 2015
 (Released Thursday, Nov. 19, 2015)
 Valid 7 a.m. EST

Drought Conditions (Percent Area)

	None	D0	D1	D2	D3	D4
Current	52.81	37.41	9.78	0.00	0.00	0.00
Last Week <i>11-12-2015</i>	21.28	64.04	14.68	0.00	0.00	0.00
3 Months Ago <i>08-20-2015</i>	51.21	48.74	0.05	0.00	0.00	0.00
Start of Calendar Year <i>12-31-2014</i>	33.05	50.72	16.24	0.00	0.00	0.00
Start of Water Year <i>10-01-2015</i>	32.26	22.94	36.26	8.43	0.12	0.00
One Year Ago <i>11-20-2014</i>	42.27	44.89	12.84	0.00	0.00	0.00



Intensity:

- None
- D0 Abnormally Dry
- D1 Moderate Drought
- D2 Severe Drought
- D3 Extreme Drought
- D4 Exceptional Drought

The Drought Monitor focuses on broad-scale conditions. Local conditions may vary. For more information on the Drought Monitor, go to <https://droughtmonitor.unl.edu/About.aspx>

Author:

Richard Heim
 NCEI/NOAA

