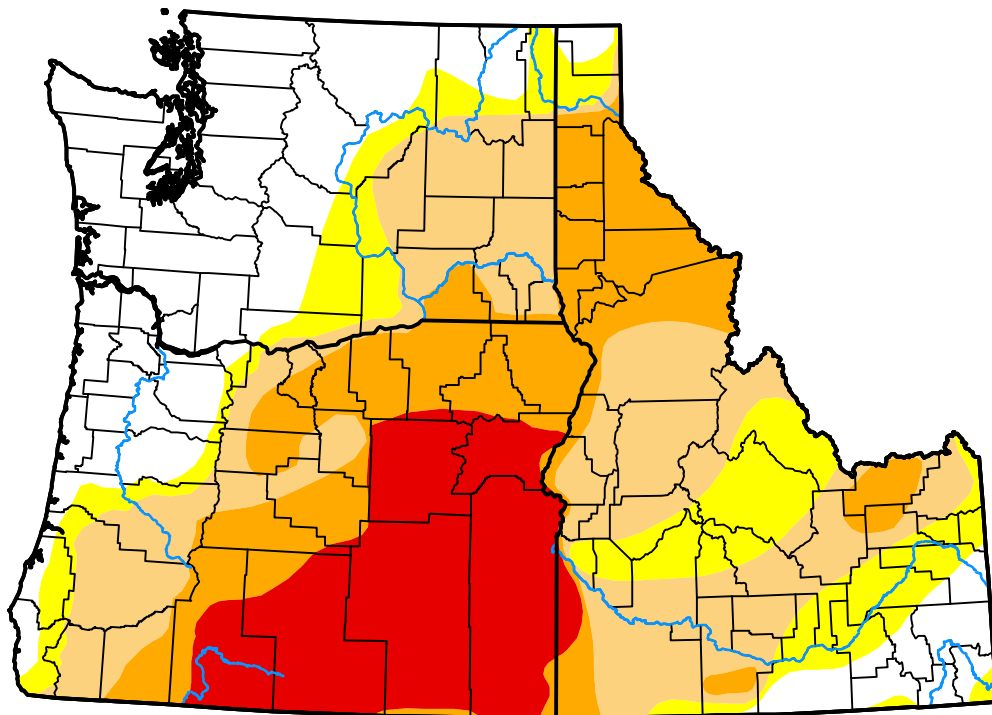


U.S. Drought Monitor

USDA Northwest Climate Hub

December 29, 2015
 (Released Thursday, Dec. 31, 2015)
 Valid 7 a.m. EST



Drought Conditions (Percent Area)

	None	D0	D1	D2	D3	D4
Current	70.69	11.39	7.62	5.56	4.73	0.00
Last Week <i>12-24-2015</i>	68.97	11.28	6.07	7.82	5.85	0.00
3 Months Ago <i>10-01-2015</i>	40.30	28.78	6.34	8.26	16.32	0.00
Start of Calendar Year <i>12-31-2014</i>	78.34	5.11	7.74	4.49	4.32	0.00
Start of Water Year <i>10-01-2015</i>	40.30	28.78	6.34	8.26	16.32	0.00
One Year Ago <i>12-31-2014</i>	78.34	5.11	7.74	4.49	4.32	0.00

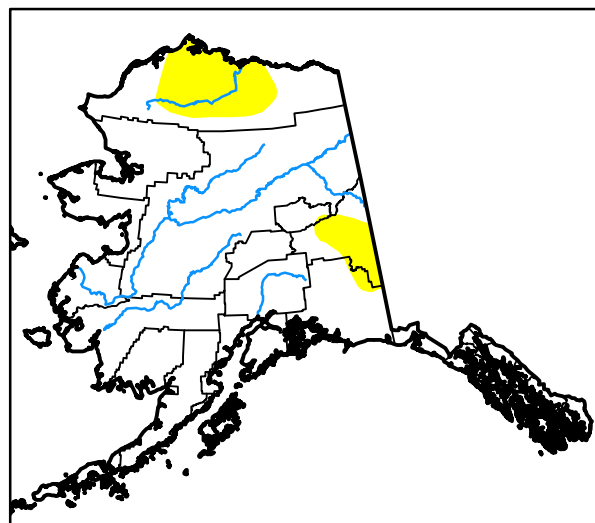
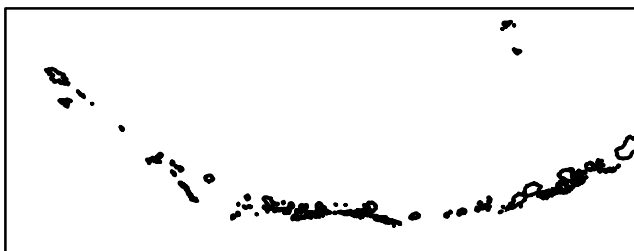
Intensity:



The Drought Monitor focuses on broad-scale conditions. Local conditions may vary. For more information on the Drought Monitor, go to <https://droughtmonitor.unl.edu/About.aspx>

Author:

Chris Fenimore
 NCEI/NESDIS/NOAA



droughtmonitor.unl.edu