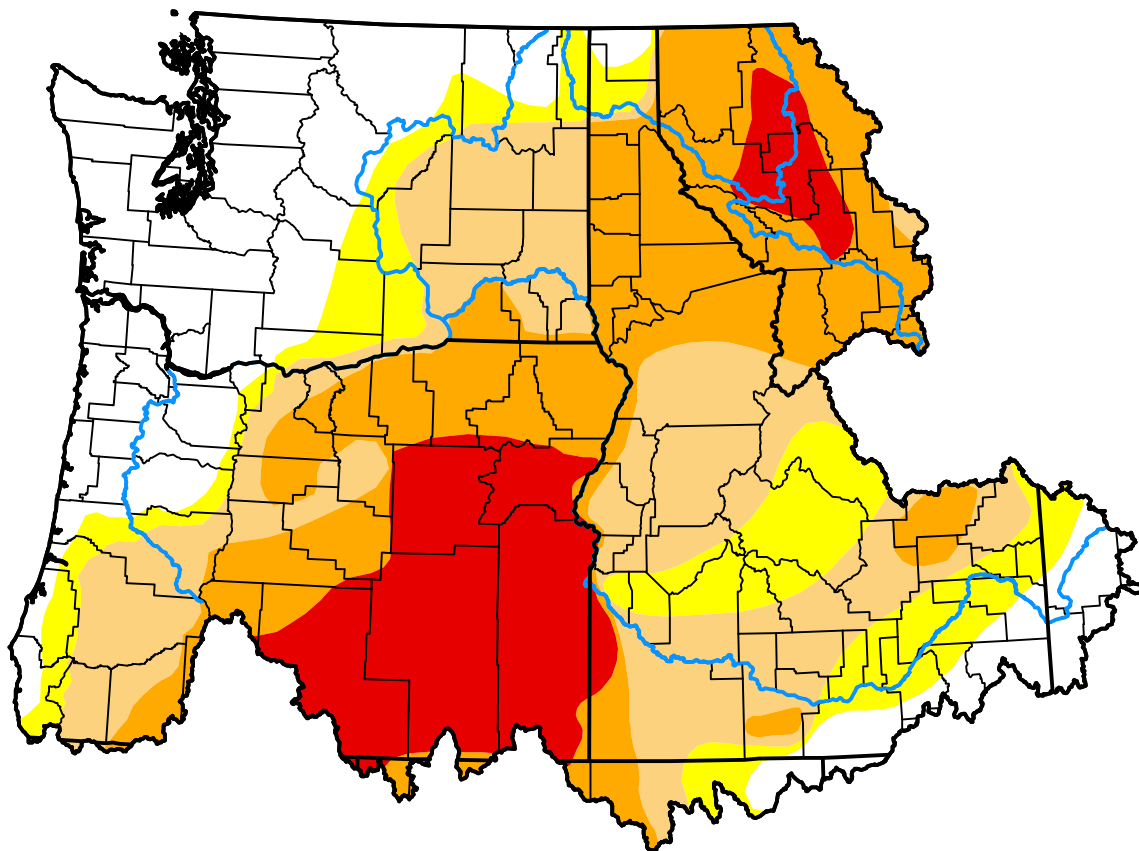


# U.S. Drought Monitor

## Pacific Northwest Watershed

**December 29, 2015**  
 (Released Thursday, Dec. 31, 2015)  
 Valid 7 a.m. EST



*Drought Conditions (Percent Area)*

|  | None  | D0    | D1    | D2    | D3    | D4   |
|--|-------|-------|-------|-------|-------|------|
| <b>Current</b>                                     | 24.34 | 13.47 | 23.85 | 24.04 | 14.30 | 0.00 |
| <b>Last Week</b><br><i>12-24-2015</i>              | 19.14 | 13.15 | 19.13 | 31.13 | 17.45 | 0.00 |
| <b>3 Months Ago</b><br><i>10-01-2015</i>           | 0.03  | 5.88  | 12.17 | 26.69 | 55.22 | 0.00 |
| <b>Start of Calendar Year</b><br><i>12-31-2014</i> | 34.96 | 15.14 | 24.90 | 13.87 | 11.14 | 0.00 |
| <b>Start of Water Year</b><br><i>10-01-2015</i>    | 0.03  | 5.88  | 12.17 | 26.69 | 55.22 | 0.00 |
| <b>One Year Ago</b><br><i>12-31-2014</i>           | 34.96 | 15.14 | 24.90 | 13.87 | 11.14 | 0.00 |

***Intensity:***

- None
- D0 Abnormally Dry
- D1 Moderate Drought
- D2 Severe Drought
- D3 Extreme Drought
- D4 Exceptional Drought

*The Drought Monitor focuses on broad-scale conditions. Local conditions may vary. For more information on the Drought Monitor, go to <https://droughtmonitor.unl.edu/About.aspx>*

***Author:***

Chris Fenimore  
 NCEI/NESDIS/NOAA

