

# U.S. Drought Monitor

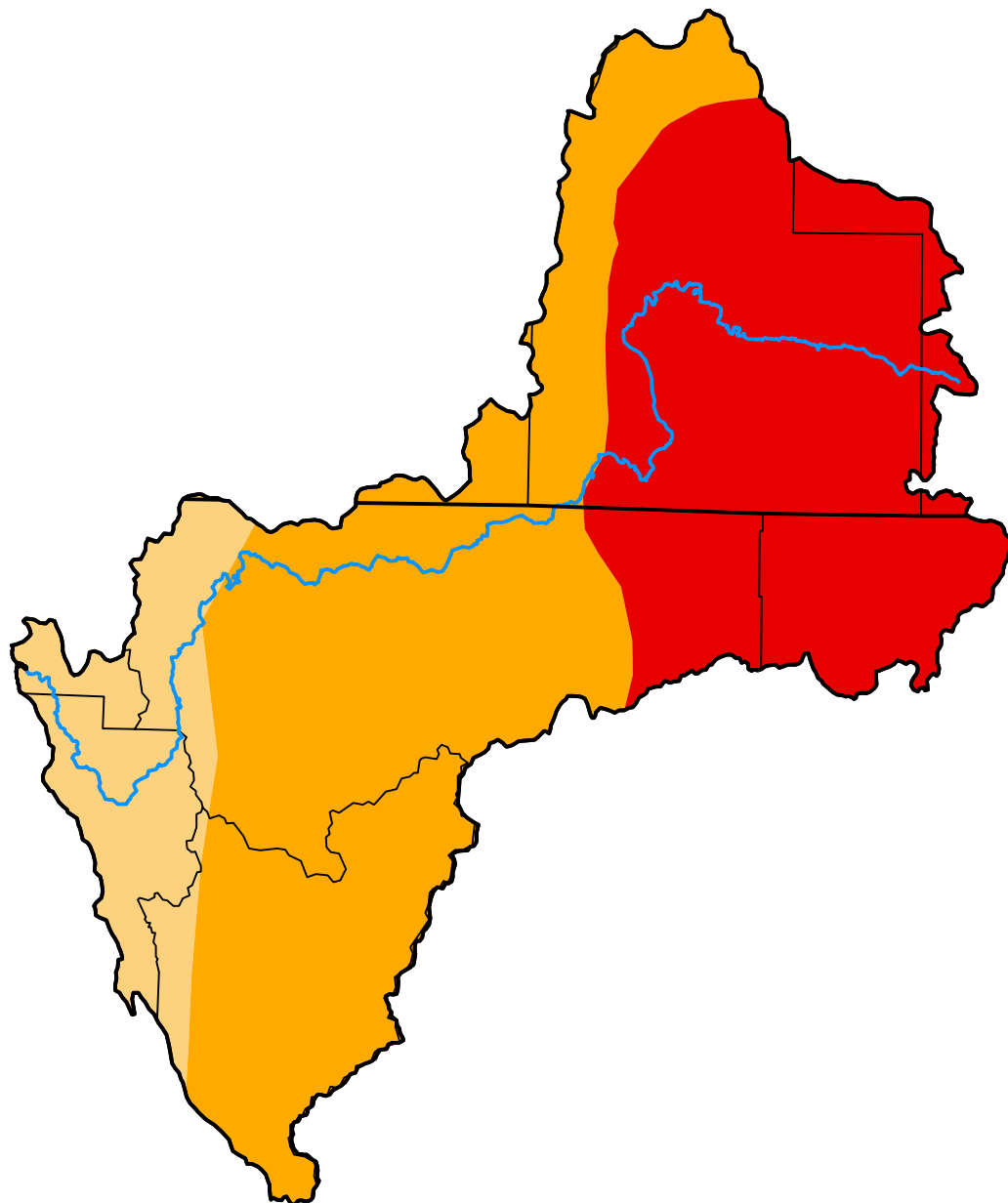
## Klamath River Basin

**December 29, 2015**  
 (Released Thursday, Dec. 31, 2015)

Valid 7 a.m. EST

*Drought Conditions (Percent Area)*

	None	D0	D1	D2	D3	D4
<b>Current</b>	0.00	0.00	13.00	48.21	38.79	0.00
<b>Last Week</b> <i>12-22-2015</i>	0.00	0.00	7.03	49.52	43.45	0.00
<b>3 Months Ago</b> <i>09-29-2015</i>	0.00	0.00	0.00	56.55	43.45	0.00
<b>Start of Calendar Year</b> <i>12-30-2014</i>	0.00	1.00	4.26	25.75	68.99	0.00
<b>Start of Water Year</b> <i>09-29-2015</i>	0.00	0.00	0.00	56.55	43.45	0.00
<b>One Year Ago</b> <i>12-30-2014</i>	0.00	1.00	4.26	25.75	68.99	0.00



***Intensity:***

- None
- D0 Abnormally Dry
- D1 Moderate Drought
- D2 Severe Drought
- D3 Extreme Drought
- D4 Exceptional Drought

*The Drought Monitor focuses on broad-scale conditions. Local conditions may vary. For more information on the Drought Monitor, go to <https://droughtmonitor.unl.edu/About.aspx>*

***Author:***

Chris Fenimore  
 NCEI/NESDIS/NOAA



**droughtmonitor.unl.edu**