

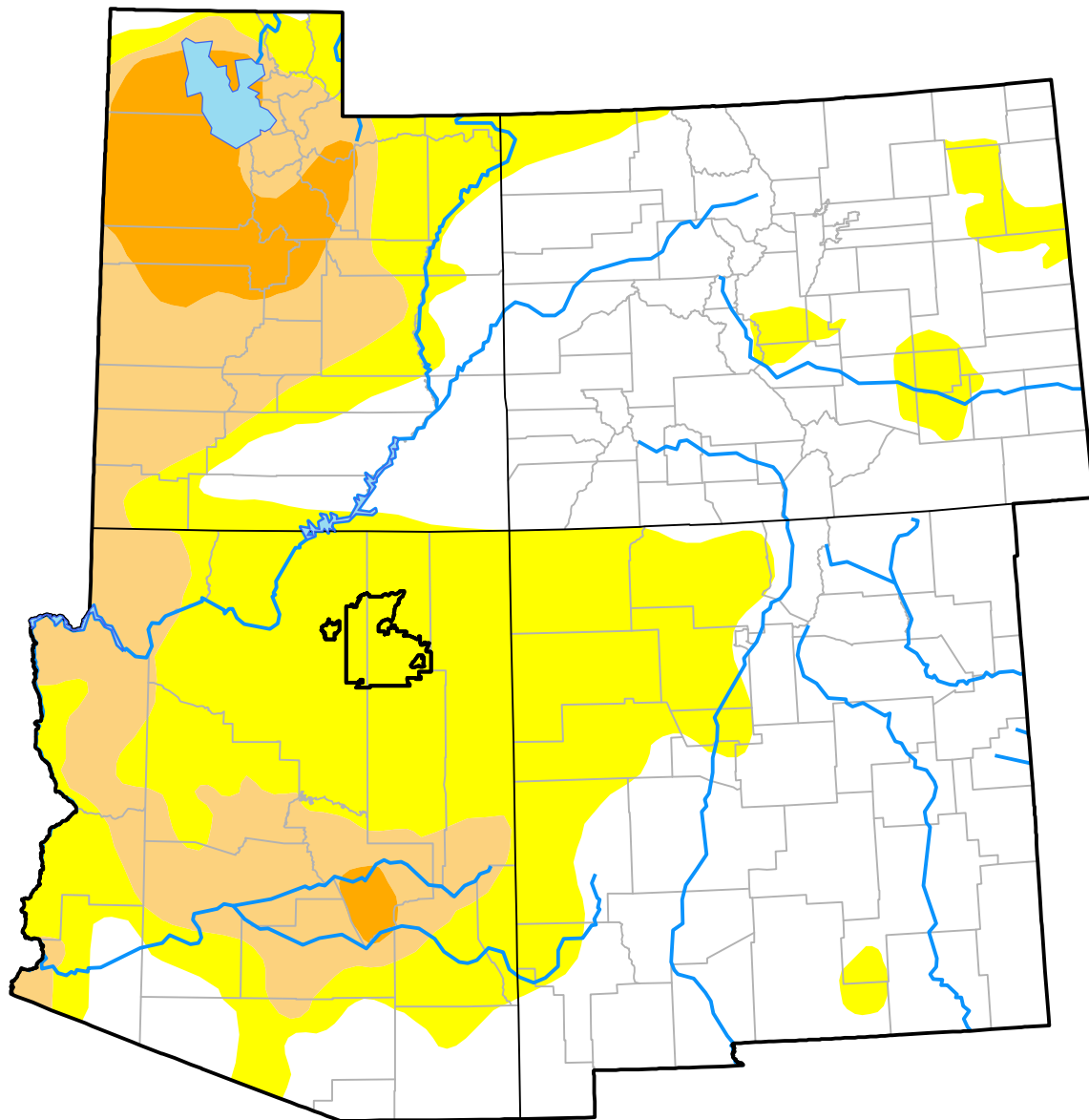
Opportunity RDEWS and Surrounding Areas

(Released Thursday, Dec. 31, 2015)

Valid 7 a.m. EST

Drought Conditions (Percent Area)

	None	D0	D1	D2	D3	D4
Current	51.56	29.75	13.88	4.81	0.00	0.00
Last Week <i>12-24-2015</i>	51.08	30.23	13.88	4.81	0.00	0.00
3 Months Ago <i>10-01-2015</i>	38.97	29.35	25.44	6.24	0.00	0.00
Start of Calendar Year <i>12-31-2014</i>	24.36	17.62	34.60	21.33	2.09	0.00
Start of Water Year <i>10-01-2015</i>	38.97	29.35	25.44	6.24	0.00	0.00
One Year Ago <i>12-31-2014</i>	24.36	17.62	34.60	21.33	2.09	0.00



Intensity:

- None
- D0 Abnormally Dry
- D1 Moderate Drought
- D2 Severe Drought
- D3 Extreme Drought
- D4 Exceptional Drought

The Drought Monitor focuses on broad-scale conditions. Local conditions may vary. For more information on the Drought Monitor, go to <https://droughtmonitor.unl.edu/About.aspx>

Author:

Chris Fenimore
NCEI/NESDIS/NOAA

