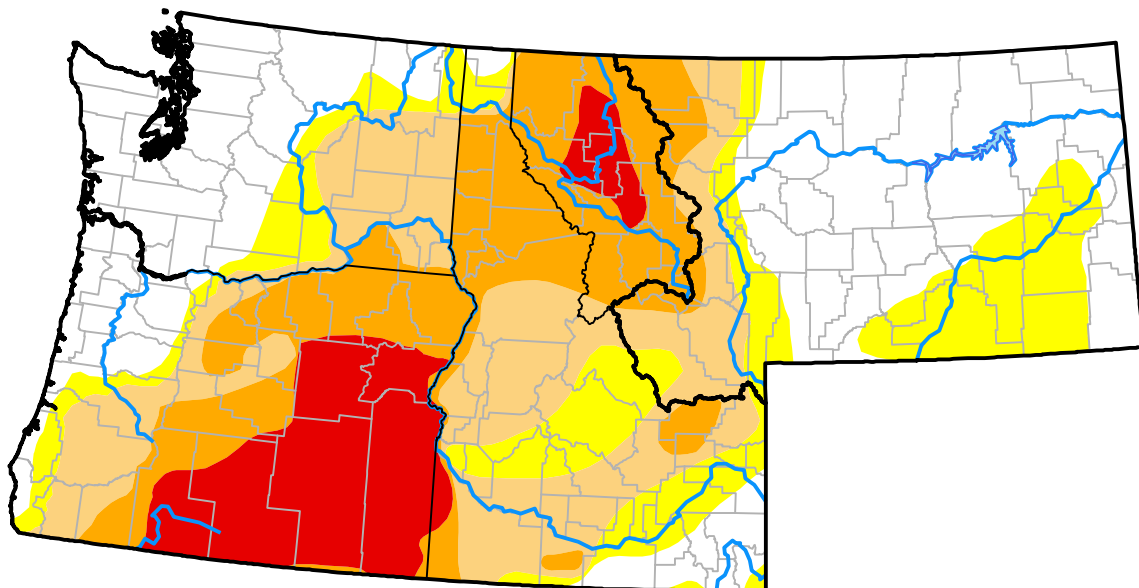


Northwest RDEWS and Surrounding Areas

Drought Conditions (Percent Area)

	None	D0	D1	D2	D3	D4
Current	34.29	16.53	19.74	18.17	11.27	0.00
Last Week <i>12-24-2015</i>	30.68	16.30	16.48	22.92	13.63	0.00
3 Months Ago <i>10-01-2015</i>	11.37	14.69	11.55	21.78	40.61	0.00
Start of Calendar Year <i>12-31-2014</i>	54.03	11.17	16.26	9.45	9.09	0.00
Start of Water Year <i>10-01-2015</i>	11.37	14.69	11.55	21.78	40.61	0.00
One Year Ago <i>12-31-2014</i>	54.03	11.17	16.26	9.45	9.09	0.00



Intensity:



The Drought Monitor focuses on broad-scale conditions. Local conditions may vary. For more information on the Drought Monitor, go to <https://droughtmonitor.unl.edu/About.aspx>

Author:

Chris Fenimore
NCEI/NESDIS/NOAA

